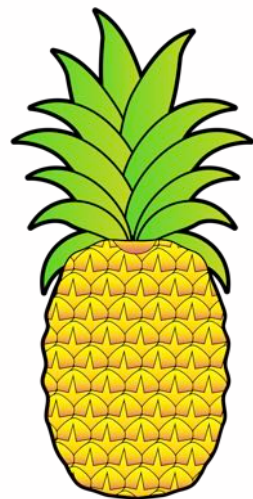




# RODEA LA TERMINACIÓN CORRECTA

TRABAJAMOS LAS HABILIDADES FONOLÓGICAS

María Olivares para Orientación Andújar

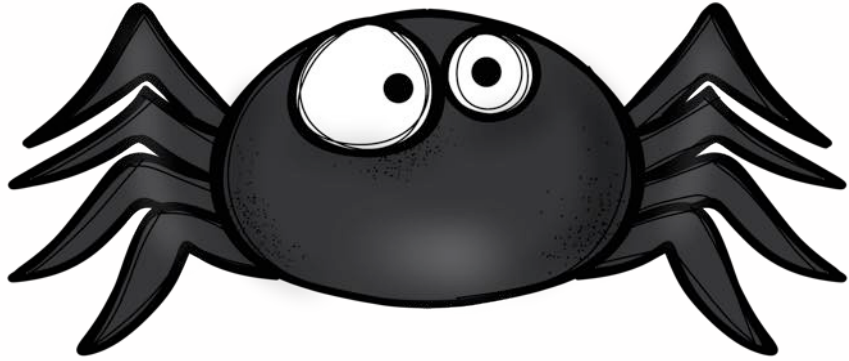


- ina



- oña

- iña



- ena

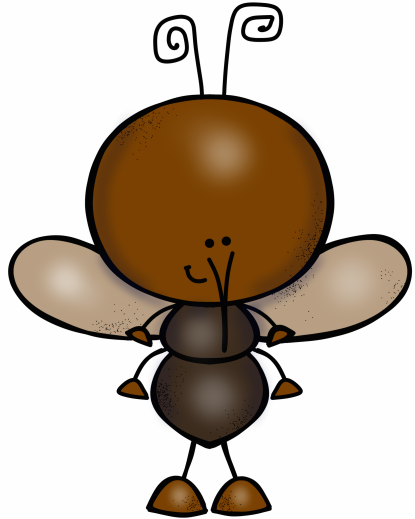


- aña

- iña

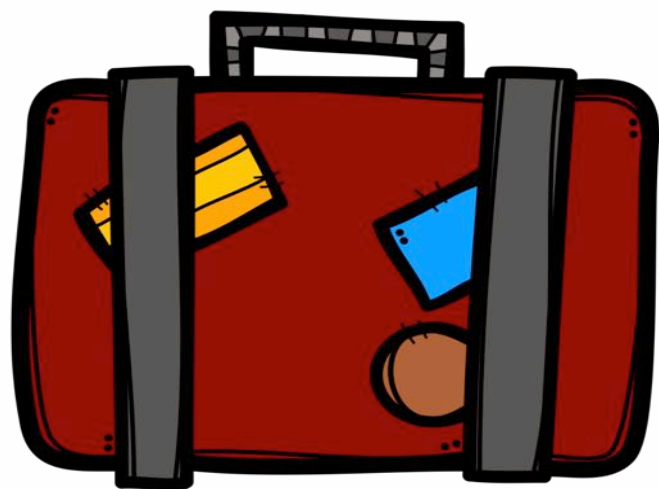


- eto



- ito

- ato

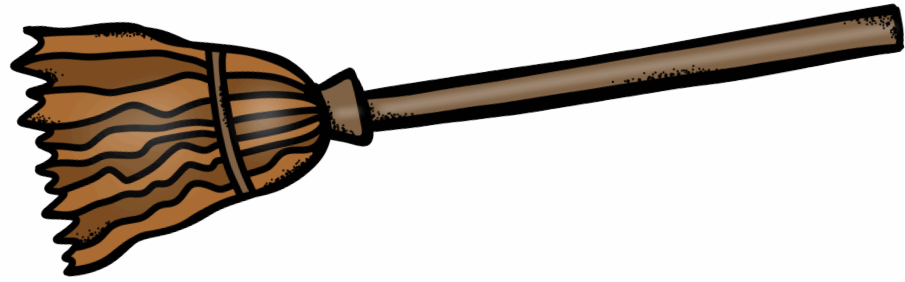


- eta

- ito

- ato



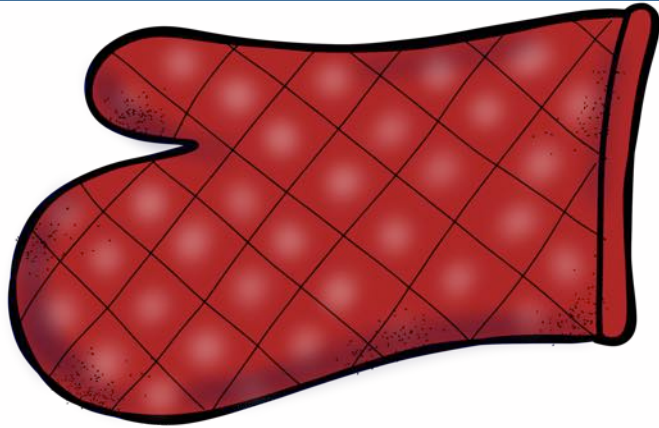


**- illo**

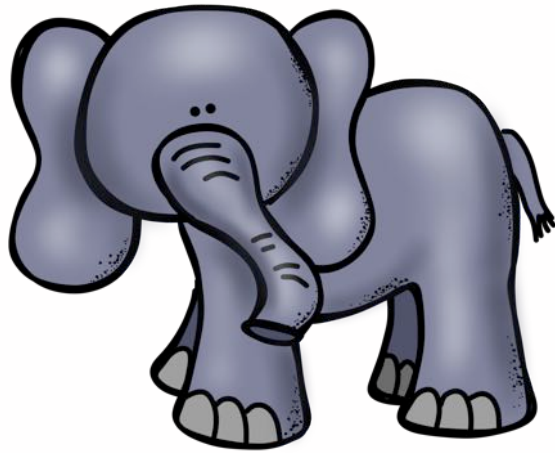


**- eba**

**- oba**

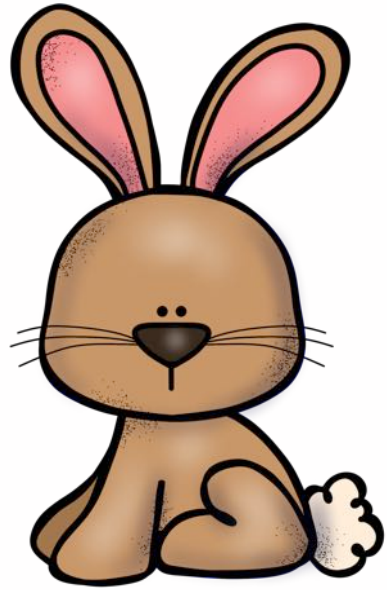


**- ento**



**- anto**

**- ante**



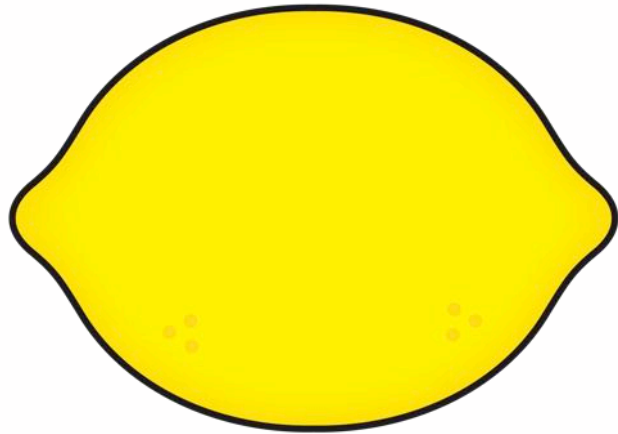
- ajo

- ejo



- ojo





- ón

- in

- an



- ón

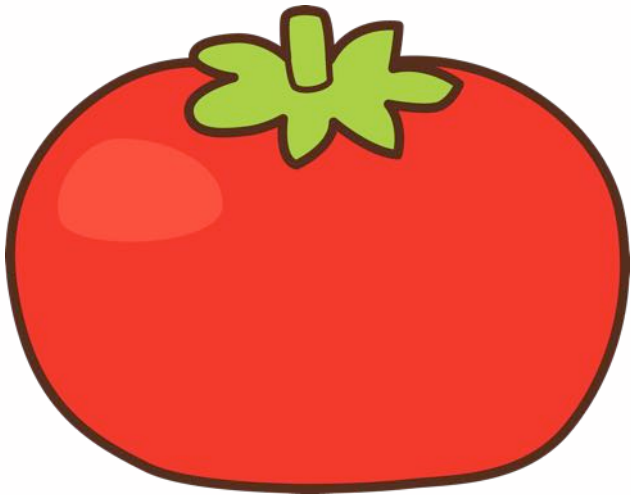
- arco



- erco



**- ate**



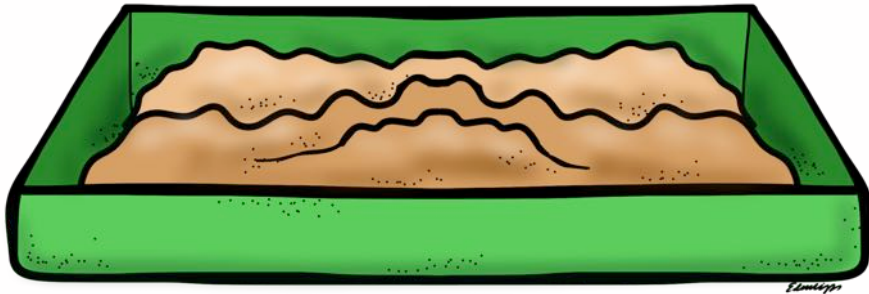
**- eto**

**- ito**



- ena

- ano



- ona



**- ando**



**- endo**

**- anda**



**- imo**



**- una**

**- ino**



- el

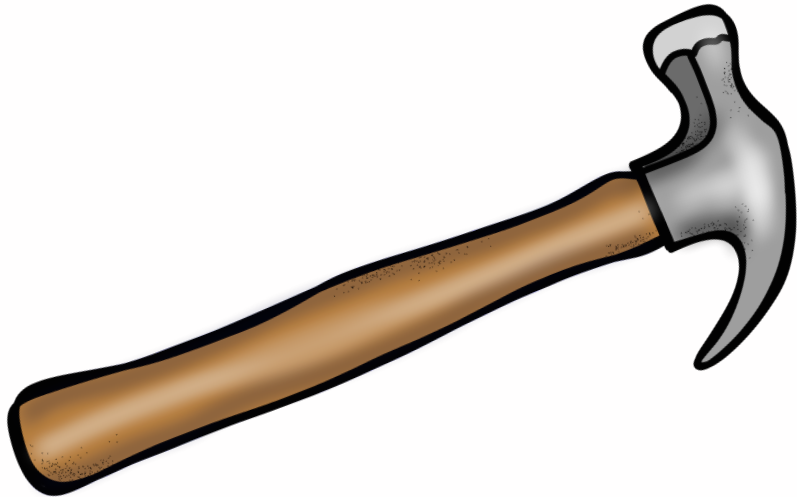
- al

- ol





**- illo**



**- allo**

**- iyo**