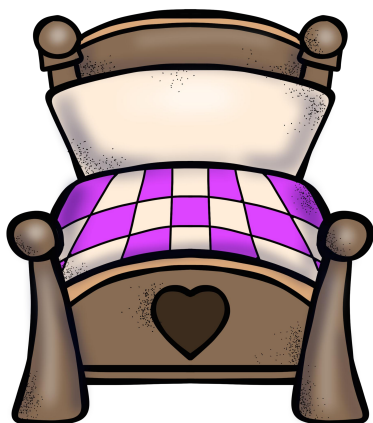




# CONCIENCIA FONOLÓGICA:

## **Elige la sílaba correcta**

ca-ma

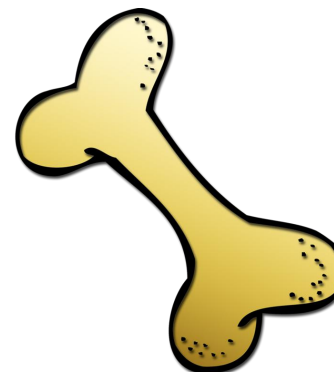


ma

na

ra

\_\_so



gue

hue

bue

mu\_\_ca



nie

ne

ñe

pi\_\_ta



ra

rra

sa

\_\_rro

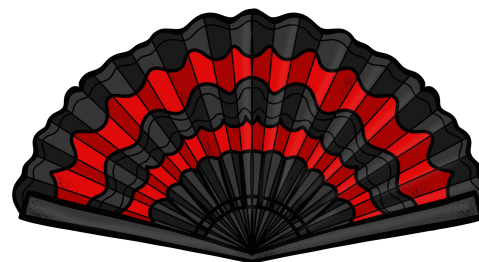


so

co

zo

abani\_\_

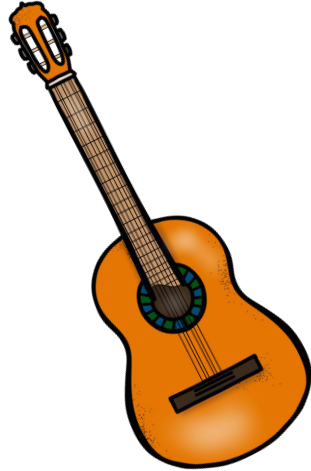


ko

co

to

guita\_\_

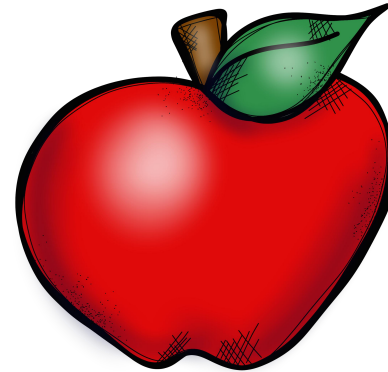


ra

za

rra

man\_\_na

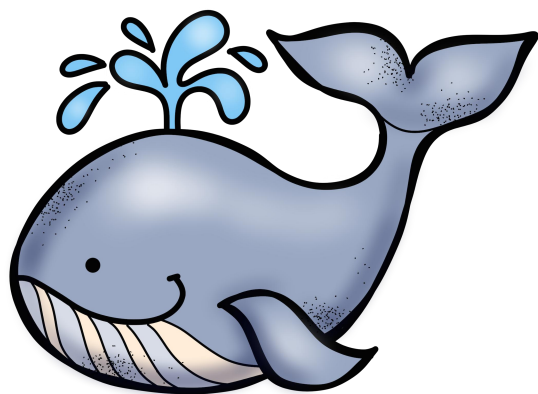


za

sa

ca

ba\_\_na



lle

yie

ye

a\_\_la

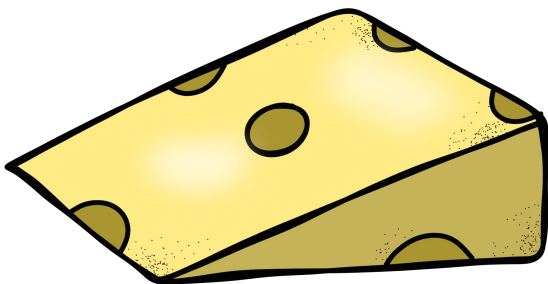


hue

gue

bue

\_\_so

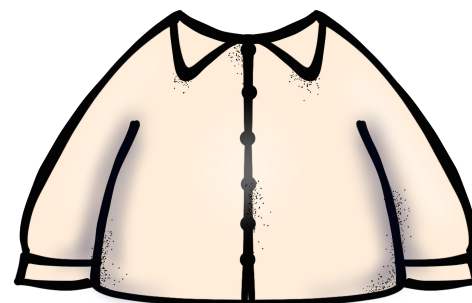


ke

que

ce

cami\_\_



sa

za

ta

\_\_pana

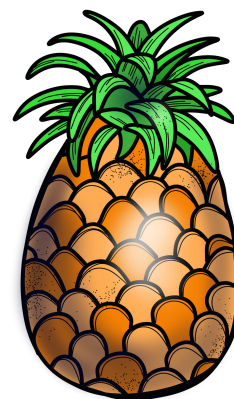


can

kam

cam

pi\_\_

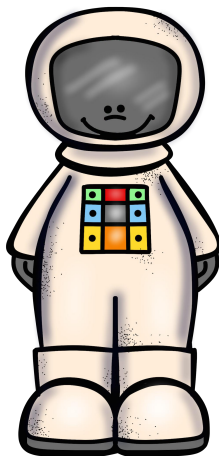


nia

ña

na

as\_\_nauta



bro

tro

to

calaba\_\_

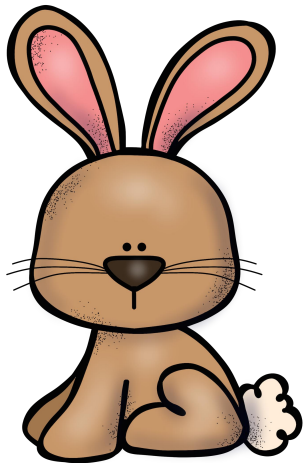


za

sa

ta

co\_\_jo

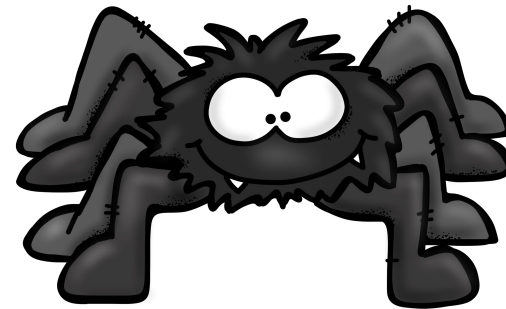


ñe

me

ne

a\_\_ña

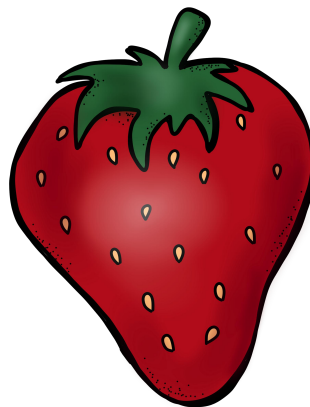


rra

ra

na

fre\_\_

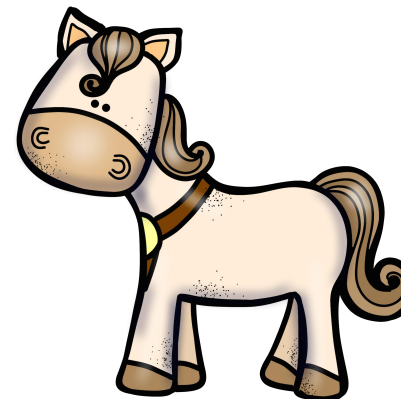


sa

za

ca

ca\_\_llo

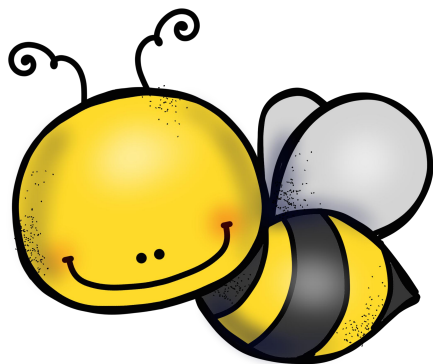


ta

ha

ba

abe\_\_



ta

ja

ga

paya\_\_

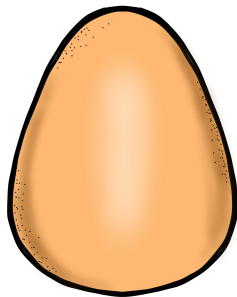


so

zo

xo

\_\_vo



gue

bue

hue

pa\_\_guas



ra

rra

ta