

CONCIENCIA SILÁBICA:

Recorta y pega

Parte I



María Olivares para Orientación Andújar



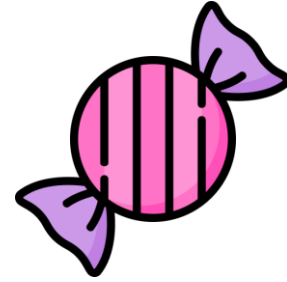
ba

be

bi

bo

bu



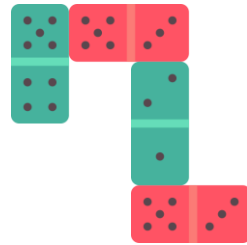
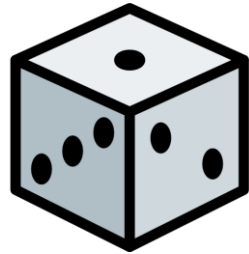
ca

ce

ci

co

cu



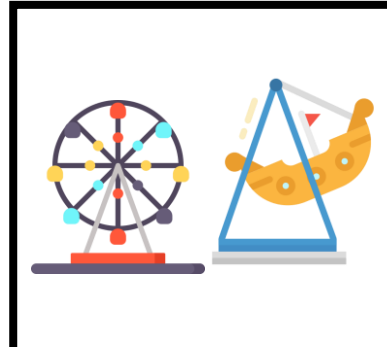
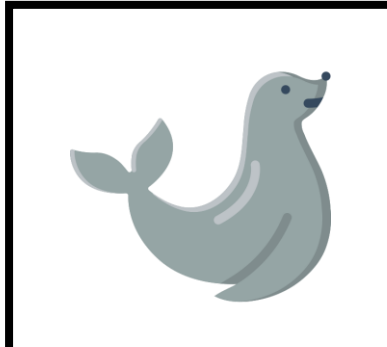
da

de

di

do

du



Blank space for writing the word corresponding to the factory illustration.

Blank space for writing the word corresponding to the seal illustration.

Blank space for writing the word corresponding to the flame illustration.

Blank space for writing the word corresponding to the Ferris wheel and carousel illustration.

Blank space for writing the word corresponding to the bowl of noodles illustration.

fa

fe

fi

fo

fu



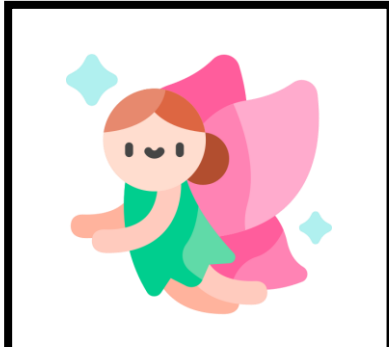
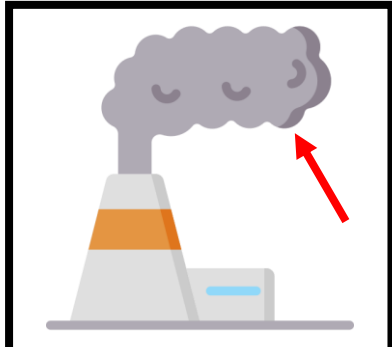
ga

ge

gi

go

gu



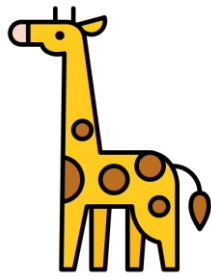
ha

he

hi

ho

hu



ja

je

ji

jo

ju