



Witch and Cauldron tracing activity

This section features a yellow dashed border. On the left is a cartoon witch with a purple hat and green skin. On the right is a purple cauldron with green liquid and a wooden spoon. Between them is a continuous dashed line forming a series of connected arches, intended for tracing practice. A small 'ORIENTA MEDIA' logo is centered at the bottom of this section.

Vampire and Castle tracing activity

This section features a black dashed border. On the left is a cartoon vampire with a black cape and a red bow tie. On the right is a purple castle with yellow windows. Between them is a continuous dashed line forming a series of connected inverted 'V' shapes, intended for tracing practice. A small 'ORIENTA MEDIA' logo is centered at the bottom of this section.

Ghost and Scythe tracing activity

This section features a purple dashed border. On the left is a purple tombstone with a cross. On the right is a scythe with a red handle and a silver blade. Between them are four dashed circles, each containing two small crescent shapes for eyes, representing a ghost's face. The circles are intended for tracing practice. A small 'ORIENTA MEDIA' logo is centered at the bottom of this section.





Tracing practice row 1: A mummy icon on the left, followed by four dashed semi-circles for tracing, and a hand holding a knife icon on the right. A small 'ORIENTA MEDIA' logo is visible in the center of the second semi-circle.

Tracing practice row 2: A purple bat icon on the left, followed by four dashed diamond shapes for tracing, and a blue character icon on the right. A small 'ORIENTA MEDIA' logo is visible in the center of the second diamond.

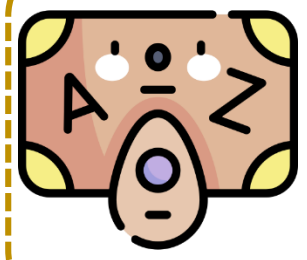
Tracing practice row 3: A character with a pumpkin head icon on the left, followed by four dashed star shapes for tracing, and a character with a wand icon on the right. A small 'ORIENTA MEDIA' logo is visible in the center of the second star.





Une y forma la calabaza entera





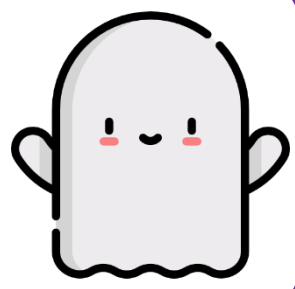
Handwriting practice row for the letter 'A'. It contains four dashed outlines of the uppercase letter 'A' for tracing. A small 'ORIENTA MEDIA' logo is visible in the center of the row.

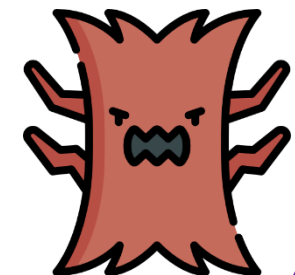
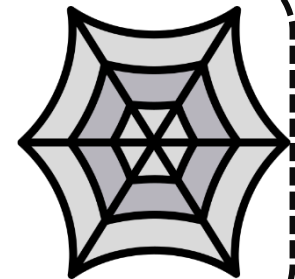
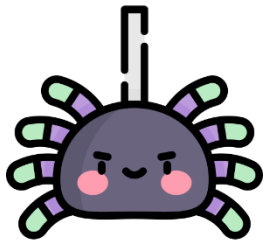
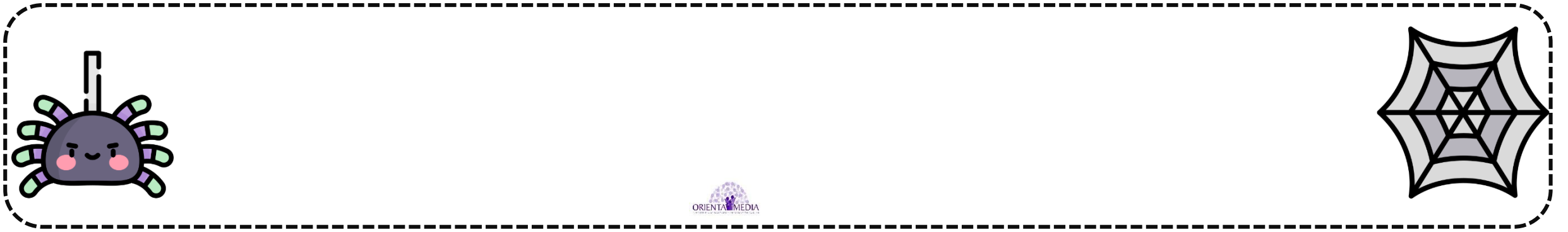
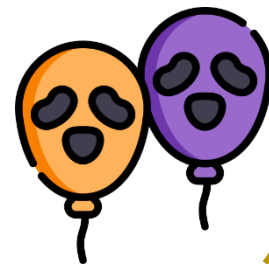


Handwriting practice row for the letter 'L'. It contains four dashed outlines of the uppercase letter 'L' for tracing. A small 'ORIENTA MEDIA' logo is visible in the center of the row.



Handwriting practice row for the letter 'G'. It contains four dashed outlines of the uppercase letter 'G' for tracing. A small 'ORIENTA MEDIA' logo is visible in the center of the row.









Tracing practice row 1: A yellow teardrop-shaped ring is on the left. The middle contains four dashed rectangular boxes for tracing. A purple tombstone with a white cross is on the right. A small 'ORIENTA MEDIA' logo is centered below the boxes.

Tracing practice row 2: A cartoon mummy head is on the left. The middle contains a long, continuous dashed line forming a wavy pattern for tracing. A purple and pink apple with a bite taken out is on the right. A small 'ORIENTA MEDIA' logo is centered below the line.

Tracing practice row 3: A purple skull with a yellow flame on top is on the left. The middle contains four dashed diamond shapes for tracing. A red square with a yellow pentagram in the center is on the right. A small 'ORIENTA MEDIA' logo is centered below the diamonds.





Tracing practice for a diamond shape. The row is enclosed in a dashed yellow border. It begins with a cartoon witch's face on the left and a purple witch's hat on the right. Between them are five dashed diamond shapes, each with a horizontal dashed line through its center. A small 'ORIENTA MEDIA' logo is centered below the second diamond.

Tracing practice for a rounded rectangle shape. The row is enclosed in a dashed black border. It begins with a cartoon pumpkin on the left and a cartoon boy holding a jack-o'-lantern on the right. Between them are five dashed rounded rectangles. A small 'ORIENTA MEDIA' logo is centered below the second rounded rectangle.

Tracing practice for a circle shape. The row is enclosed in a dashed purple border. It begins with a cartoon bat on the left and a cartoon vampire on the right. Between them are four dashed circles, each with a dashed 'X' inside. A small 'ORIENTA MEDIA' logo is centered below the second circle.





=



=



=



=





Elige su sombra

