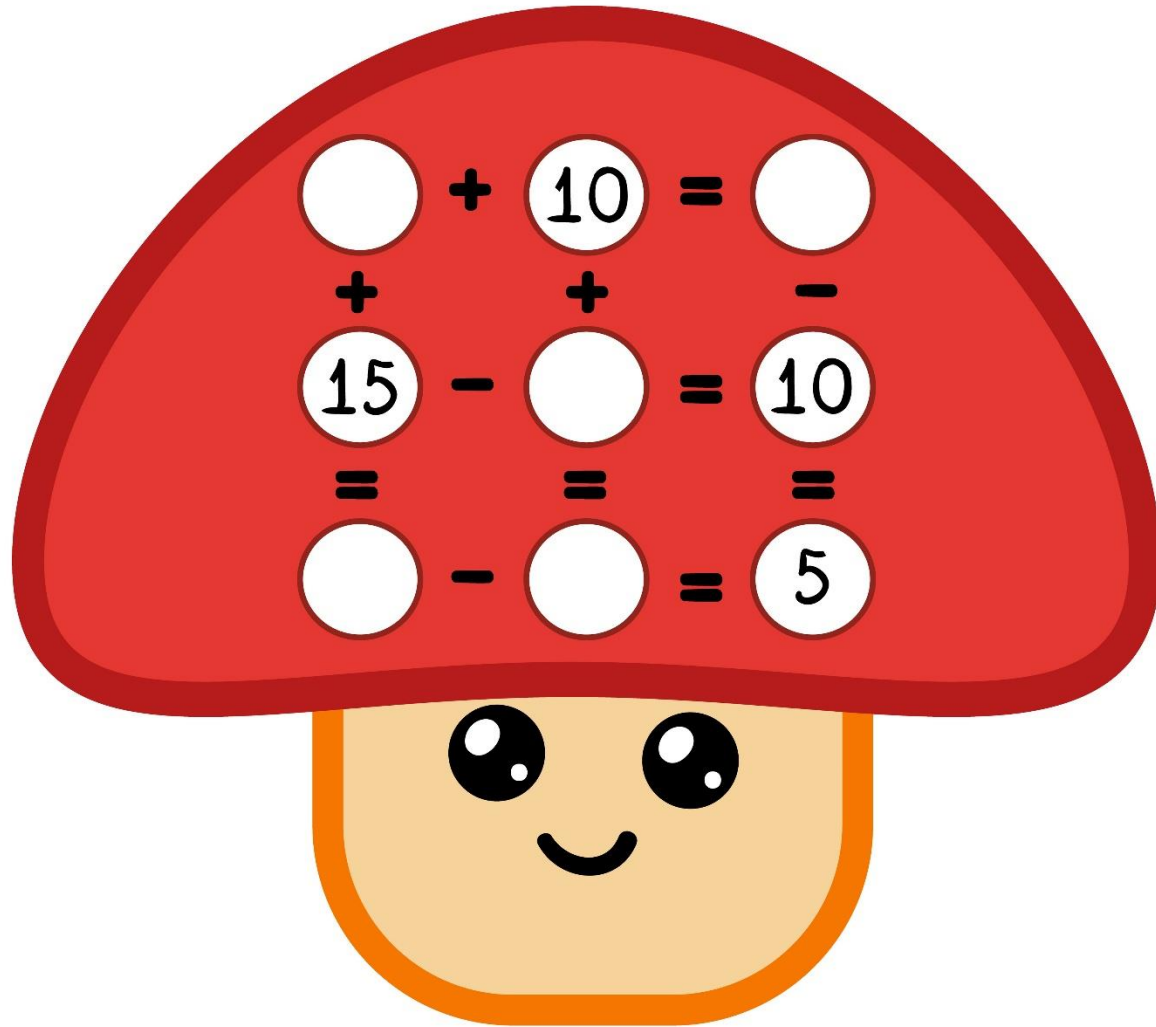


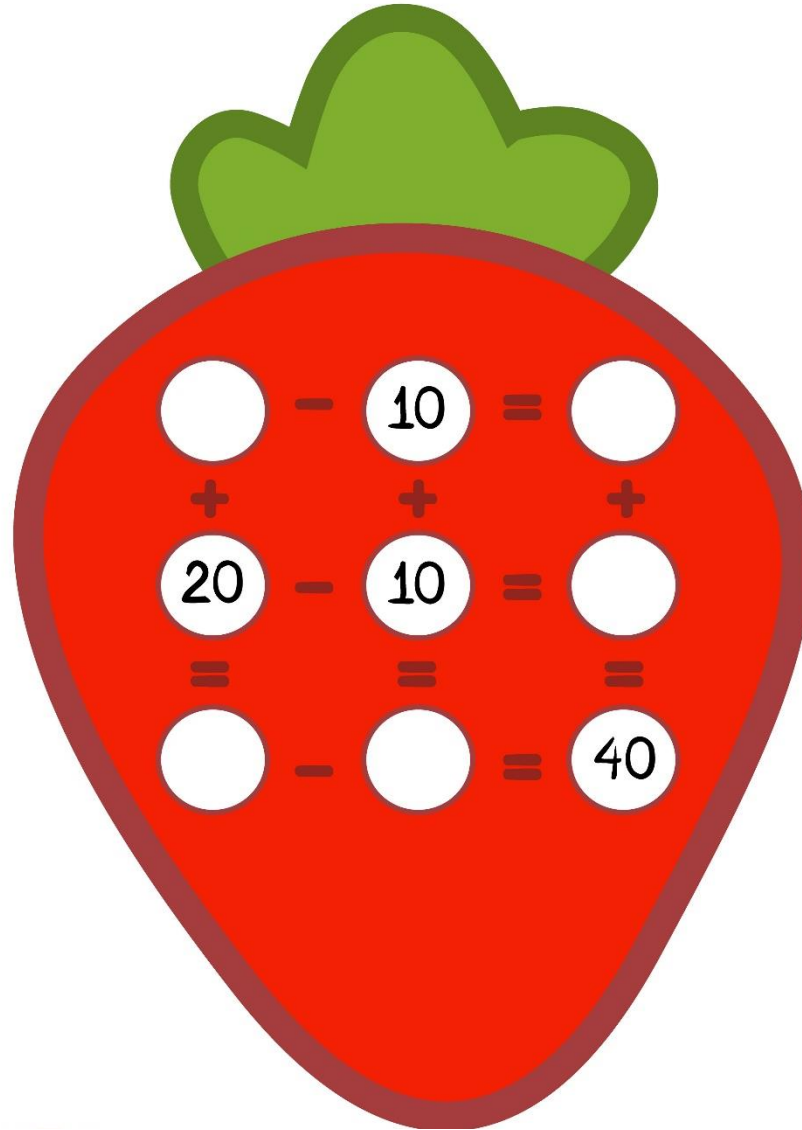
OPERACIONES BÁSICAS COMPLETAMOS HUECOS



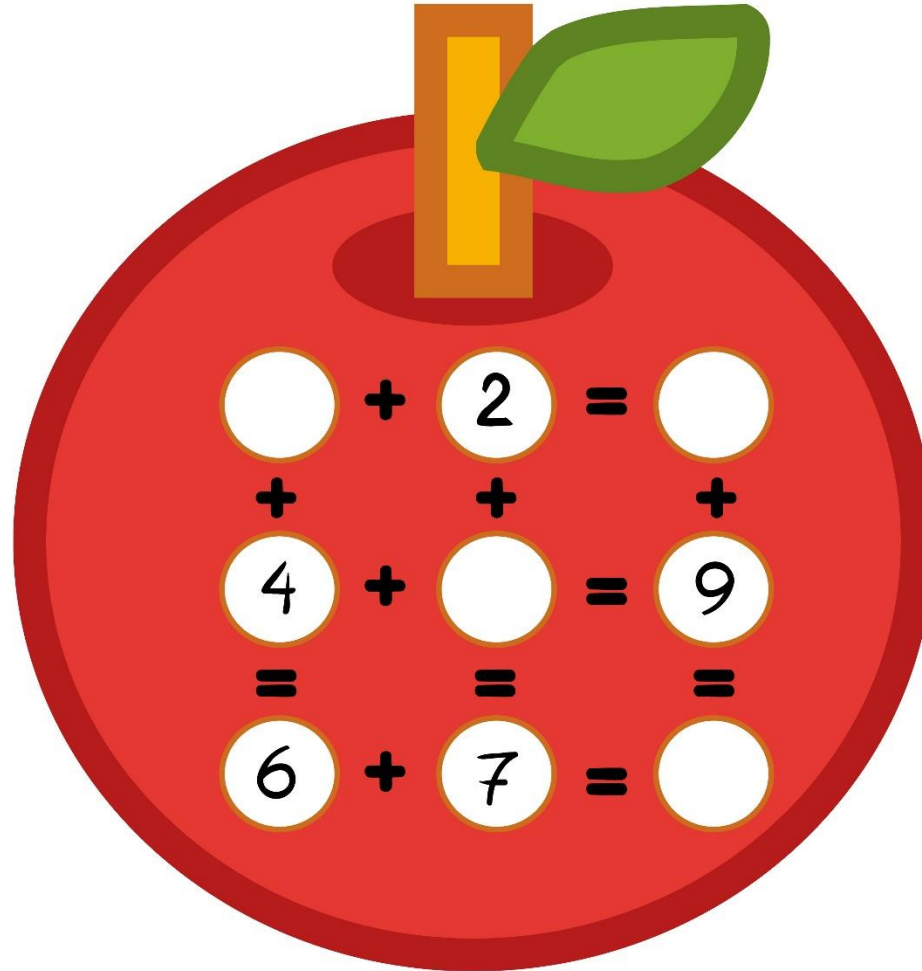
OPERACIONES BÁSICAS COMPLETAMOS HUECOS



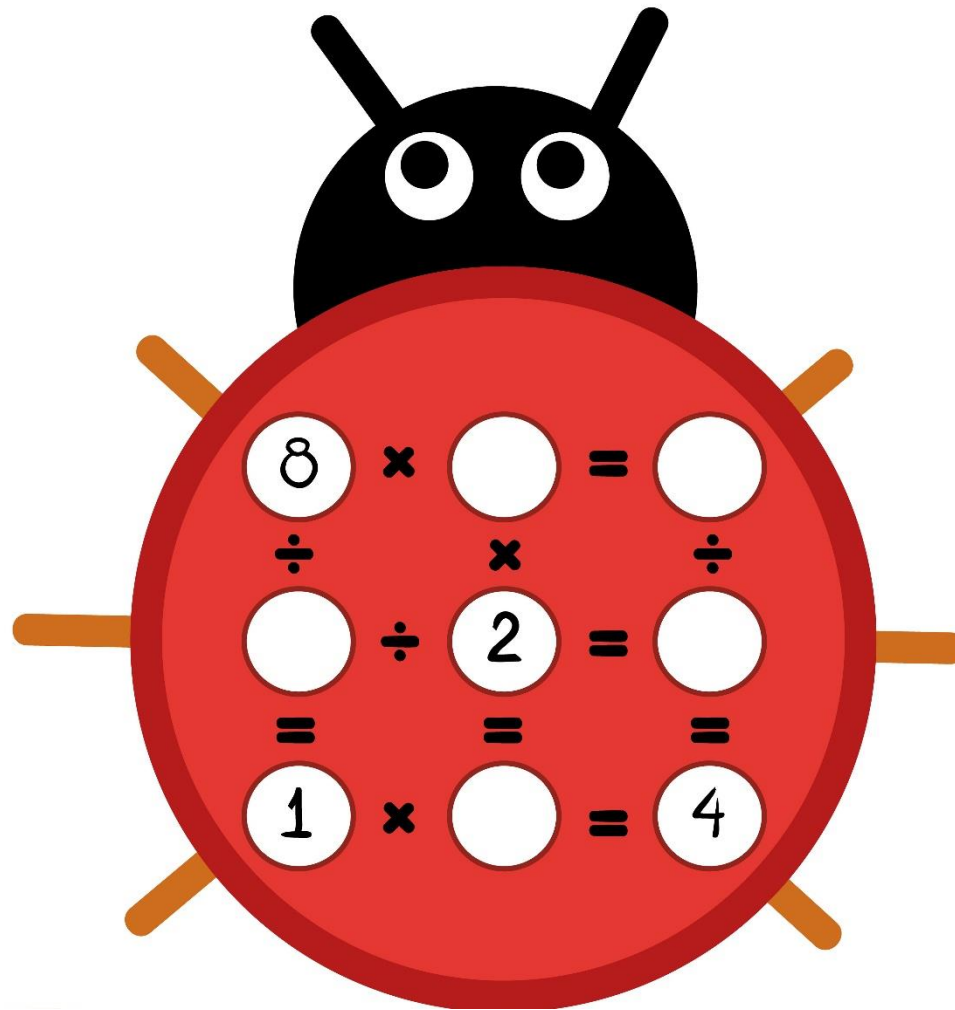
OPERACIONES BÁSICAS COMPLETAMOS HUECOS



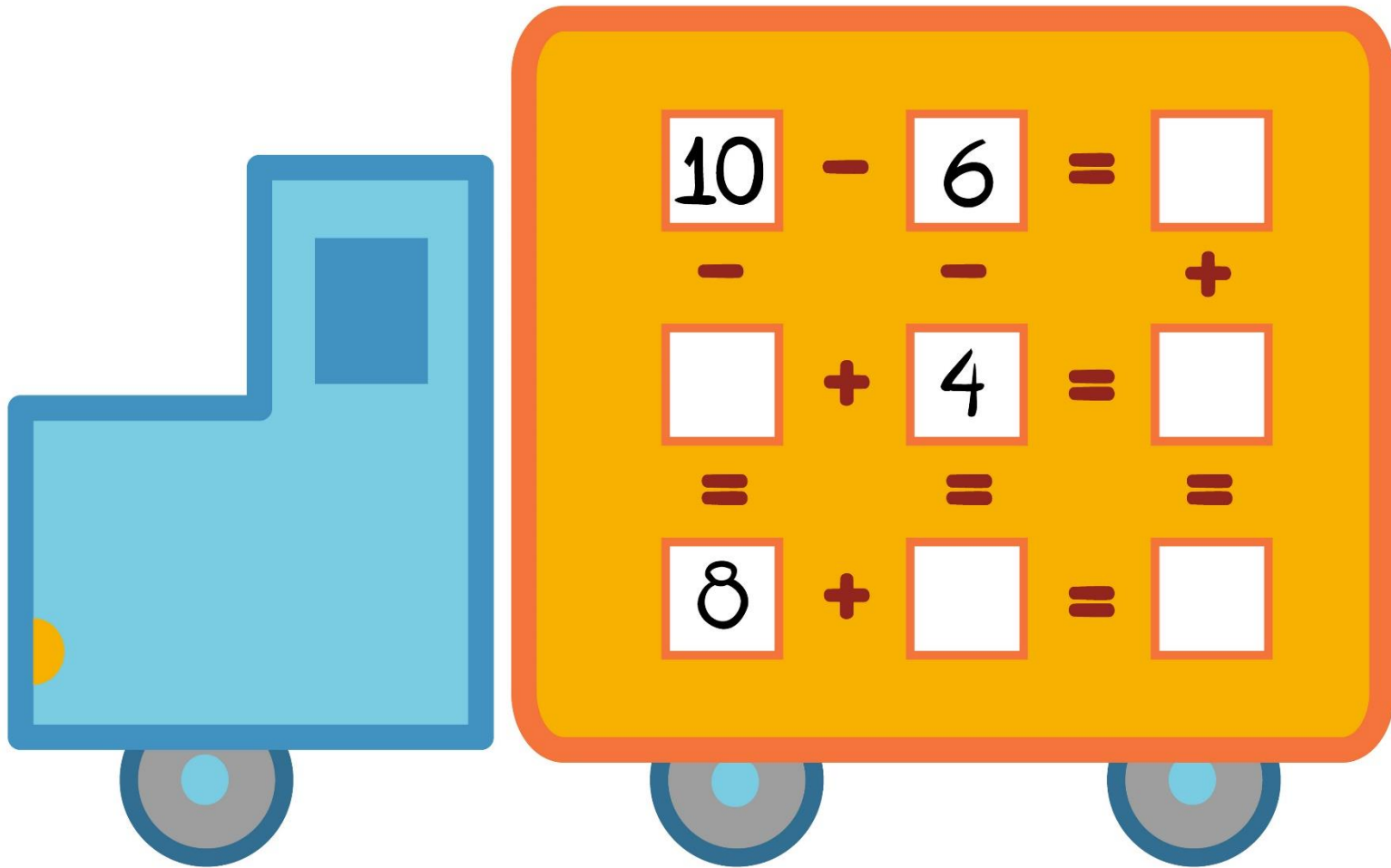
OPERACIONES BÁSICAS COMPLETAMOS HUECOS



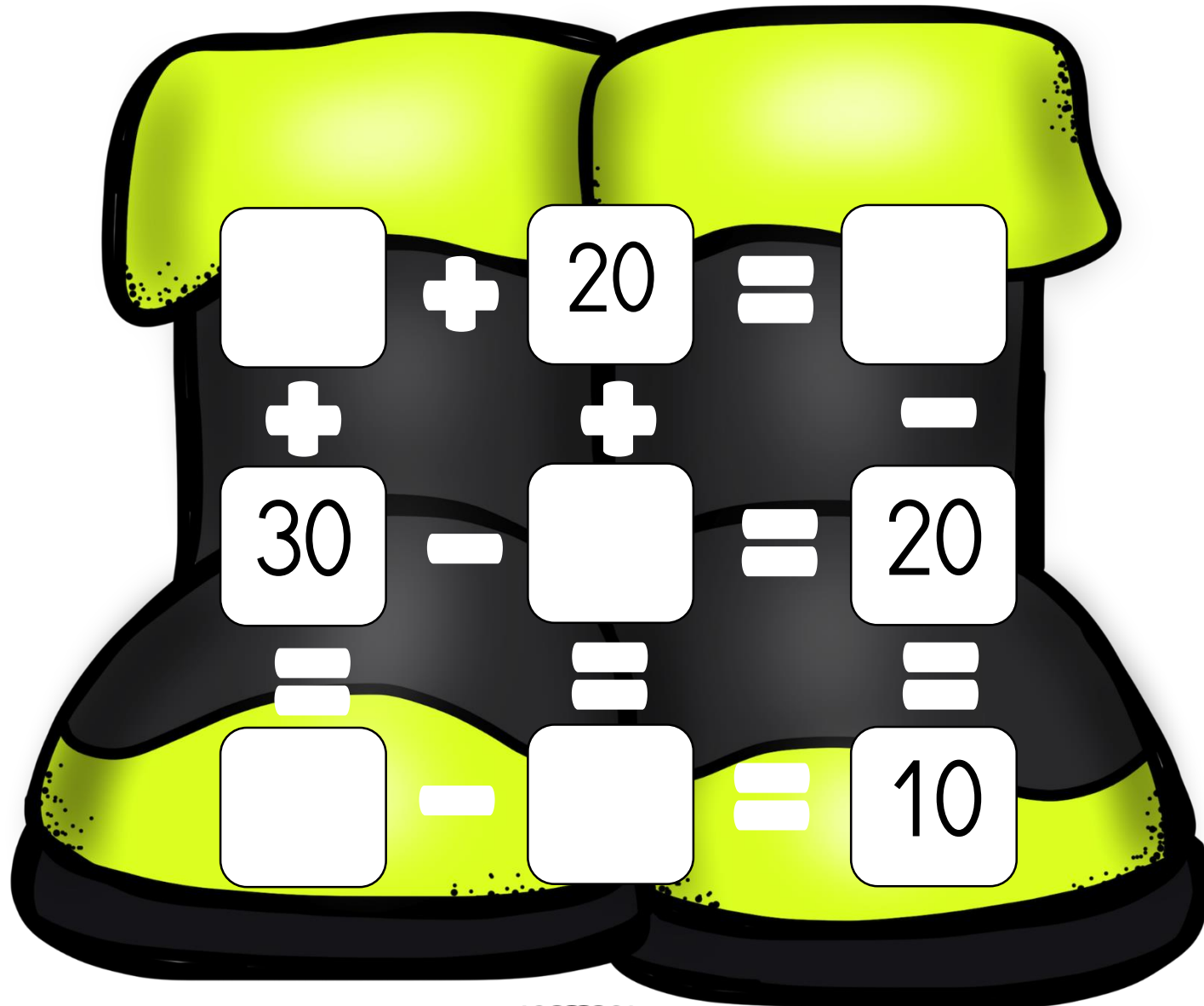
OPERACIONES BÁSICAS COMPLETAMOS HUECOS



OPERACIONES BÁSICAS COMPLETAMOS HUECOS



OPERACIONES BÁSICAS COMPLETAMOS HUECOS

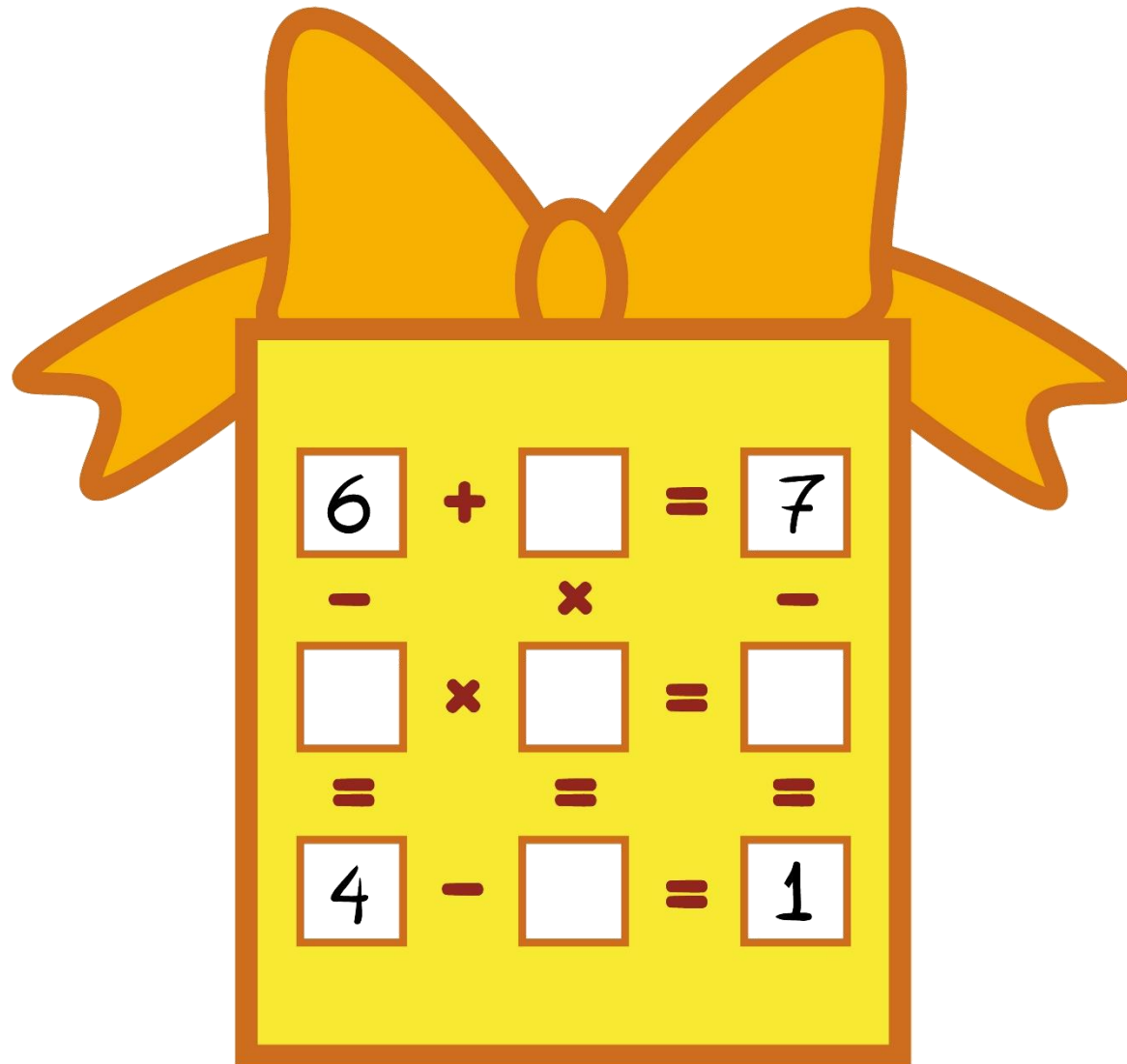


$$\square + 20 = \square$$

$$30 + \square = 20$$

$$\square - \square = 10$$

OPERACIONES BÁSICAS COMPLETAMOS HUECOS



OPERACIONES BÁSICAS COMPLETAMOS HUECOS



OPERACIONES BÁSICAS COMPLETAMOS HUECOS

The calculator display shows three addition problems, each using a flower icon to represent a number or an empty space for an answer:

- Row 1: A flower with the number 4, followed by a plus sign, a flower with the number 3, followed by an equals sign, and a flower with an empty yellow circle.
- Row 2: A flower with an empty yellow circle, followed by a plus sign, a flower with the number 4, followed by an equals sign, and a flower with an empty yellow circle.
- Row 3: A flower with the number 5, followed by a plus sign, a flower with the number 7, followed by an equals sign, and a flower with an empty yellow circle.

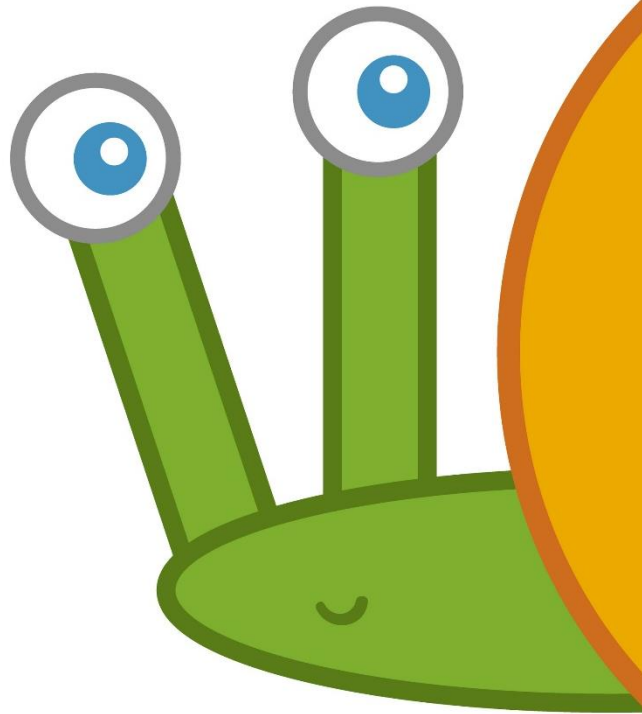
Small plus and equals signs are placed between the flowers in each row to indicate the operations. Additionally, there are small plus signs between the first and second flowers, and between the second and third flowers in each row, and small equals signs between the first and second, and between the second and third flowers in each row.

OPERACIONES BÁSICAS COMPLETAMOS HUECOS

A green car with a math problem board on its roof and three blue wheels. The board contains three simple arithmetic problems with missing numbers in white boxes.

6	-		=	2
+		+		+
	-	1	=	
=		=		=
8	-		=	3

OPERACIONES BÁSICAS COMPLETAMOS HUECOS



20 ÷ 2 =

+ × ×

÷ 10 = 3

= = =

- 20 =