

RULETAS

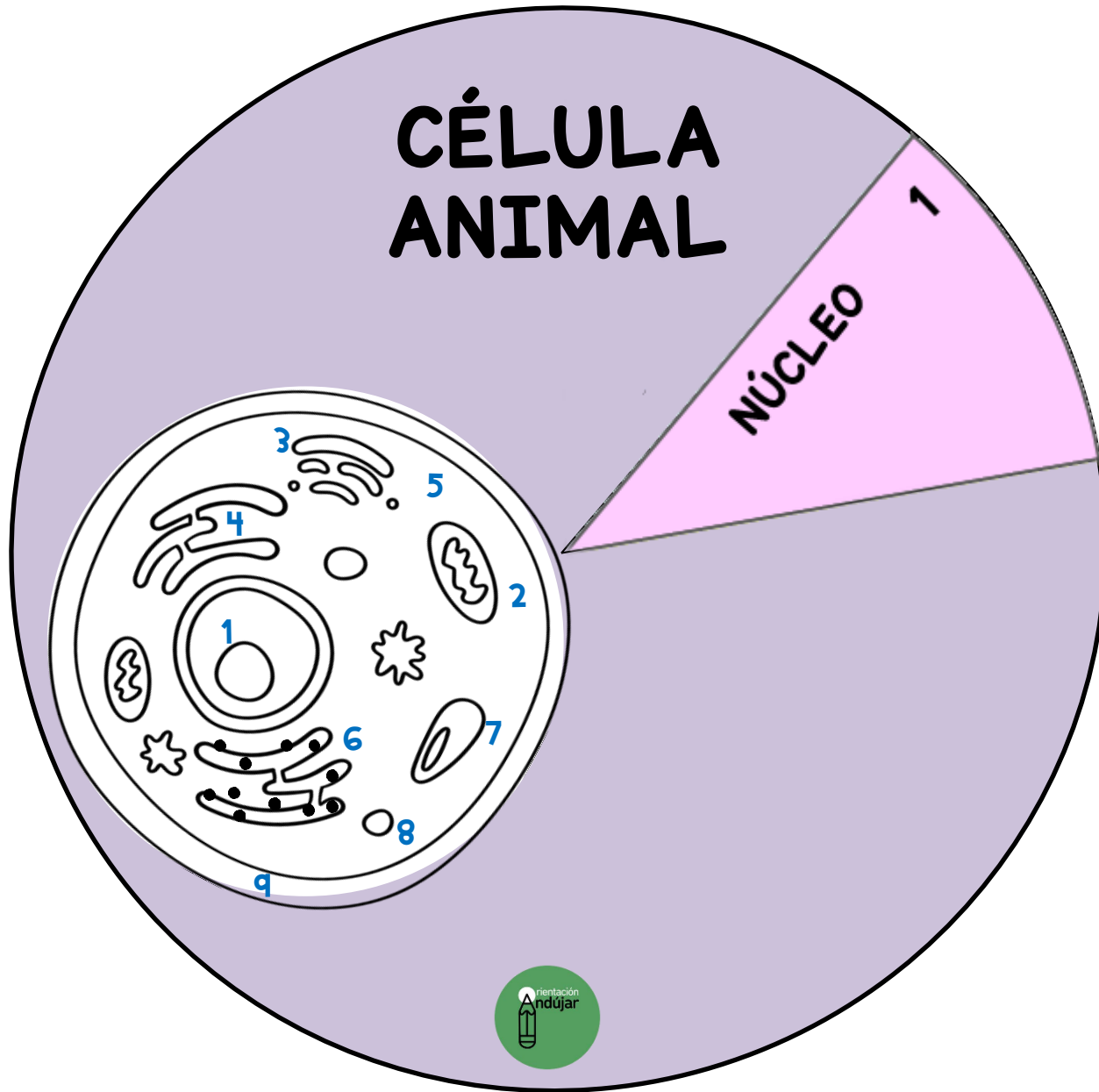
CÉLULA ANIMAL

CÉLULA VEGETAL



CÉLULA ANIMAL

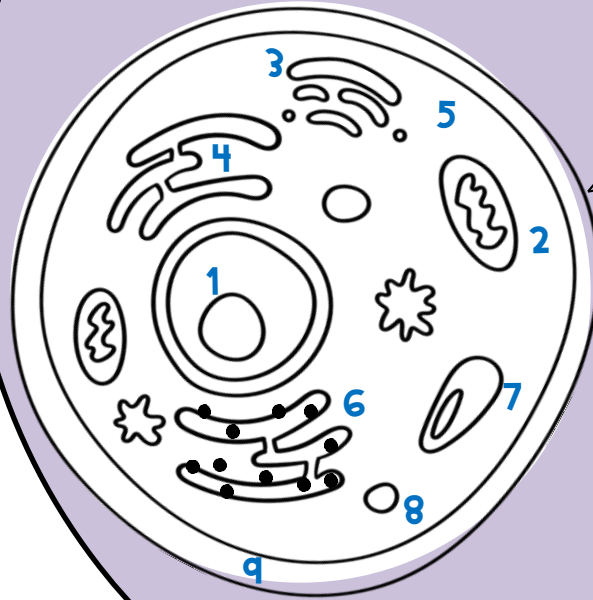
NÚCLEO 1

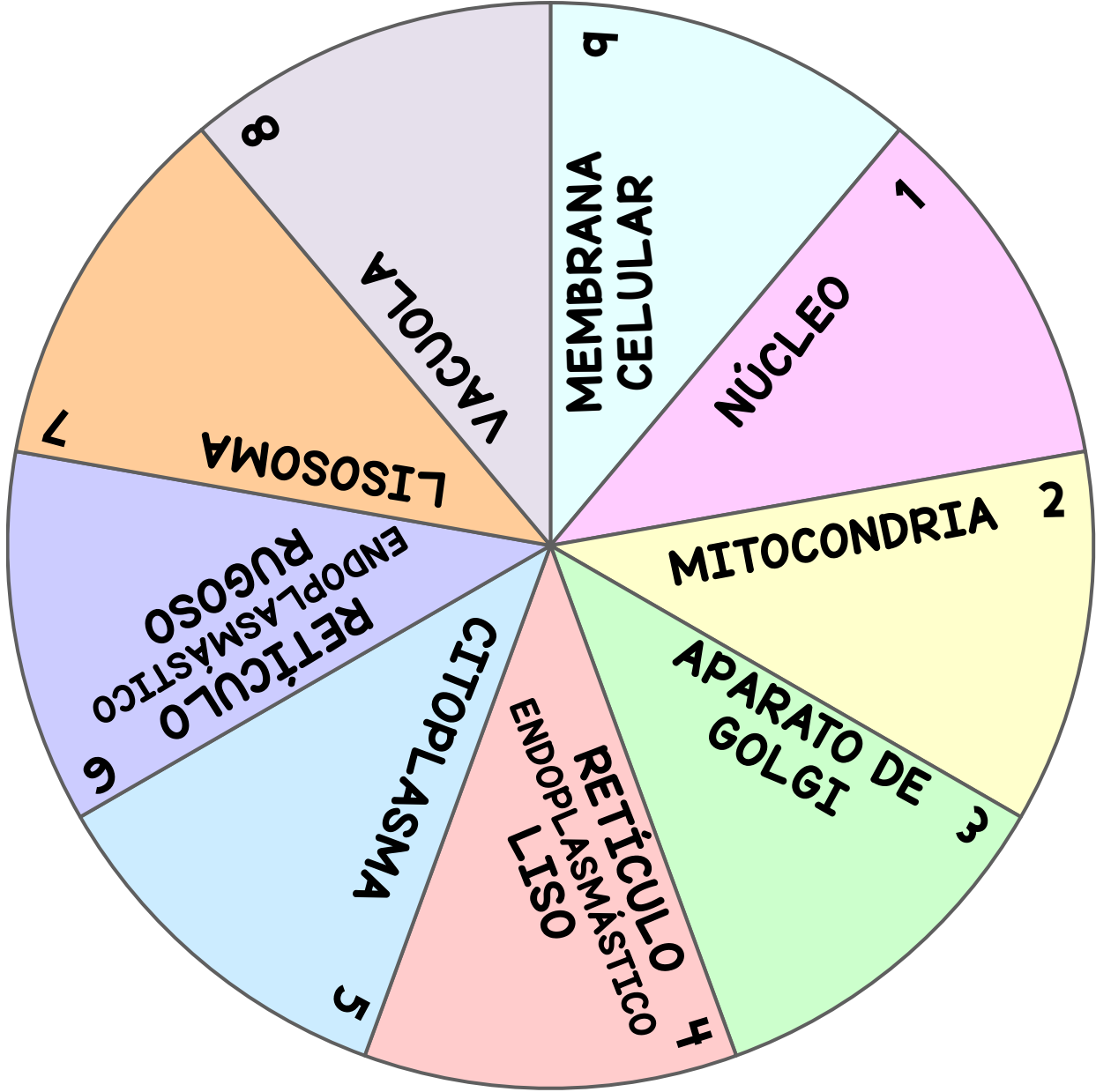


MODELO
TERMINADO
Girar la
ruleta y ver
referencias
de las
partes de la
célula

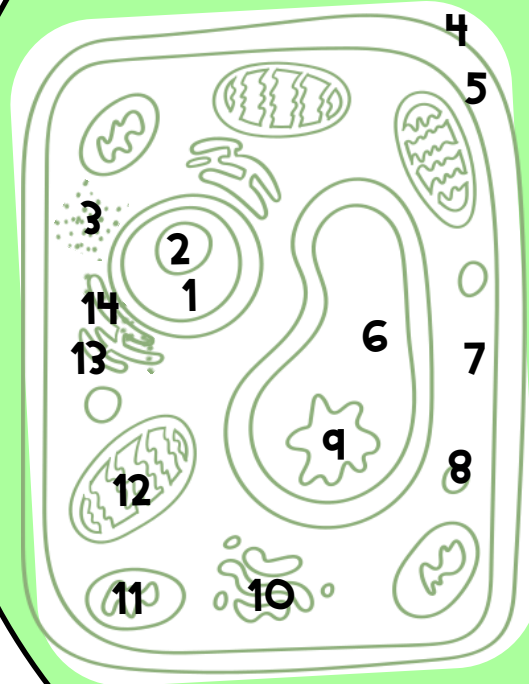
CÉLULA ANIMAL

Recortar





CÉLULA VEGETAL

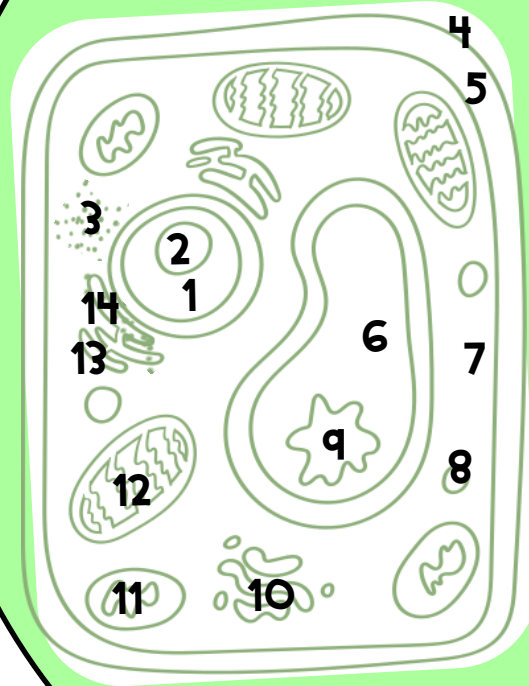


PARED
CELULAR

MODELO
TERMINADO
Girar la
ruleta y ver
referencias
de las
partes de la
célula



CÉLULA VEGETAL



Recortar

