

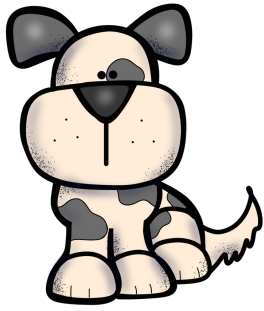


TARJETAS DE LECTOESCRITURA

Ordena las letras

de:

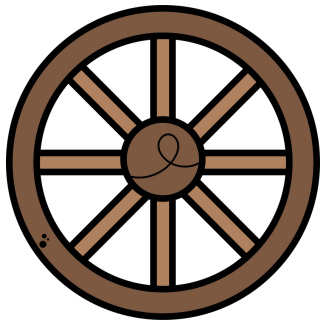
del:



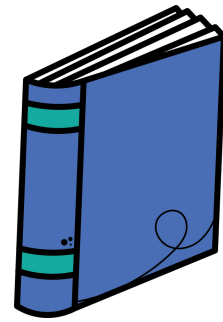
r e
p o r



c r
a t a

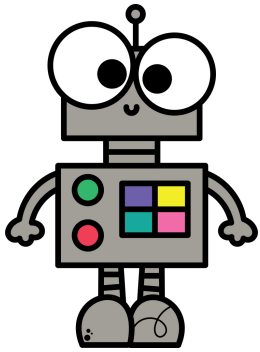


e u
a r d

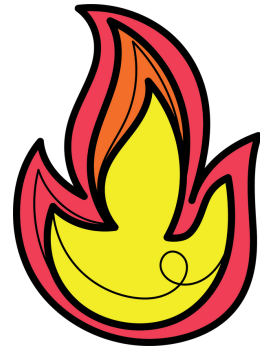


r i
b l o





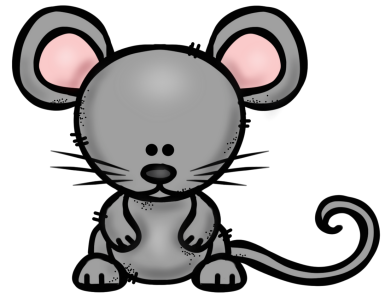
t r
o b o



e o
g f u

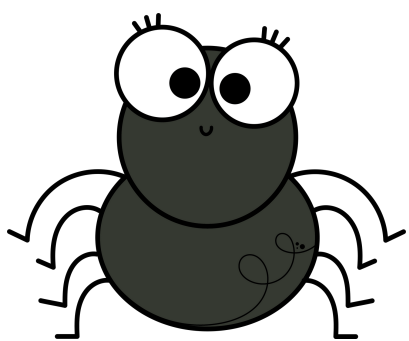


n c
c i o



a ó
t r n





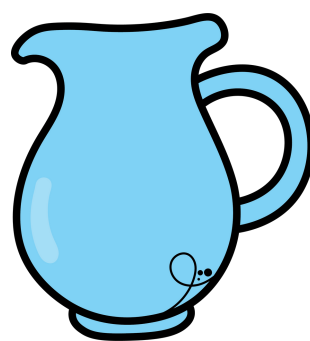
ñ

r

a

a

a



r

a

j

a

r



r

c

b

e

a



r

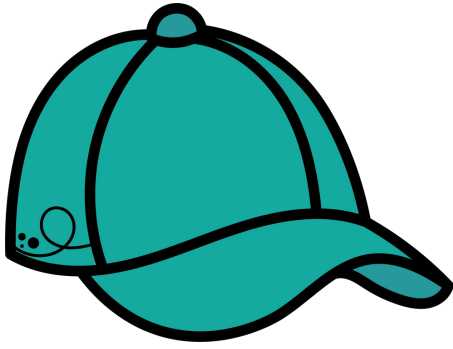
t

r

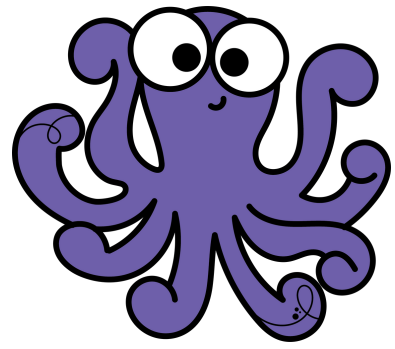
o

e

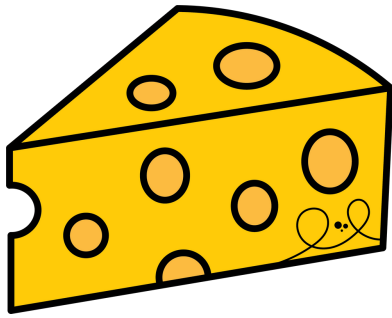




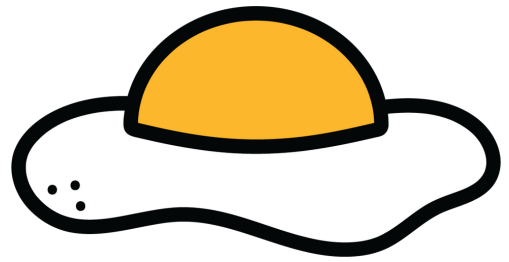
a o
r g r



o u
p p l

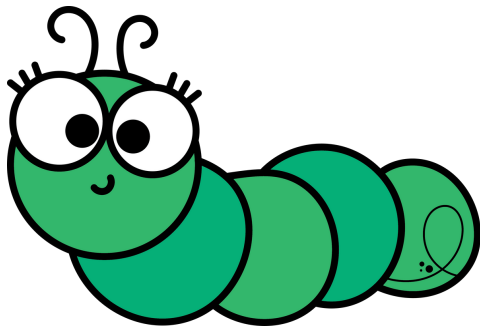


e o
s u q



u h
o e v

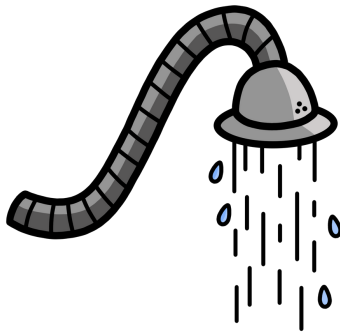




u r
g a o



b r
c a o





u d
h c a


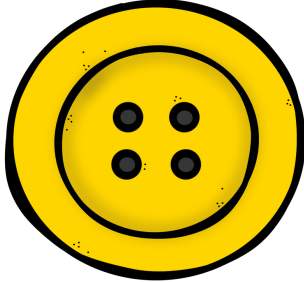



o r
o z r


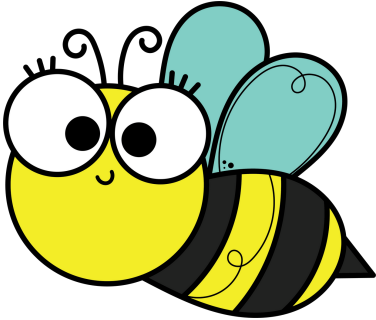






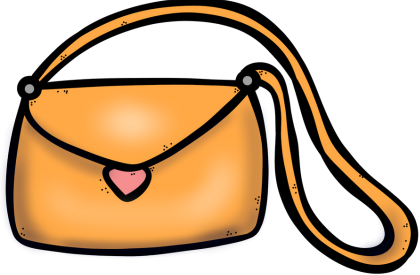

l o
b g o



b ó
n o t



e a
b j a



l o
o s b

