

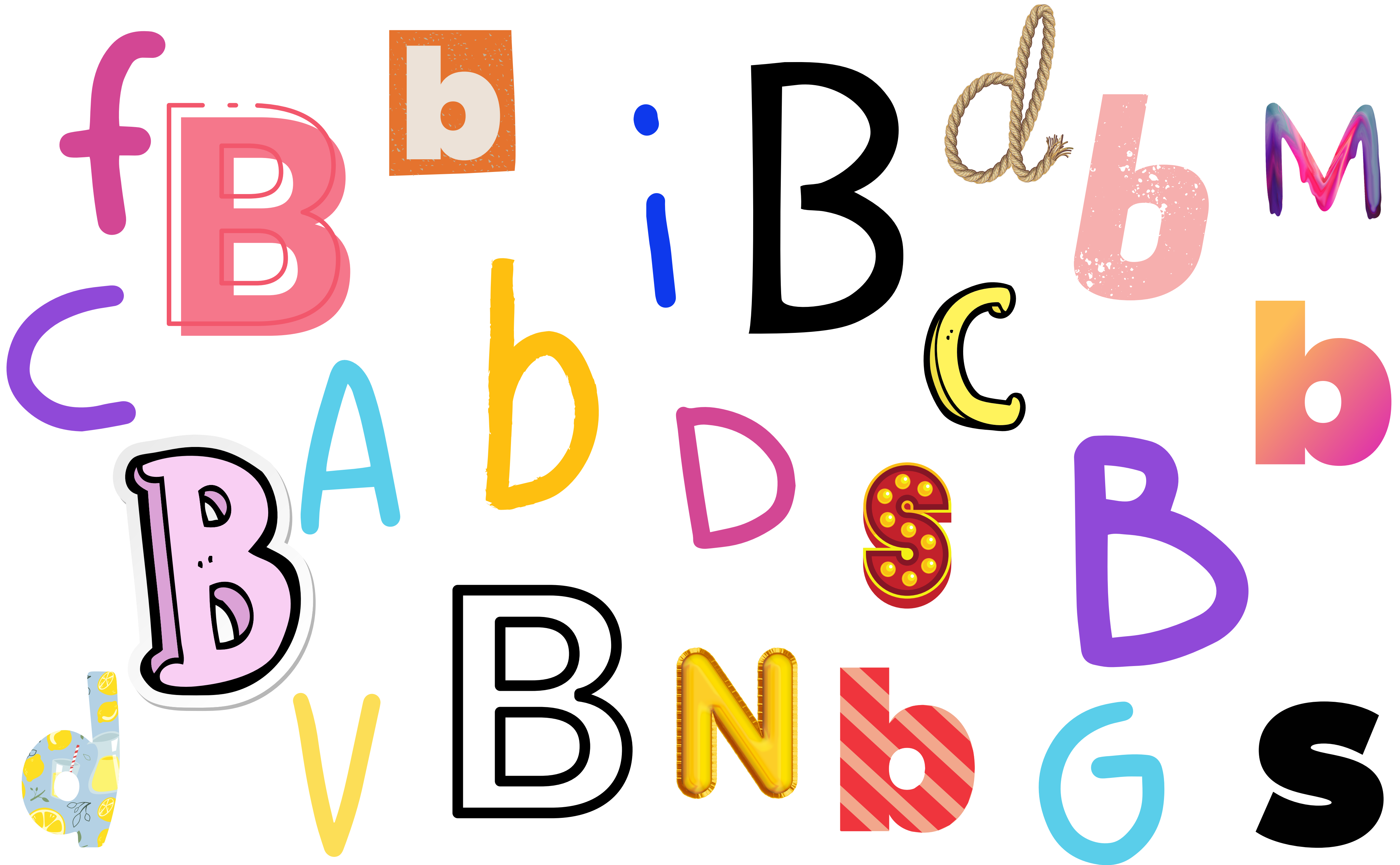


La **B**onita

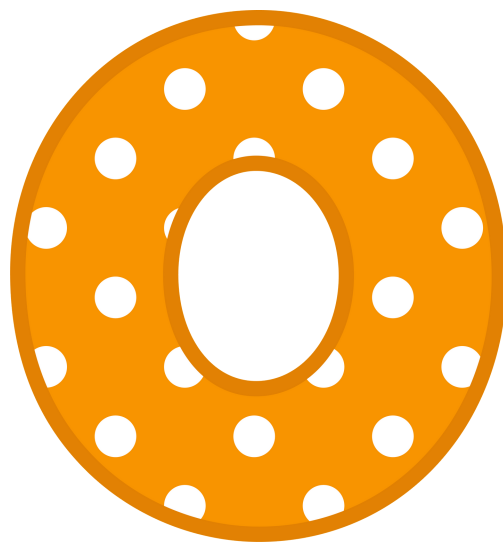
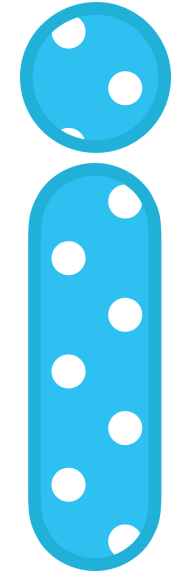
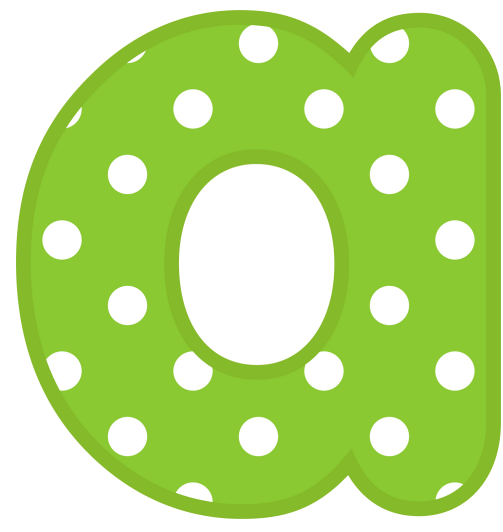
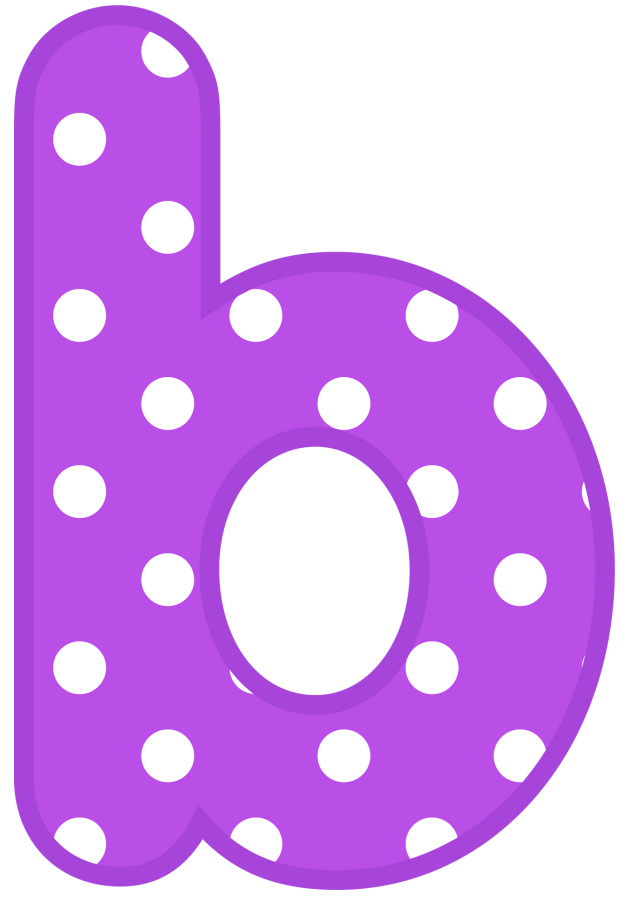
letra **B**



Busca las letras B. Rodea con rojo las mayúsculas y con verde, las minúsculas



Forma las sílabas



Light blue writing box for the letter 'a'.

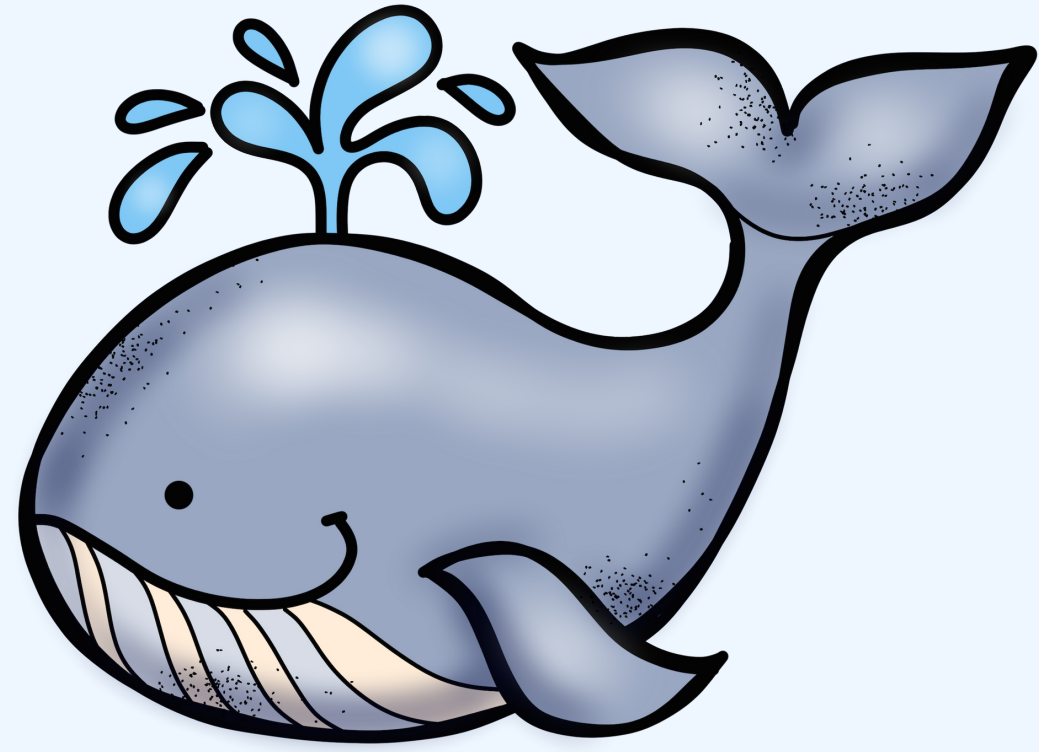
Light blue writing box for the letter 'e'.

Light blue writing box for the letter 'i'.

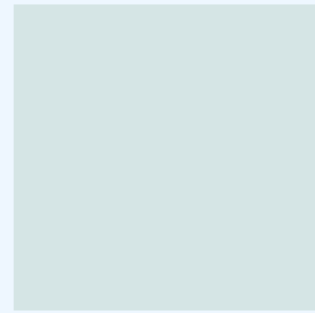
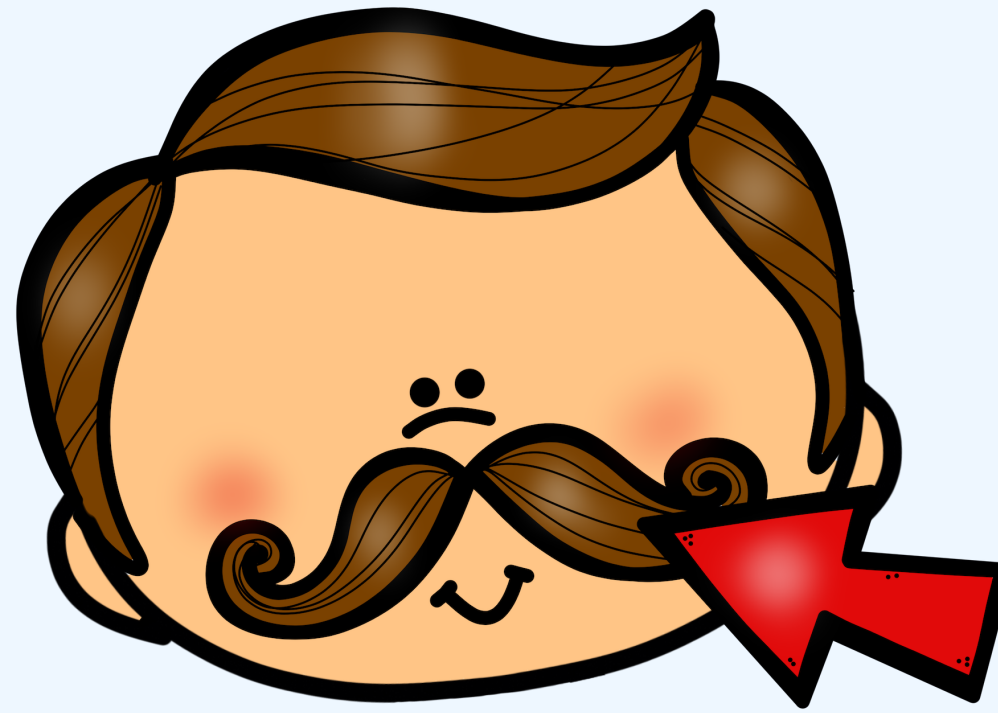
Light blue writing box for the letter 'o'.

Light blue writing box for the letter 'u'.

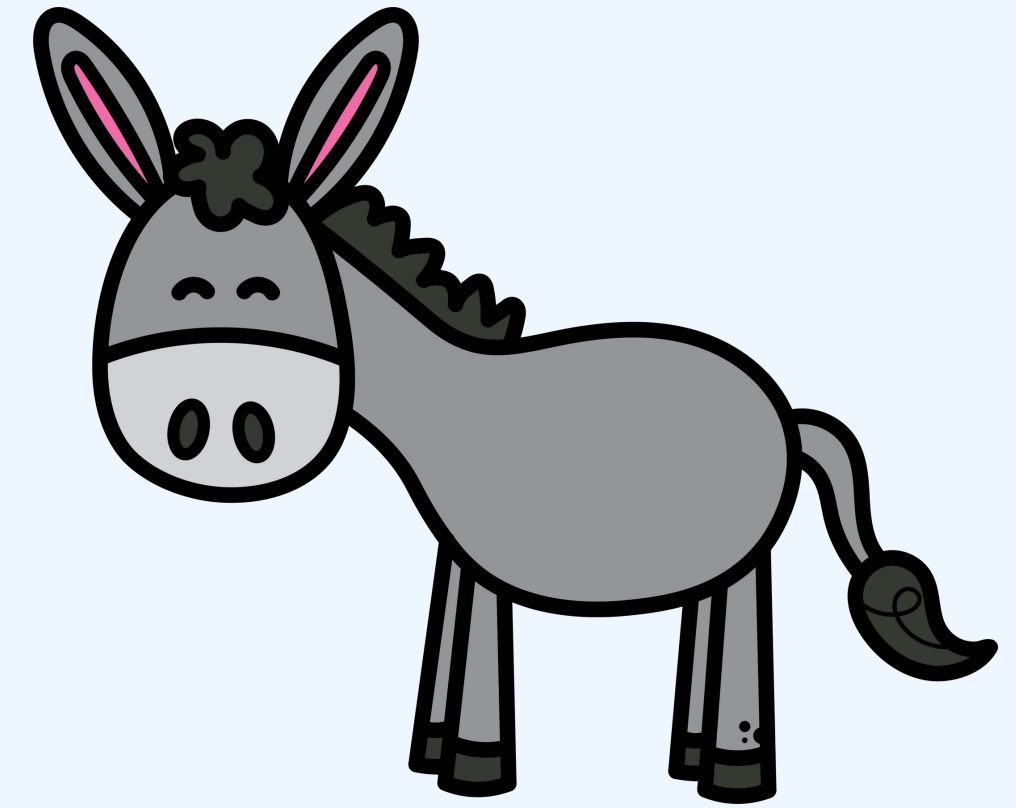
Completa



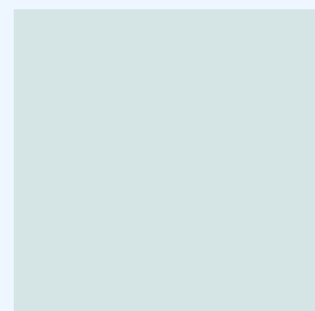
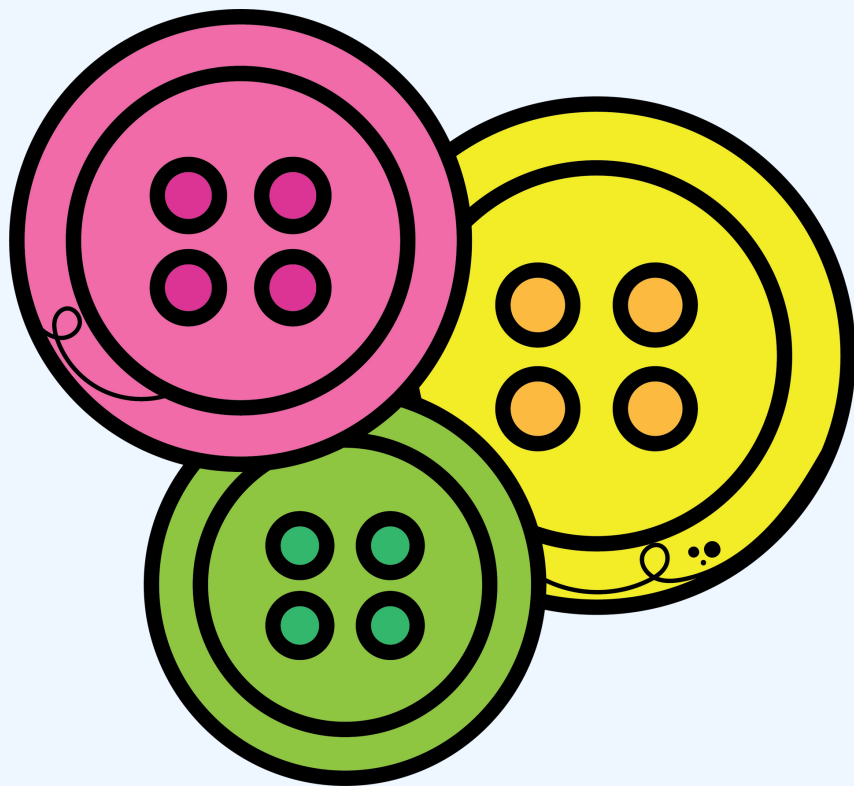
LLENA



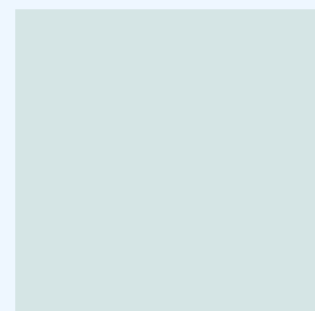
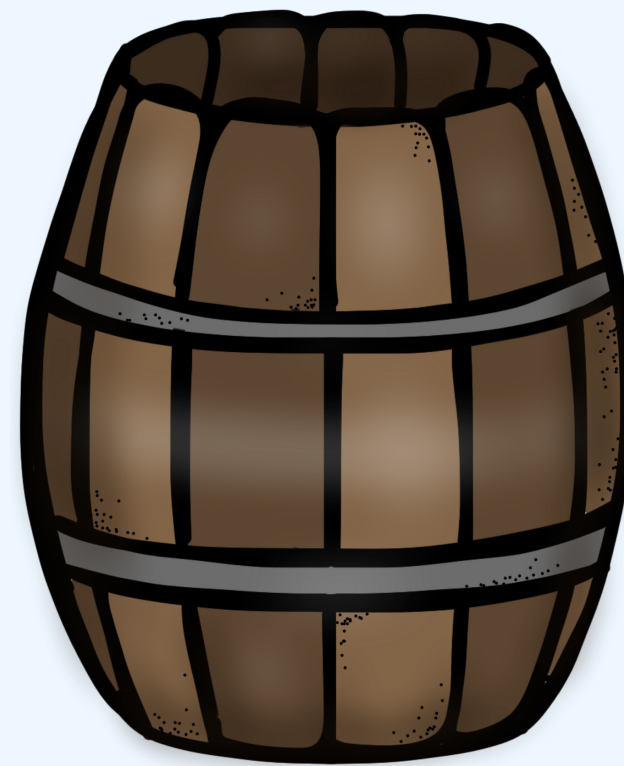
GOTE



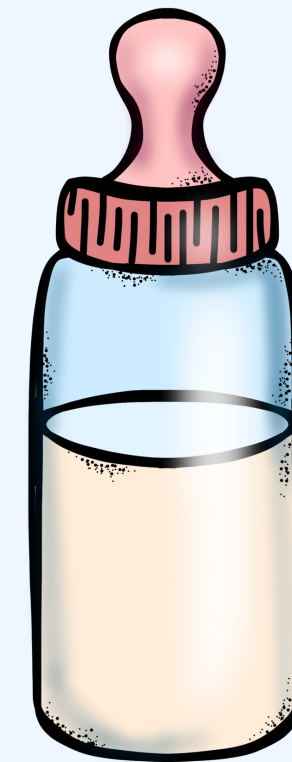
RRO



TONES

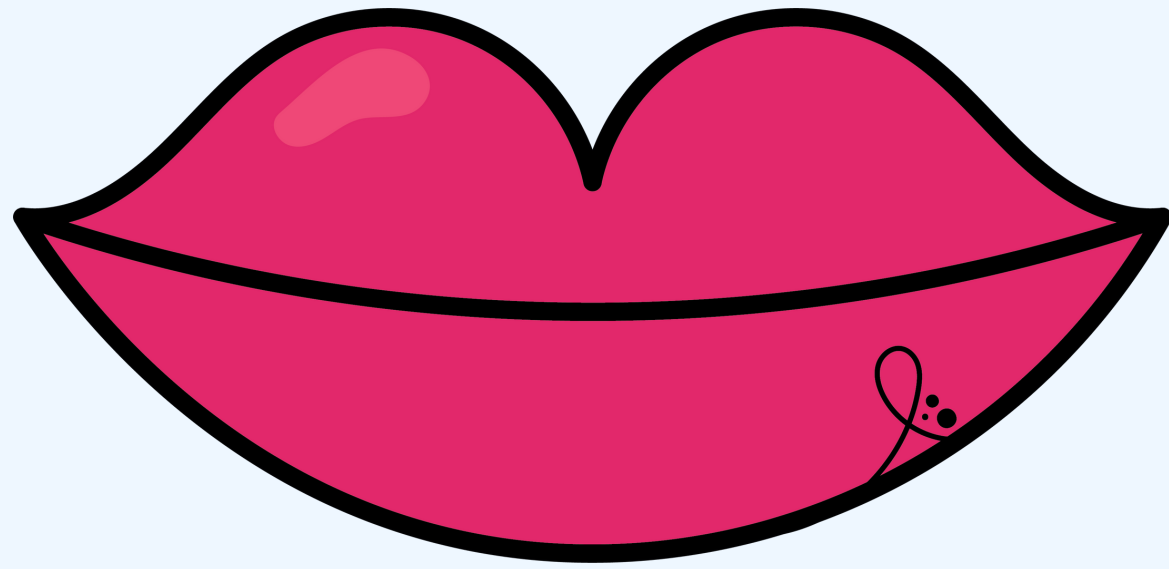


RRIL



BERÓN

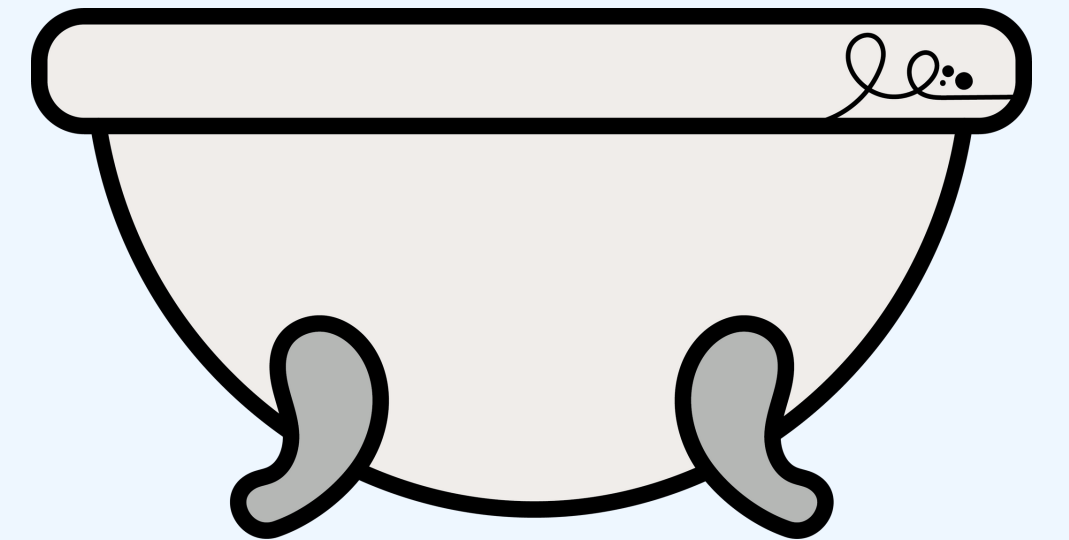
Completa



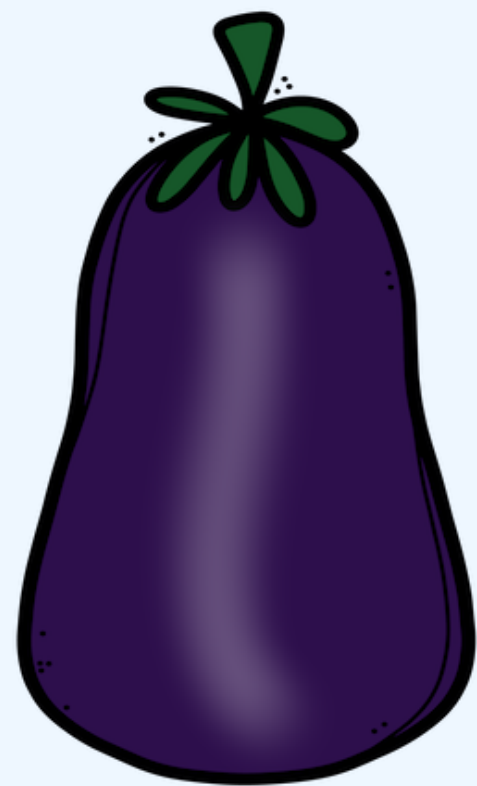
CA



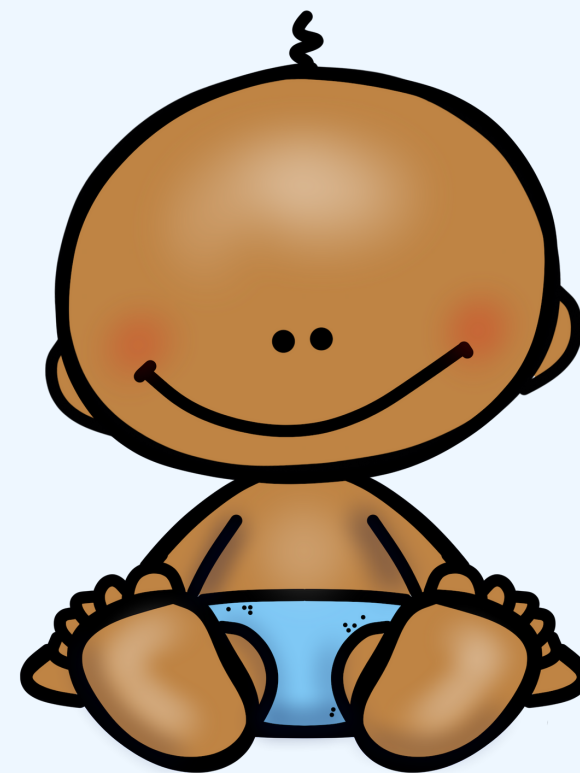
RRETE



ÑERA



RENJENA

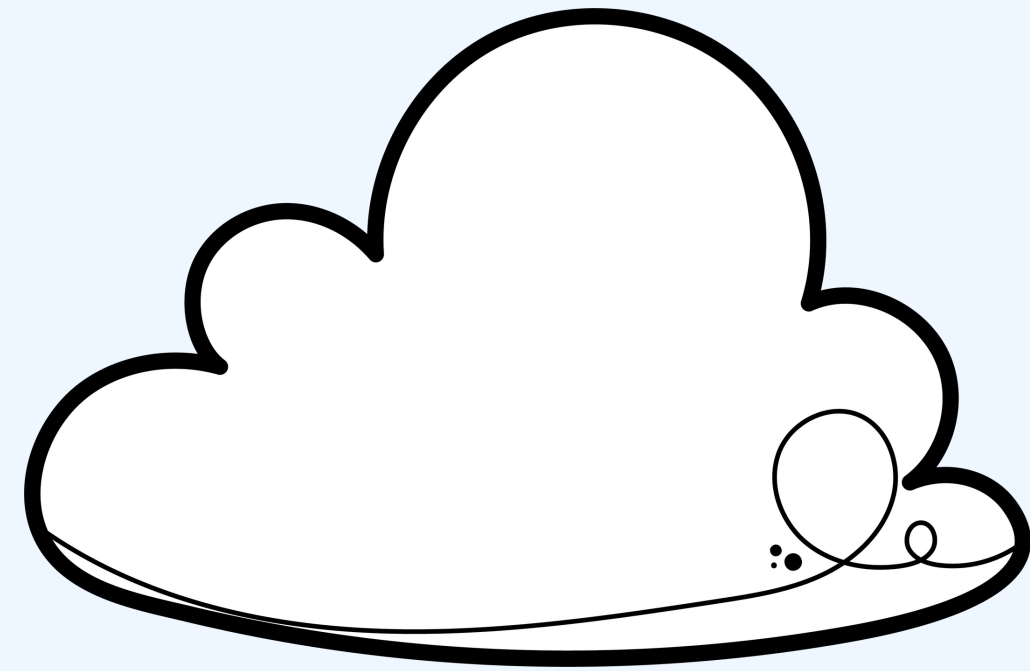


BÉ

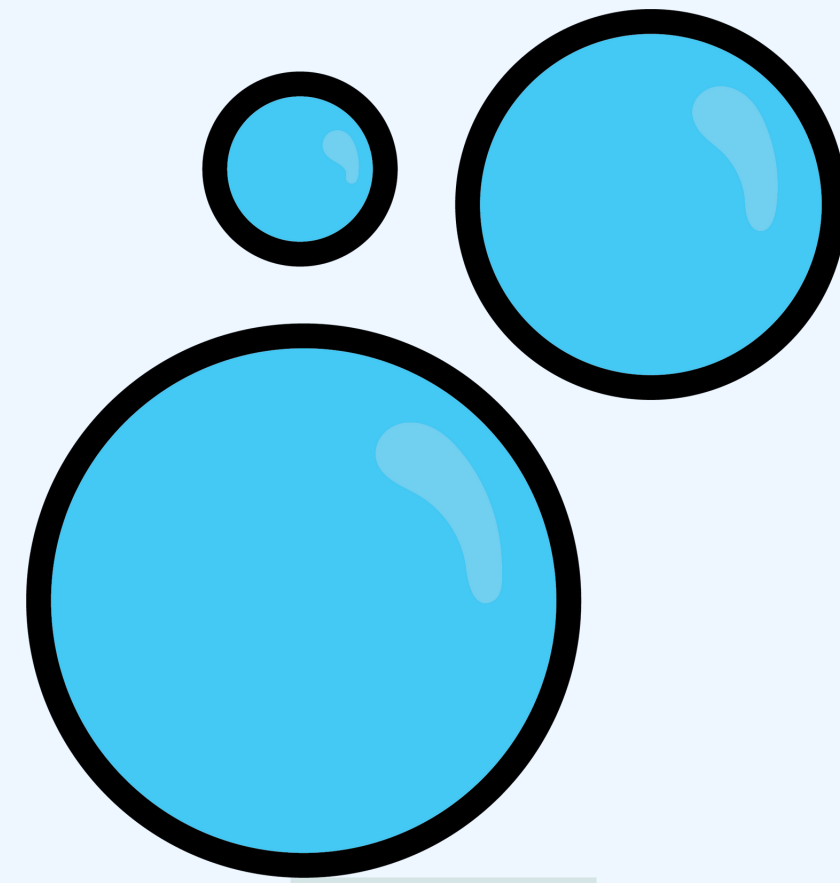


CADILLO

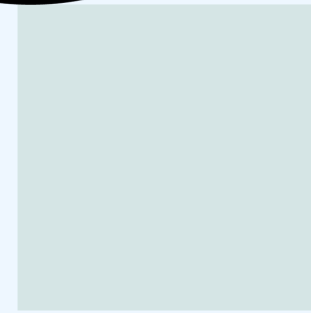
Completa



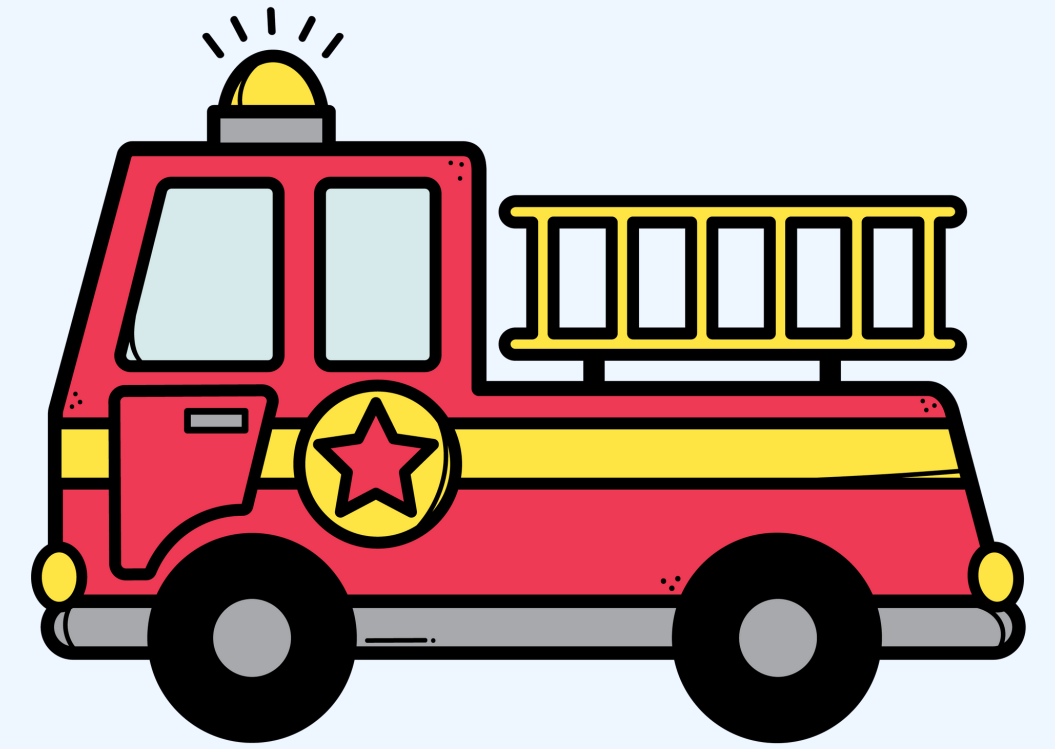
NU



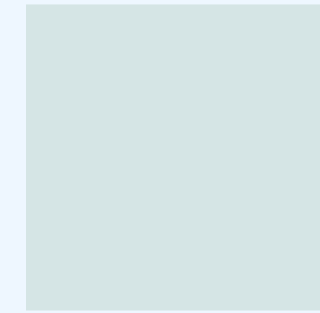
BUR



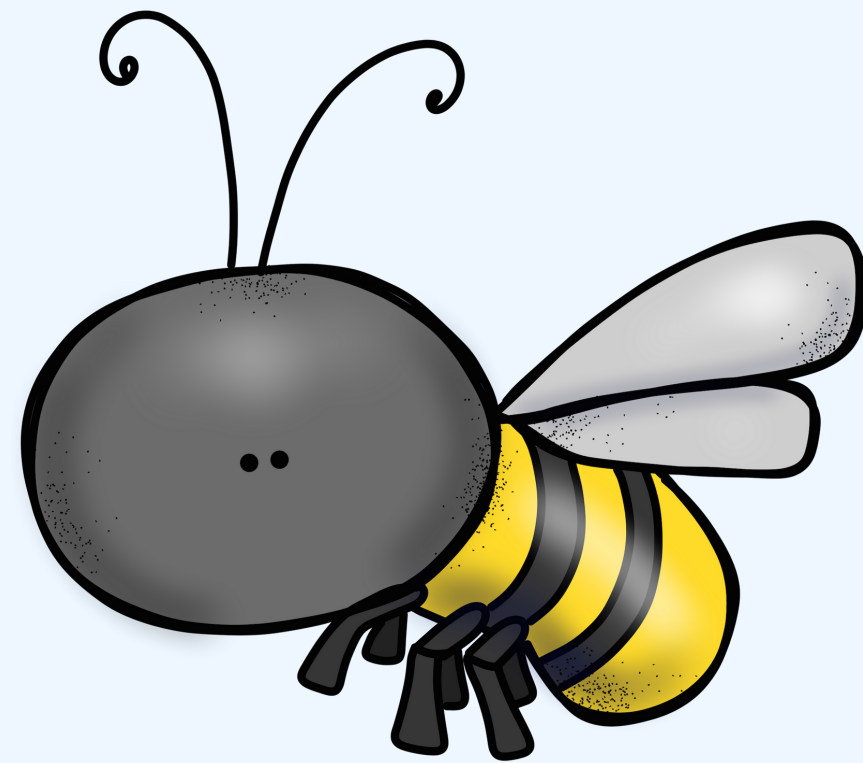
JAS



BOM



ROS



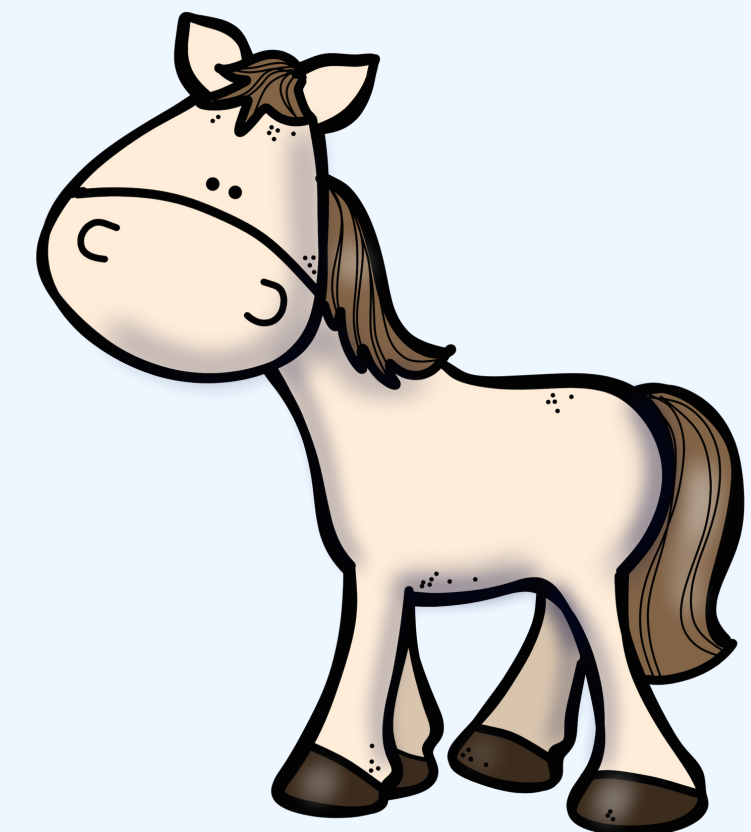
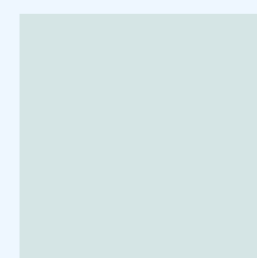
A



JA



ESCO



CA



LLO