



# ACTIVIDADES CON LOS VERBOS

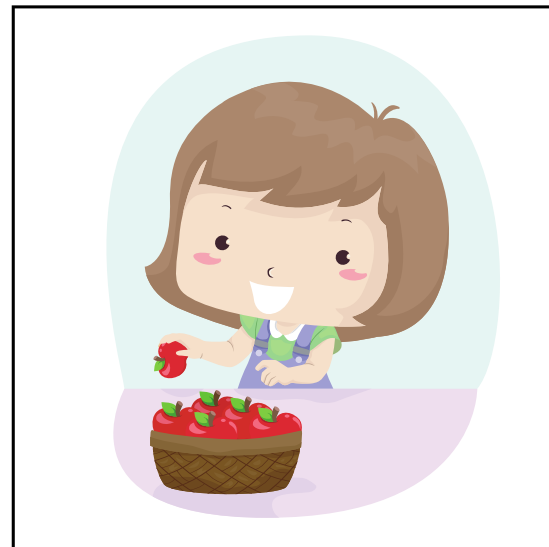


# VERBOS

OBSERVA EL DIBUJO. ESCRIBE EL VERBO QUE LE CORRESPONDE E INVENTA UNA FRASE.

*coser*

La niña cose su  
peluche.



# VERBOS

OBSERVA EL DIBUJO. ESCRIBE EL VERBO QUE LE CORRESPONDE E INVENTA UNA FRASE.

Blank light blue rectangular box for writing.

Two horizontal dashed lines for writing.



Blank light blue rectangular box for writing.

Two horizontal dashed lines for writing.



Blank light blue rectangular box for writing.

Two horizontal dashed lines for writing.



# VERBOS

OBSERVA EL DIBUJO. ESCRIBE EL VERBO QUE LE CORRESPONDE E INVENTA UNA FRASE.

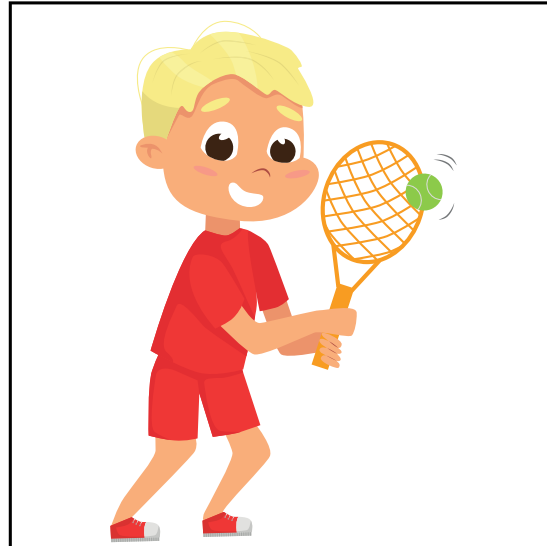
Blank light blue rectangular box for writing the verb.

Two horizontal dashed lines for writing a sentence.



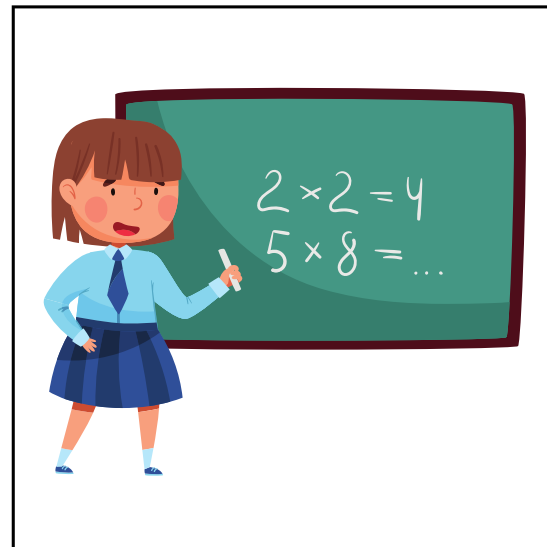
Blank light blue rectangular box for writing the verb.

Two horizontal dashed lines for writing a sentence.



Blank light blue rectangular box for writing the verb.

Two horizontal dashed lines for writing a sentence.



# VERBOS

OBSERVA EL DIBUJO. ESCRIBE EL VERBO QUE LE CORRESPONDE E INVENTA UNA FRASE.

Blank light blue rectangular box for writing the verb.

Two horizontal dashed lines for writing a sentence.



Blank light blue rectangular box for writing the verb.

Two horizontal dashed lines for writing a sentence.



Blank light blue rectangular box for writing the verb.

Two horizontal dashed lines for writing a sentence.



# VERBOS

OBSERVA EL DIBUJO. ESCRIBE EL VERBO QUE LE CORRESPONDE E INVENTA UNA FRASE.

Blank light blue rectangular box for writing the verb.

Two horizontal dashed lines for writing a sentence.



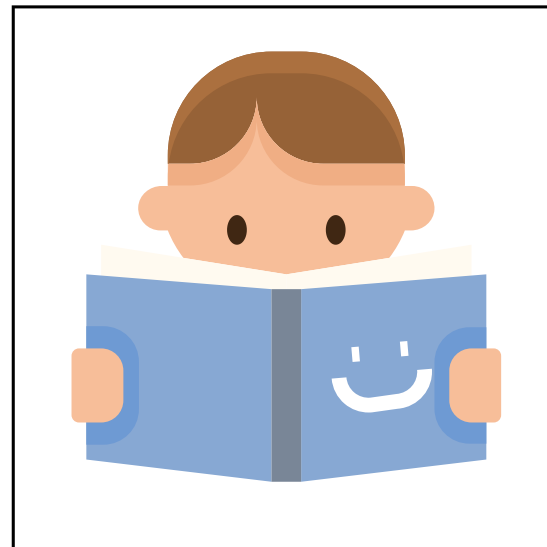
Blank light blue rectangular box for writing the verb.

Two horizontal dashed lines for writing a sentence.



Blank light blue rectangular box for writing the verb.

Two horizontal dashed lines for writing a sentence.



# VERBOS

OBSERVA EL DIBUJO. ESCRIBE EL VERBO QUE LE CORRESPONDE E INVENTA UNA FRASE.

Blank light blue rectangular box for writing the verb.

Two horizontal dashed lines for writing a sentence.



Blank light blue rectangular box for writing the verb.

Two horizontal dashed lines for writing a sentence.



Blank light blue rectangular box for writing the verb.

Two horizontal dashed lines for writing a sentence.

