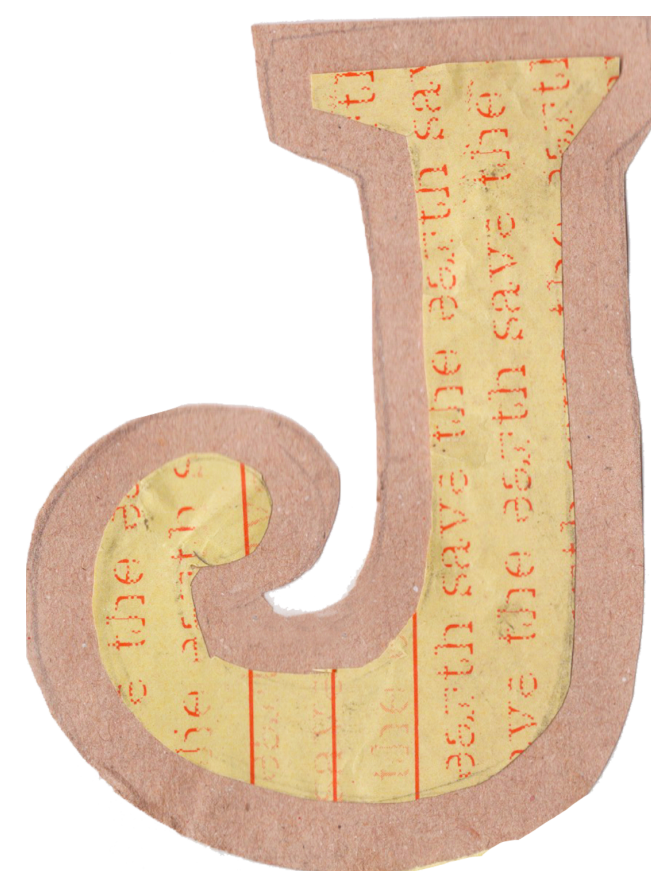
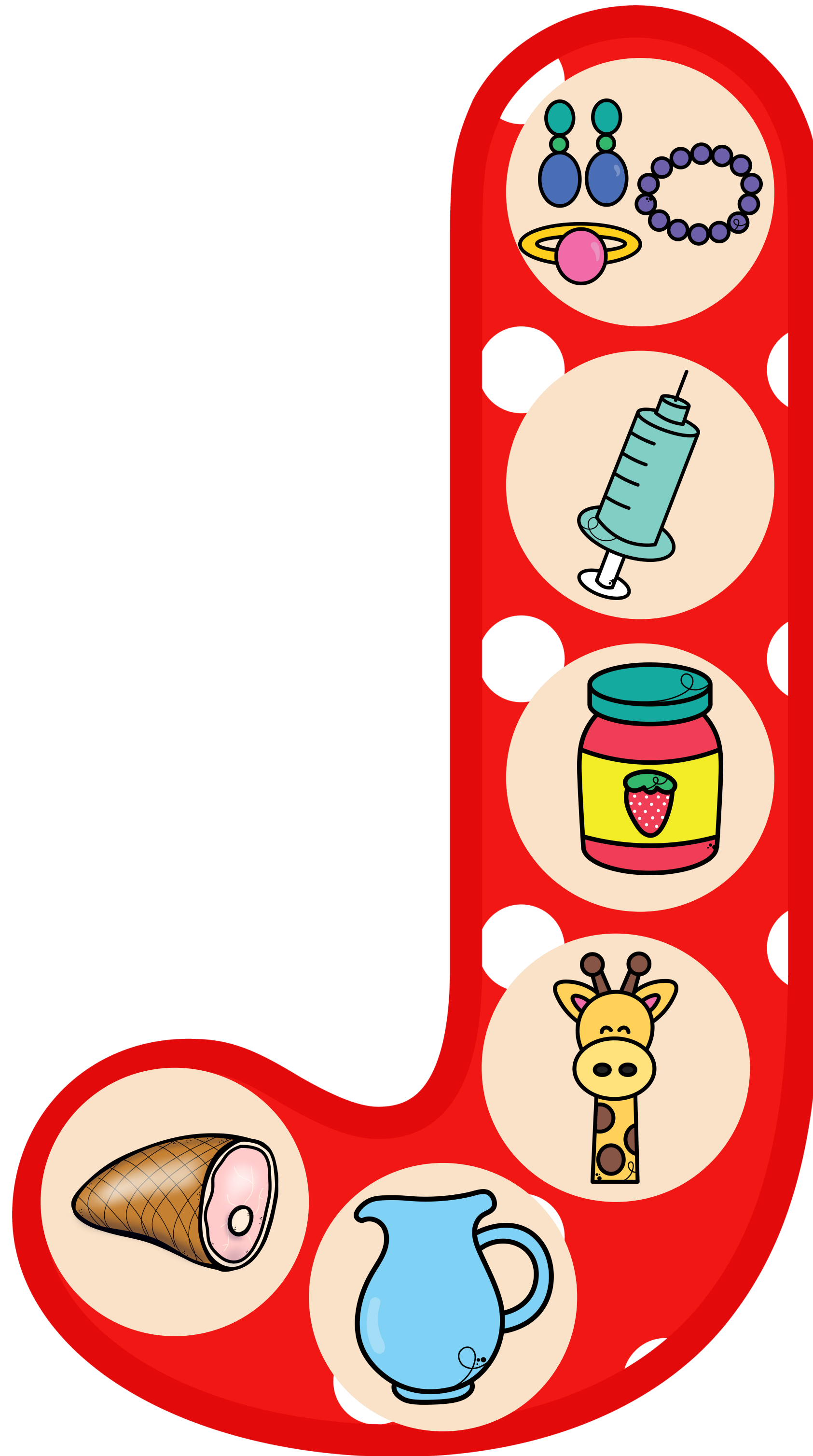




La **J**ocosa

letra

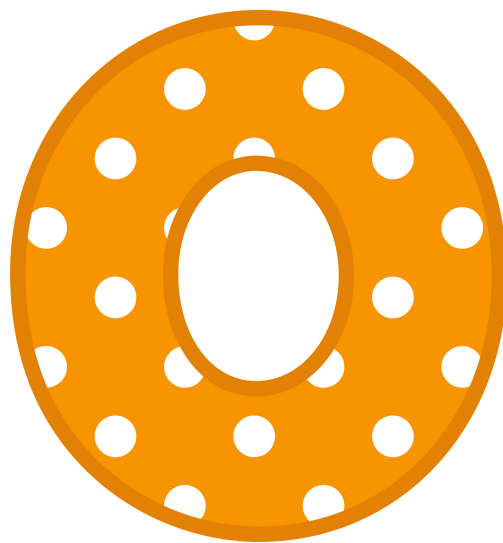
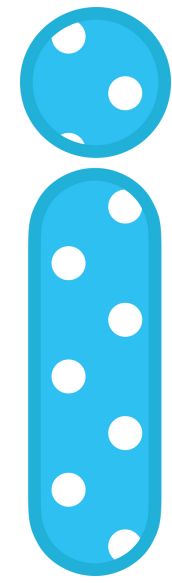
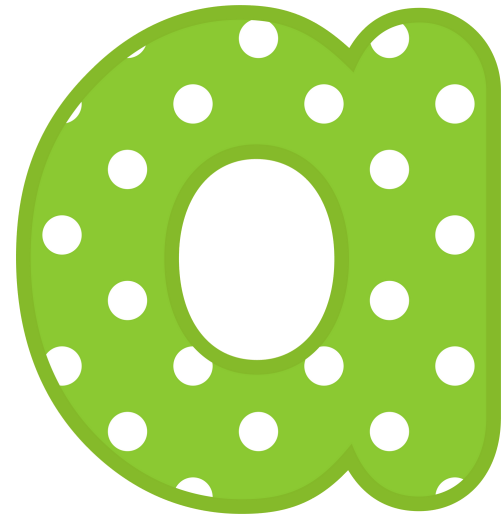
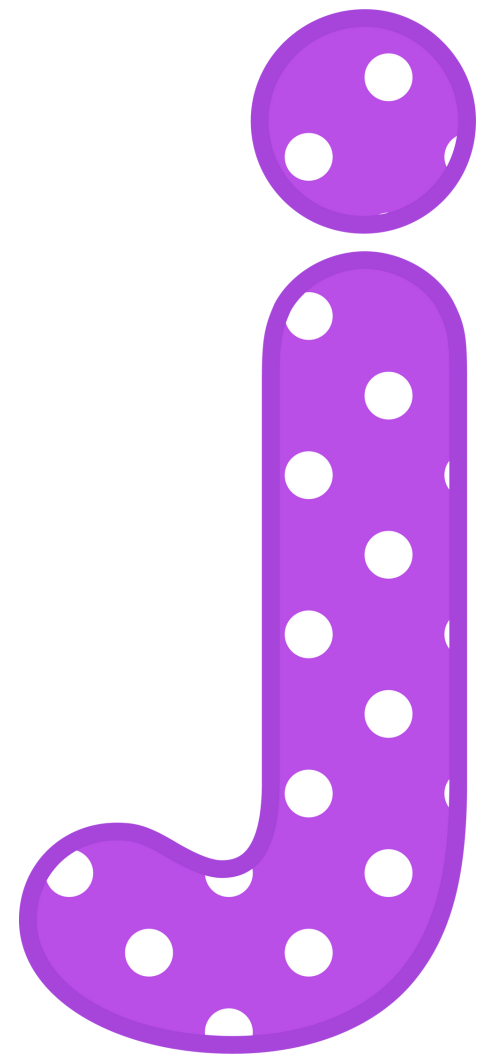




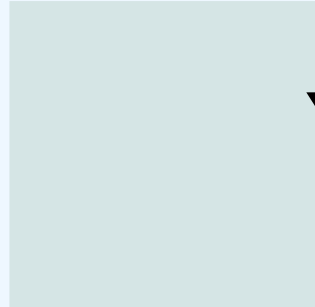
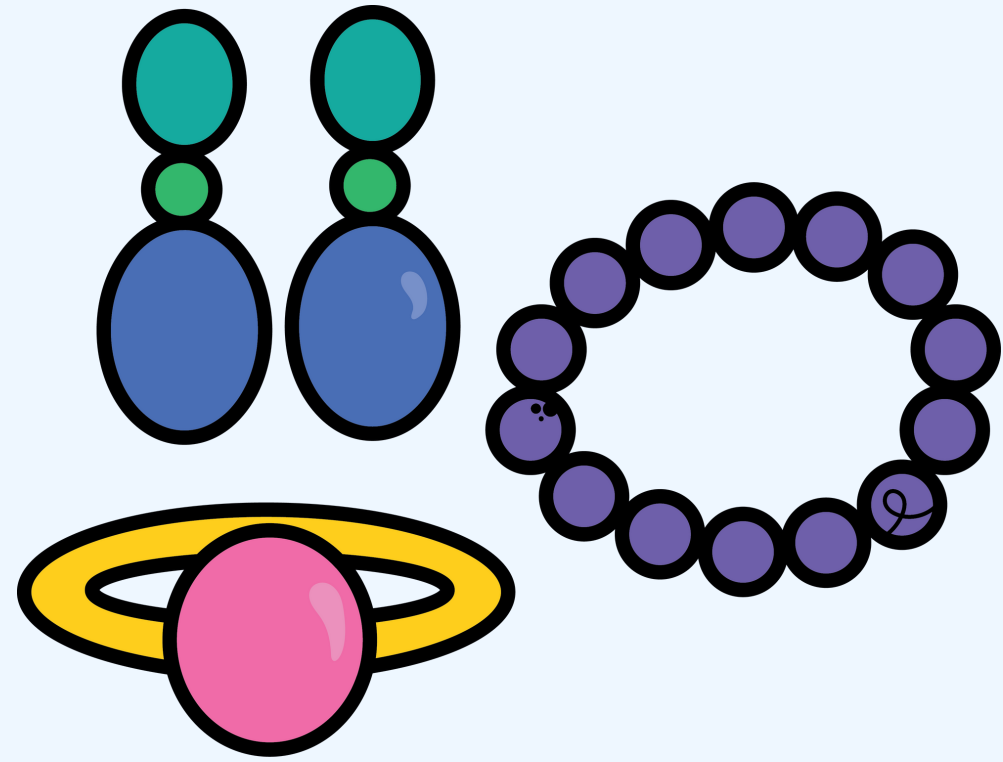
Busca las letras J. Rodea con rojo las mayúsculas y con verde, las minúsculas



Forma las sílabas



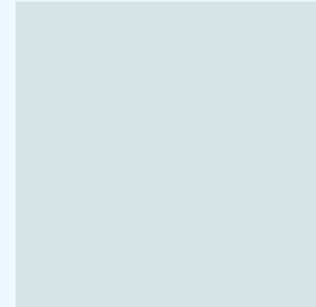
Completa



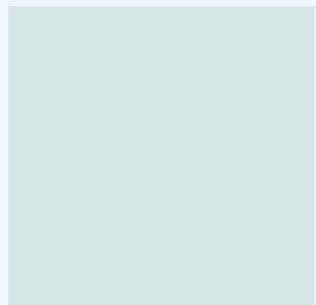
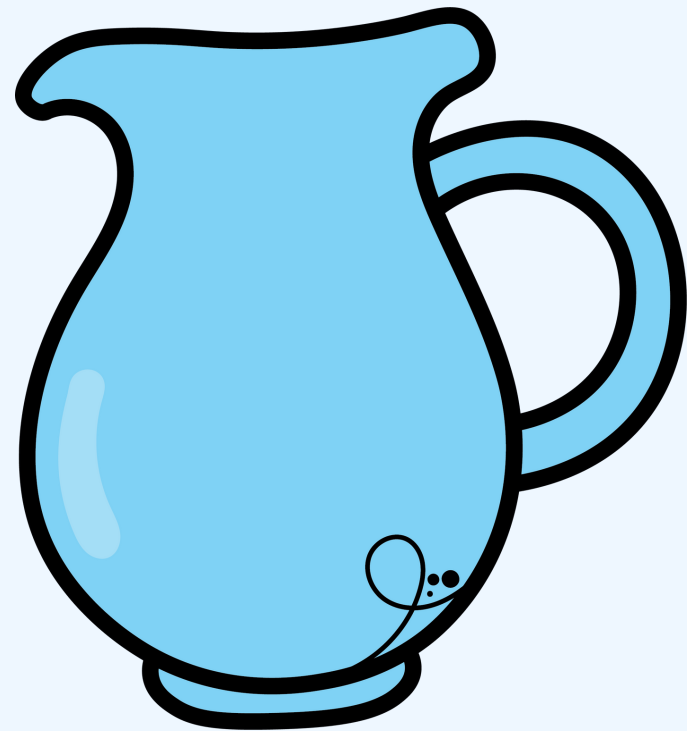
YAS



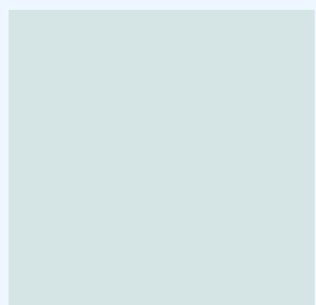
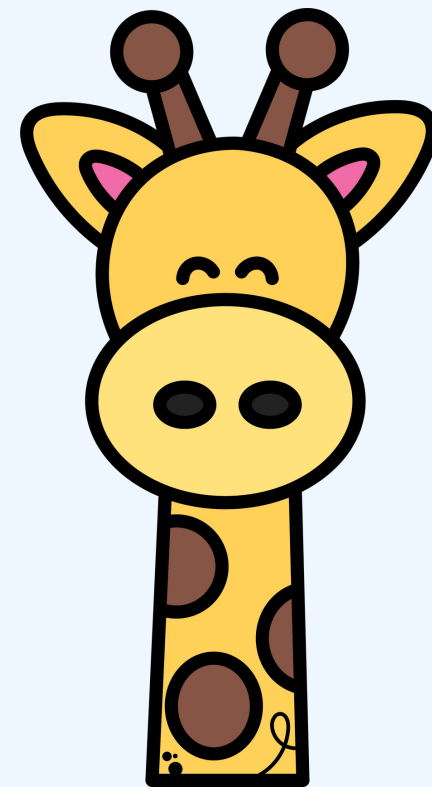
RINGUILLA



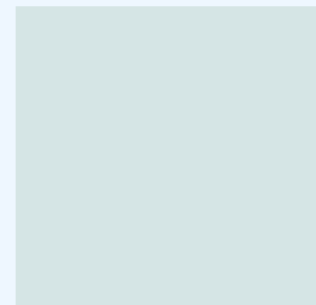
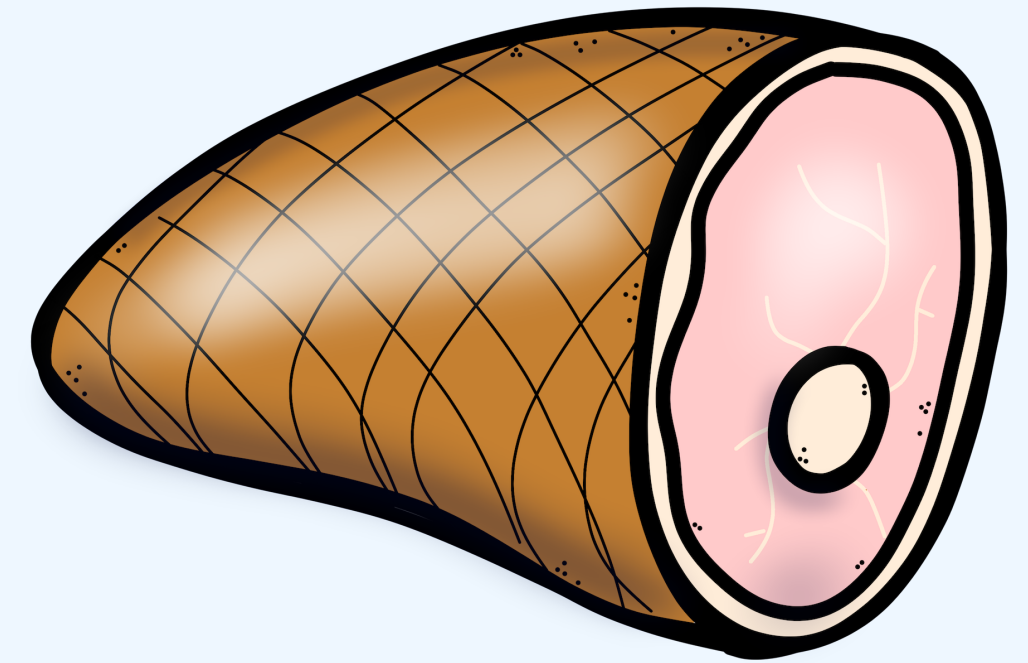
LEA



RRA

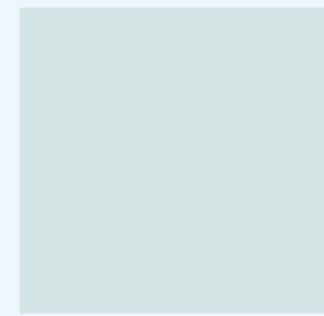
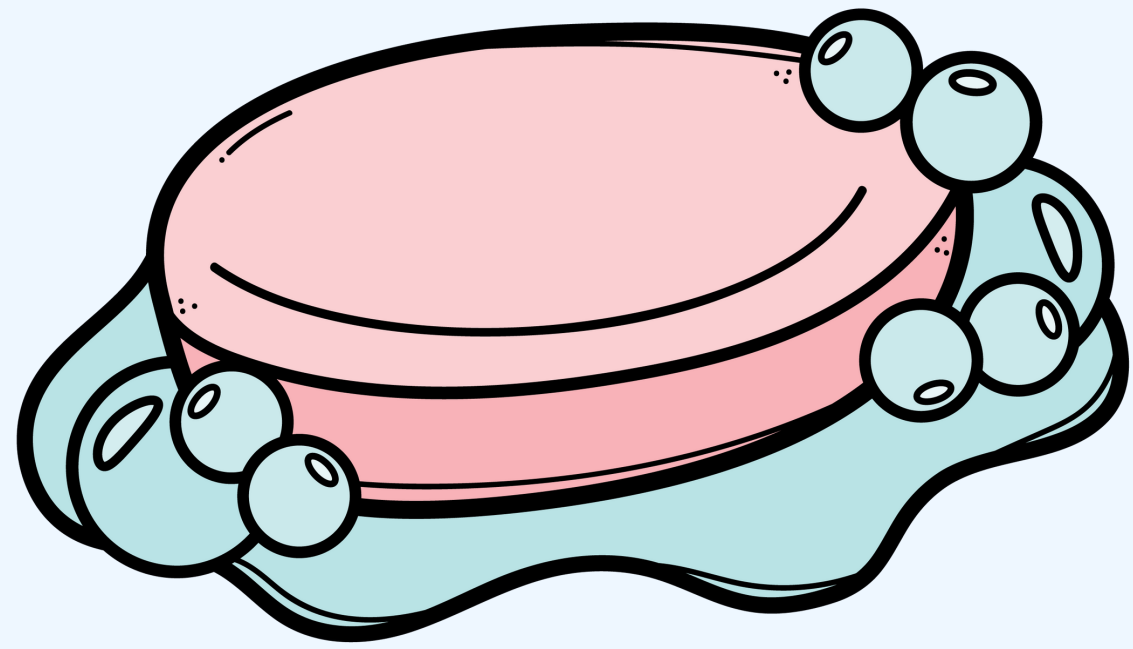


RAFA

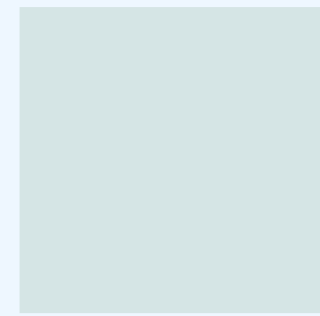
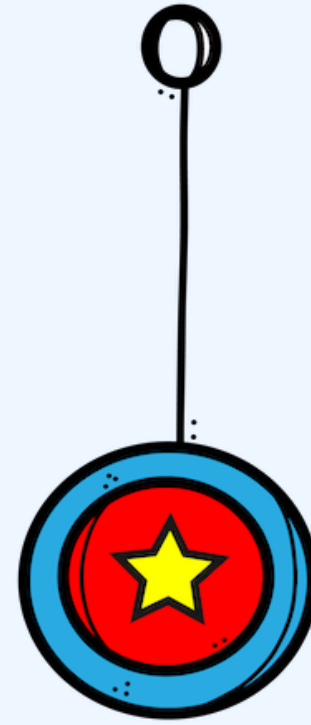


MÓN

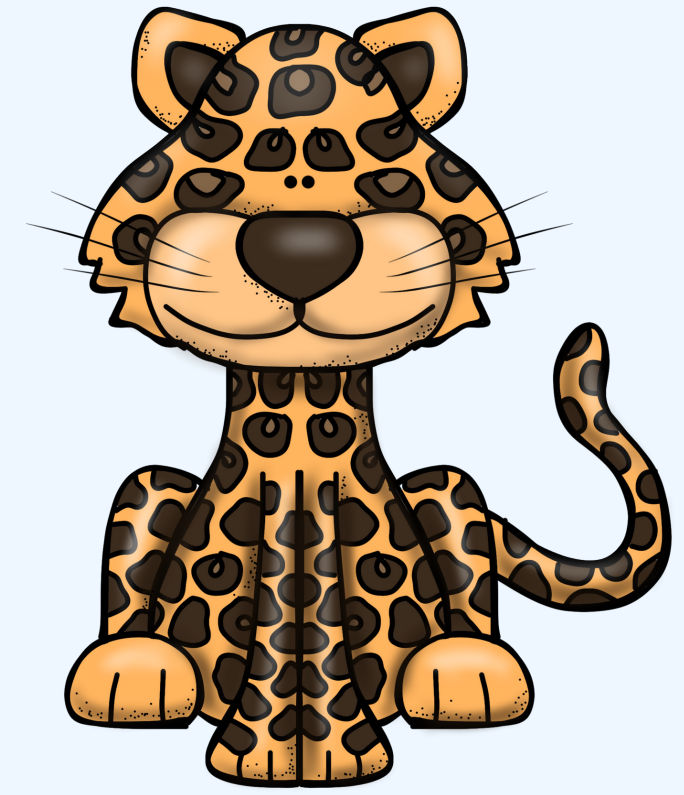
Completa



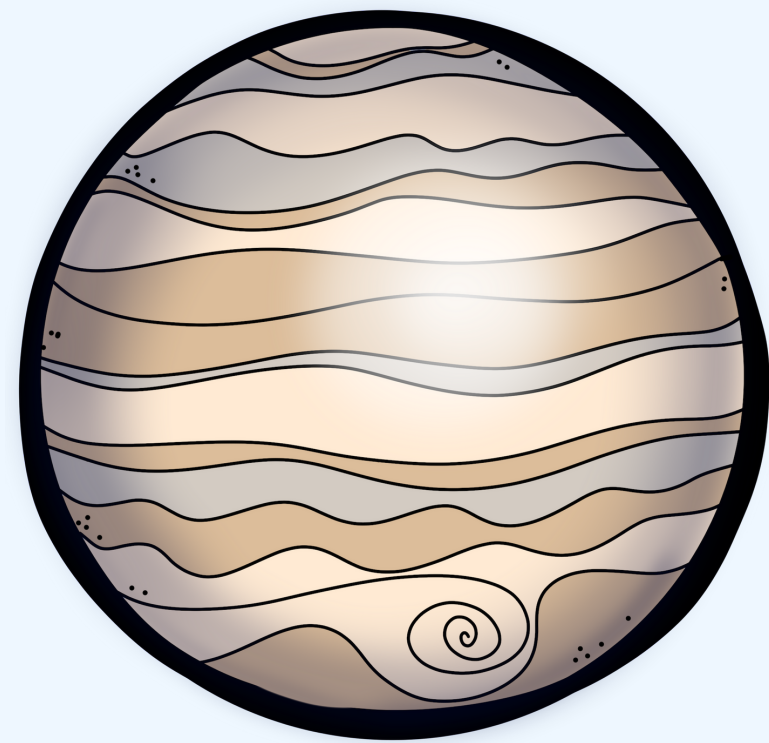
BÓN



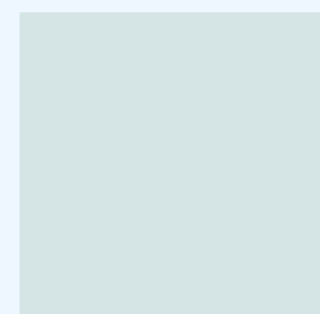
GUETE



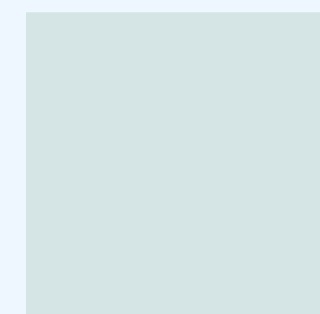
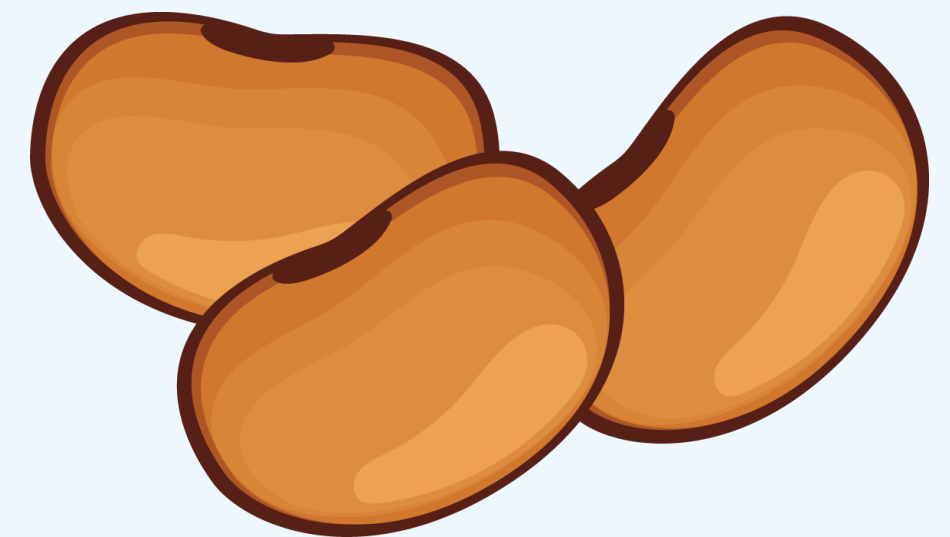
GUAR



PITER

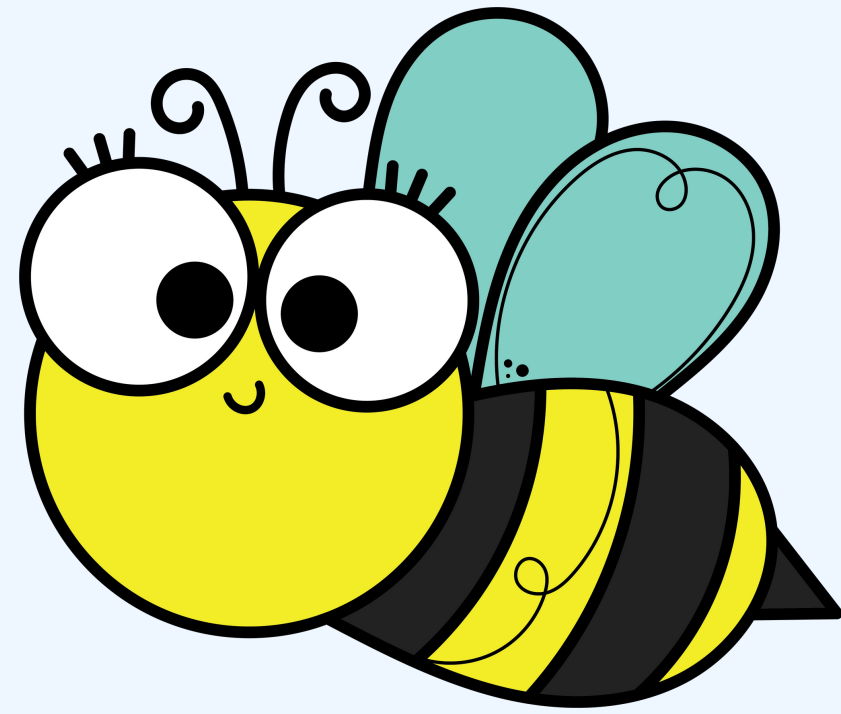


RABE

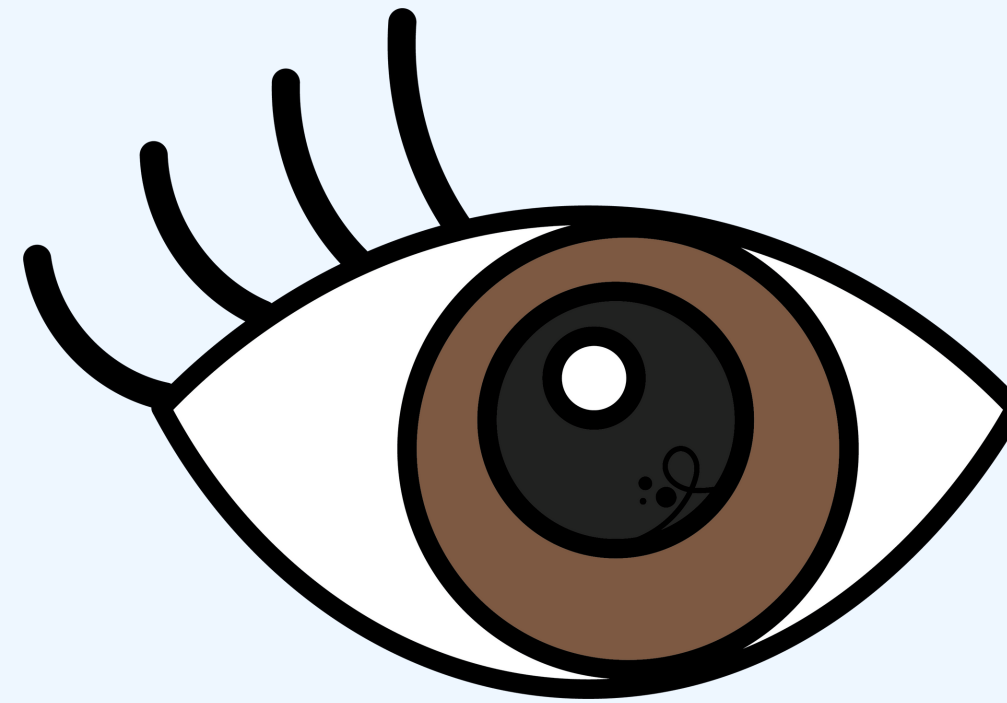


DÍAS

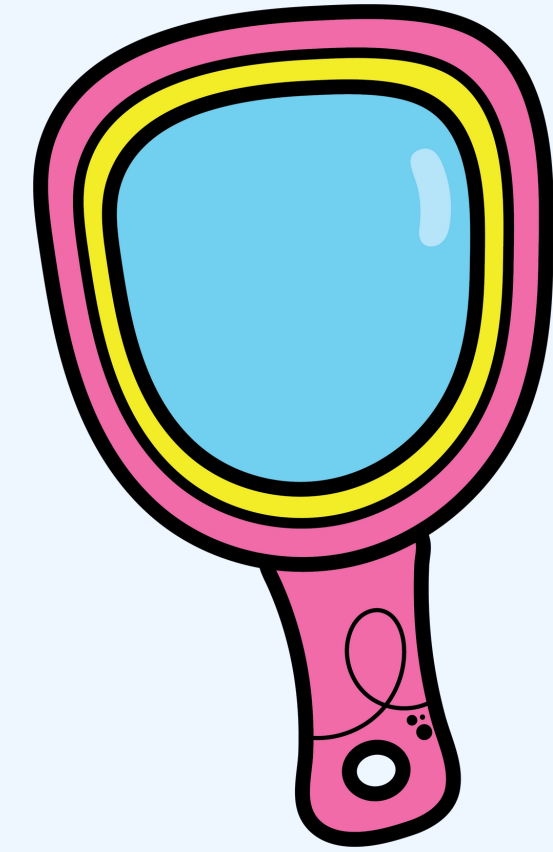
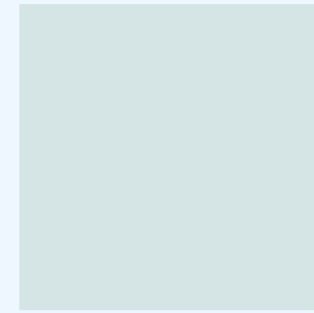
Completa



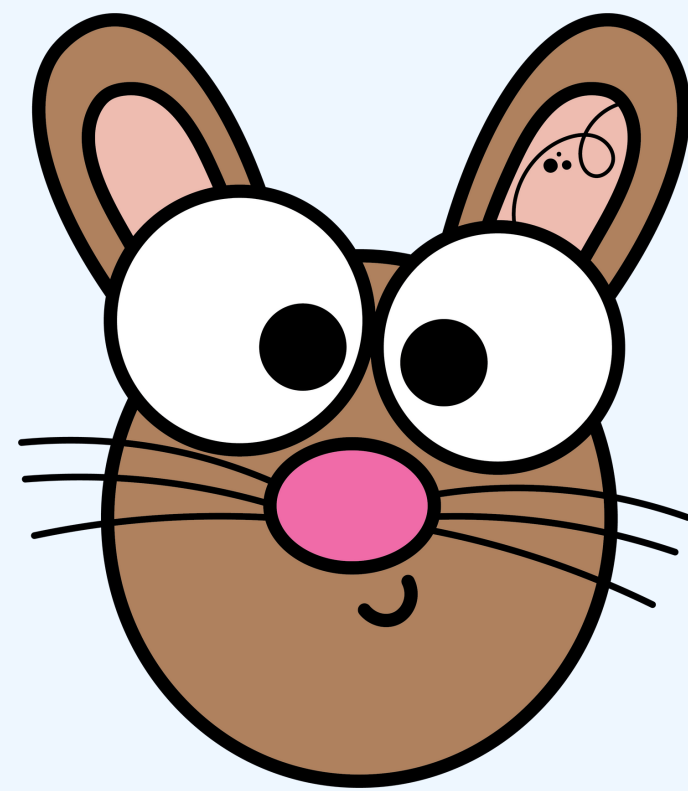
ABE



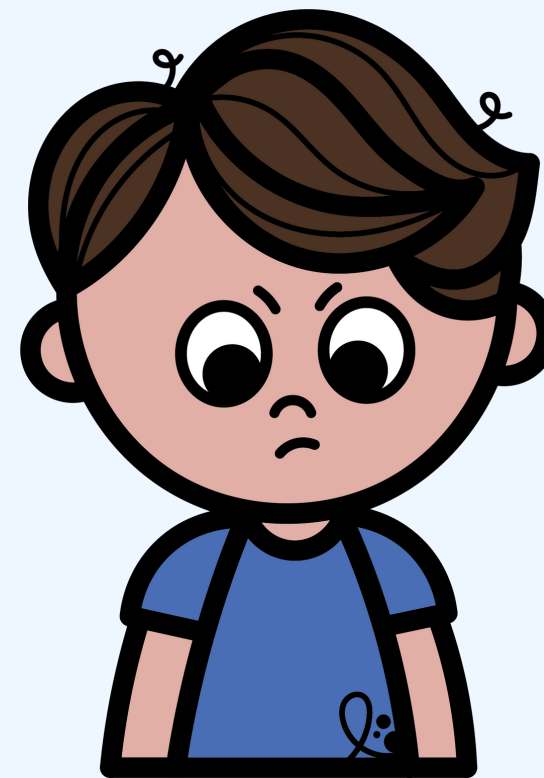
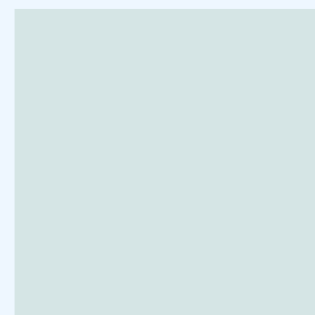
O



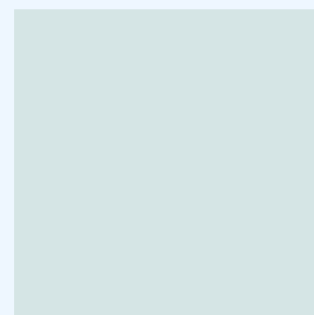
ESPE



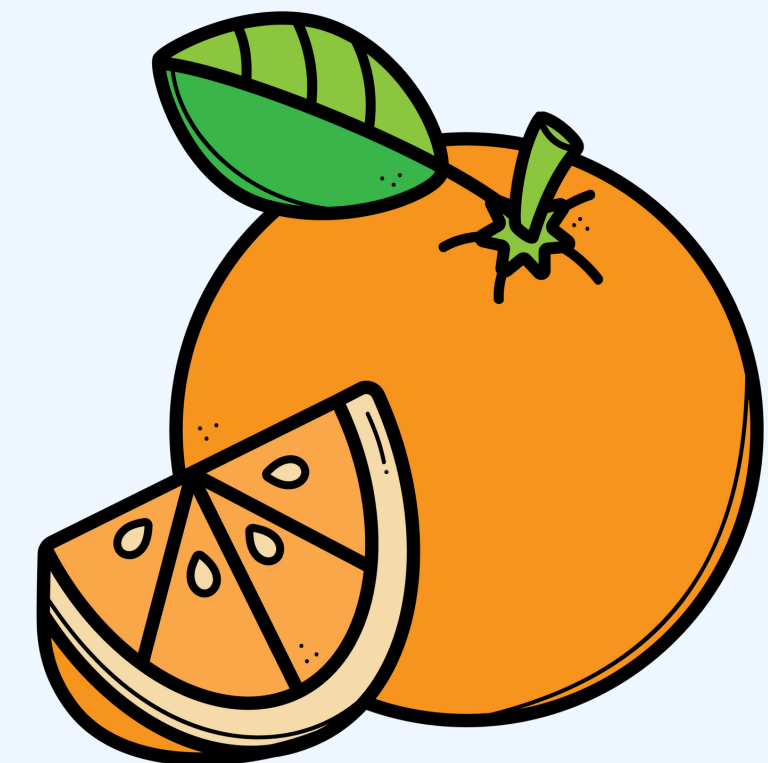
CONE



ENO



DO



NARAN

