



CONCIENCIA FONOLÓGICA

Vocal inicial



e

o

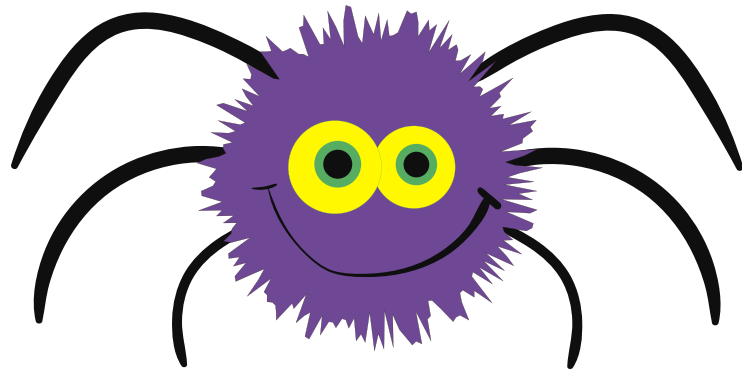
a



a

i

u



o

e

a



i

u

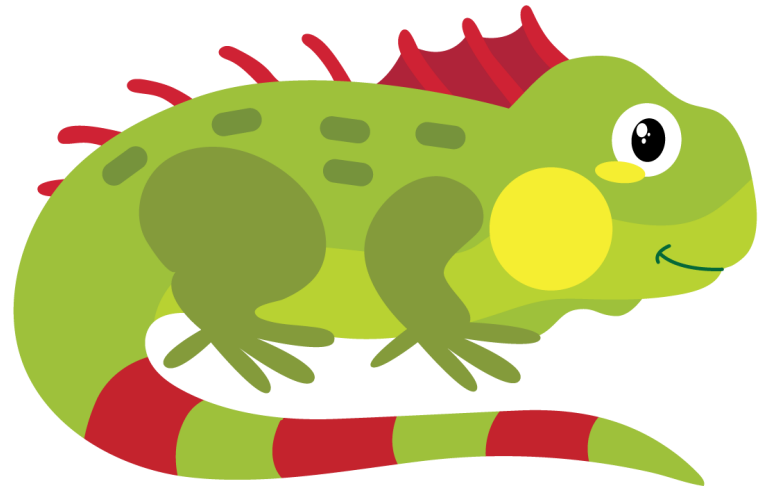
e



o

a

i



u

e

i



a

e

i



a

u

o



o

i

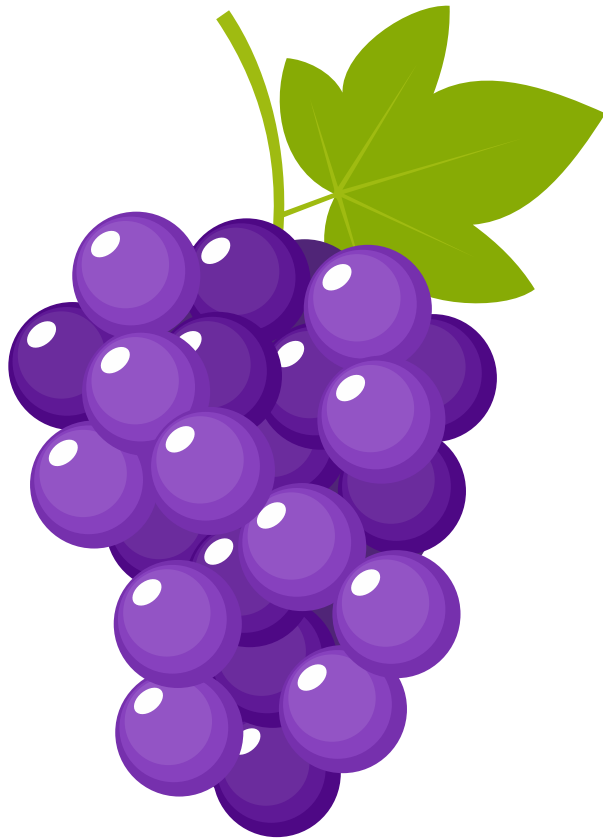
a



u

a

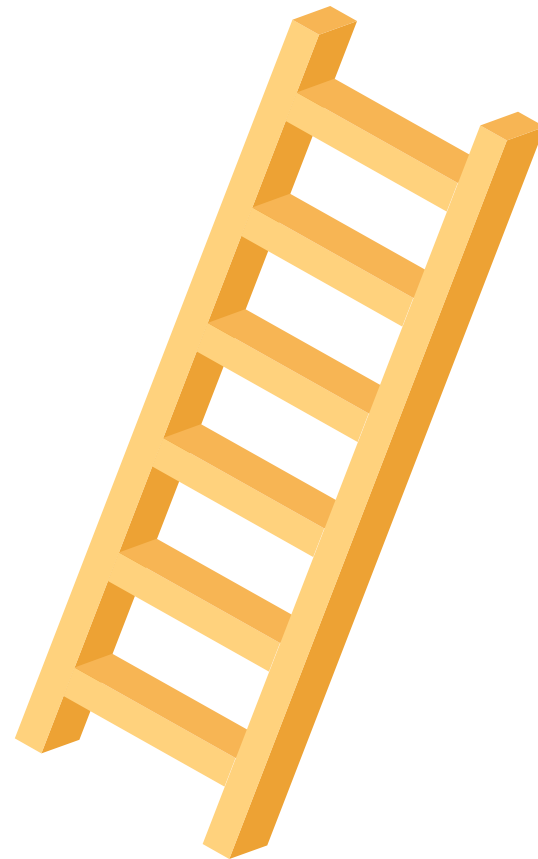
e



e

i

u



a

o

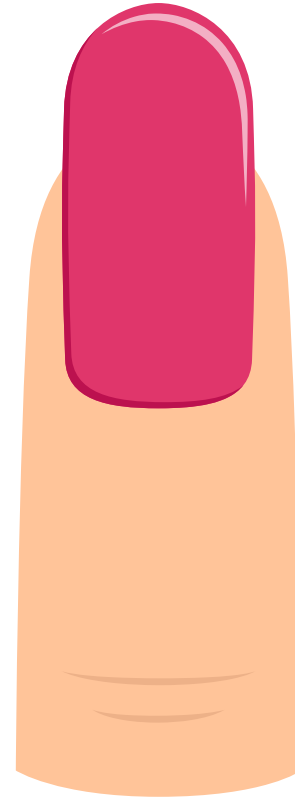
e



e

a

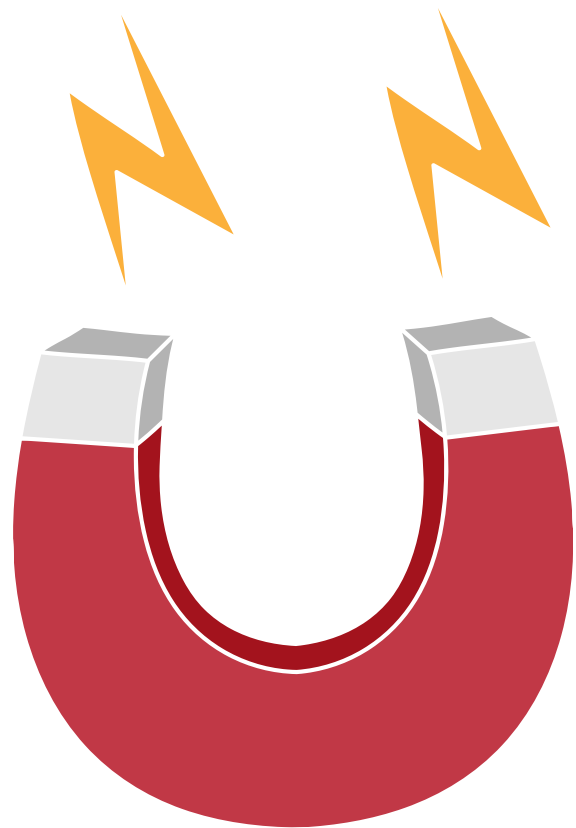
o



u

i

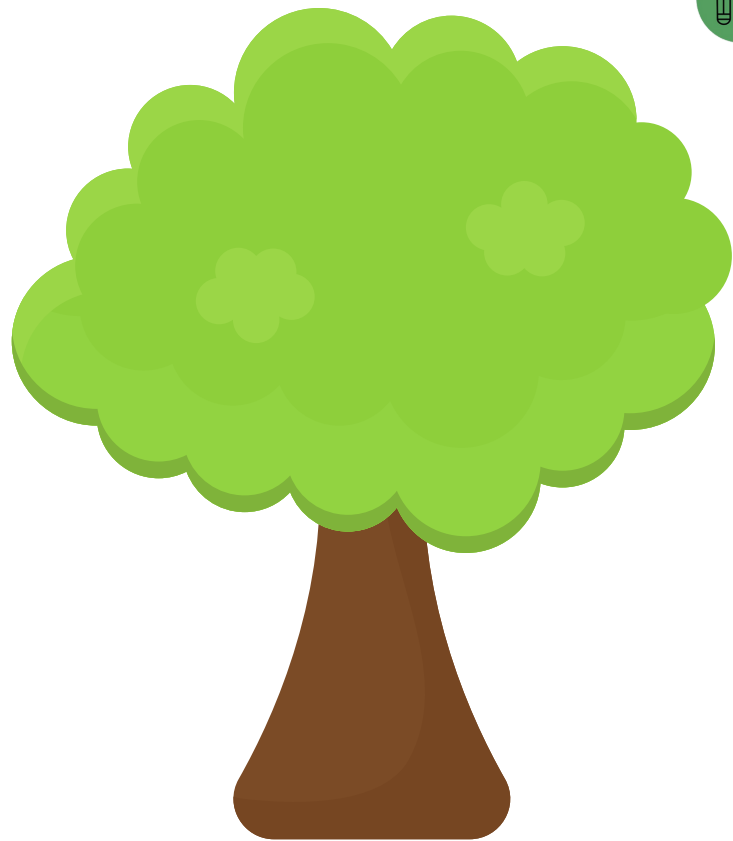
a



o

i

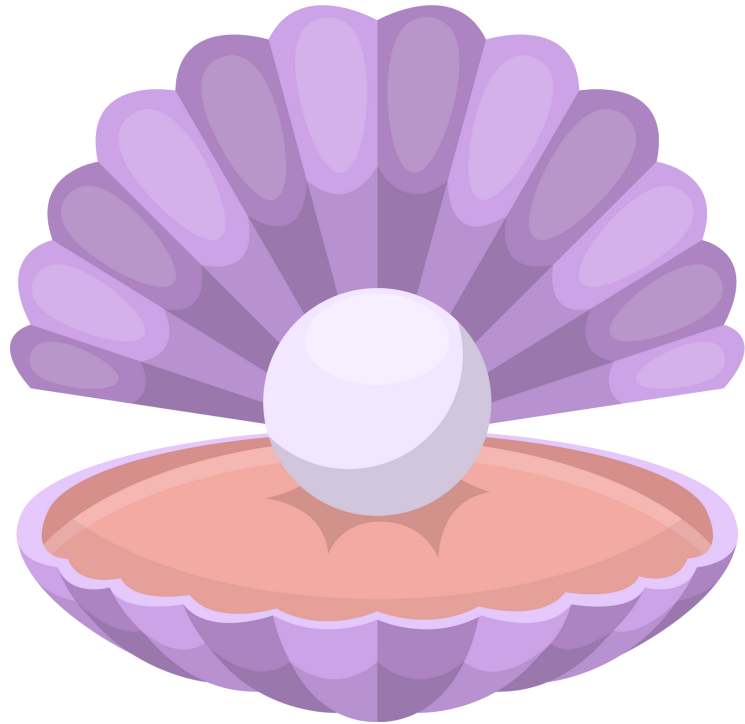
e



i

a

u



e

a

o



a

i

u



i

o

a



o

u

e