



IMÁGENES DE CANVA

Dados

Forma-palabras



@AULA_PT



@FONO.GRAFIA02

LO



©AULA_PT ©FONO.GRAFIA02



RO

TA

GA

SA

NO

RE

CO

CA

TO

MA

TE



©AULA_PT ©FONOGRAFIA02



CI



©AULA_PT ©FONOGRAFIA02



RI

MI

LE

RA

SO

PO

FO

DE

ME

NE

SE



©AULA_PT ©FONOGRÁFIA02



JO



©AULA_PT ©FONO.GRAFIA02



NA

QUE

DU

LLO

BO



CASA



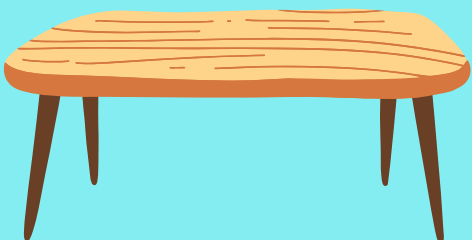
FOCA



RAMA



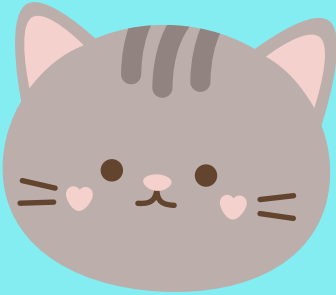
MANO



MESA



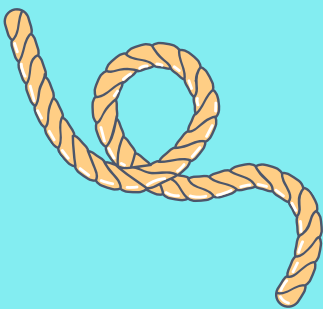
CIMA



GATO



SAPO



SOGA



TORO



QUESO



RISA



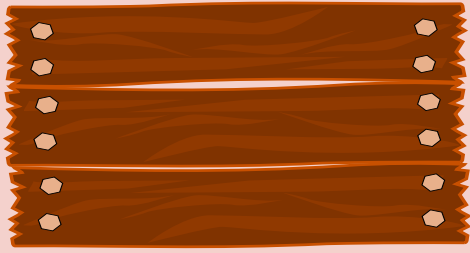
SELLO



BOTE



BOCA



MADERA



TESORO



MALETA



CONEJO



RAQUETA



CORONA



MINERO



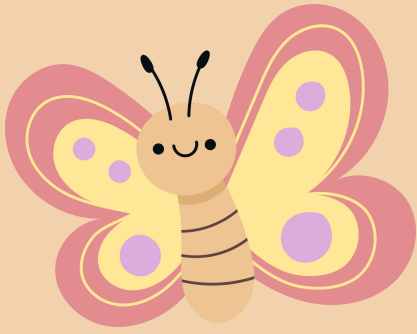
MEDUSA



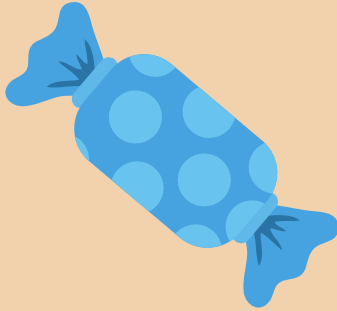
CAMELLO



COMETA



MARIPOSA



CARAMELO



TELÉFONO



COCINERO



CAMISETA



MARINERO



REGADERA



CAJONERA