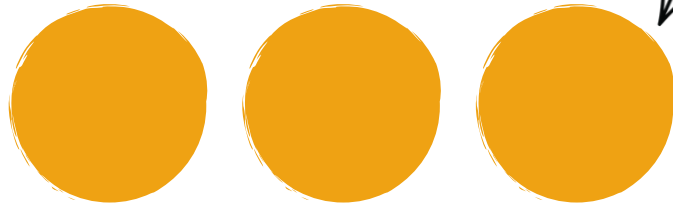




Tacha La sílaba



MA



Tacha La sílaba



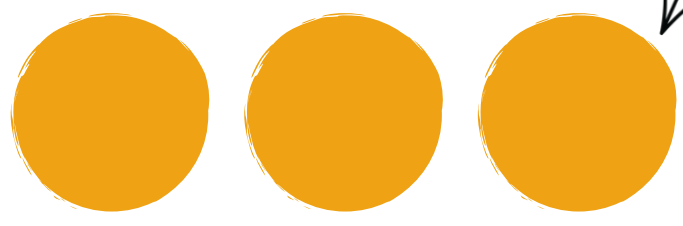
LA





Tacha La sílaba

LL O



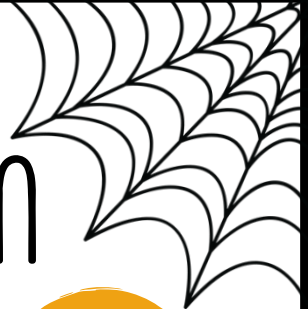
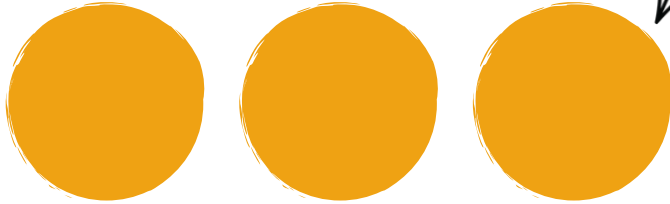
Tacha La sílaba

LA



Tacha La sílaba

VAM



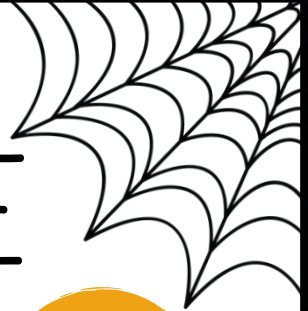
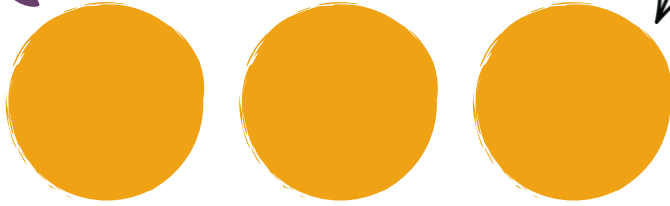
Tacha La sílaba

ra



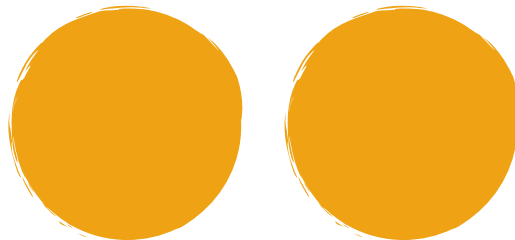
Tacha La sílaba

bre

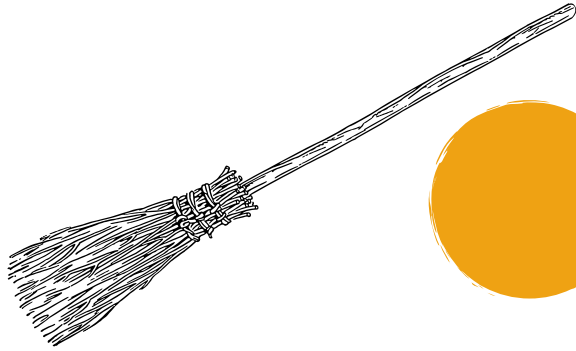


Tacha La sílaba

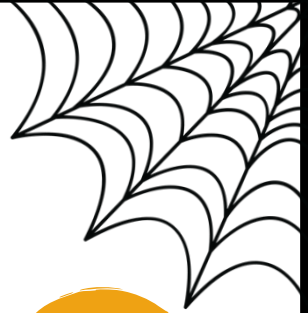
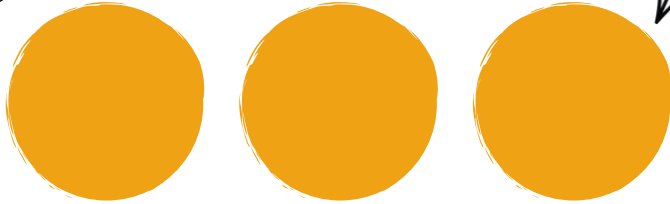
ga



Tacha La sílaba



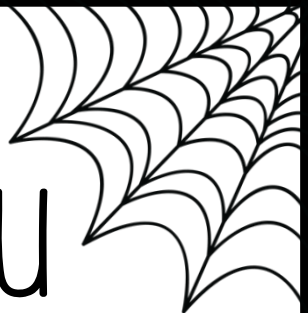
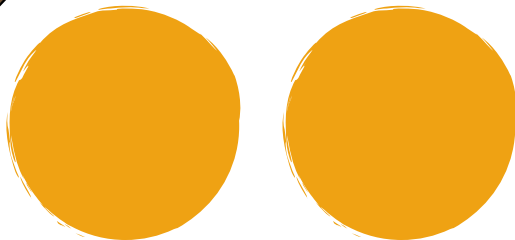
CO



Tacha La sílaba

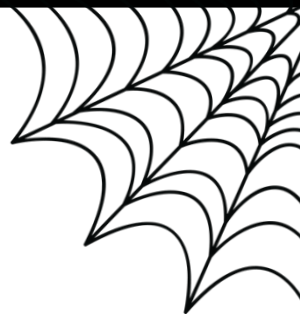
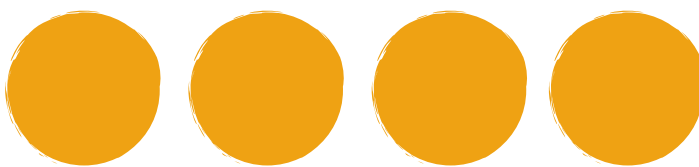


BRU



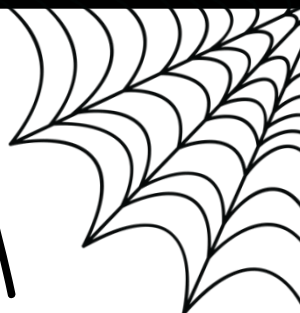
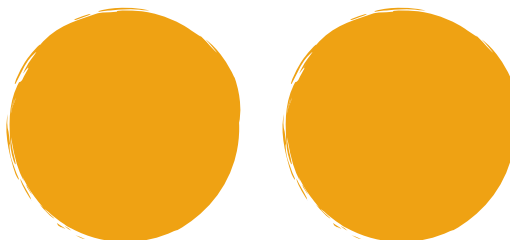
Tacha La sílaba

VE



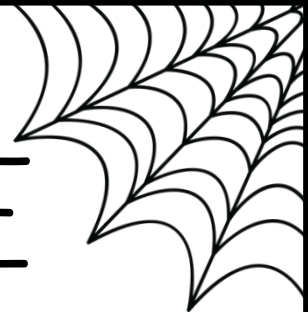
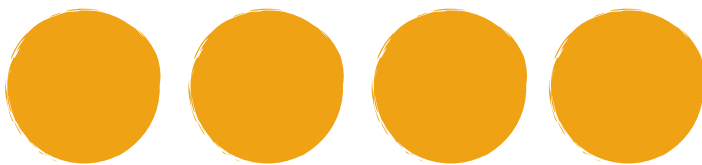
Tacha La sílaba

BA



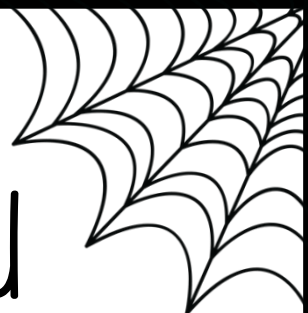
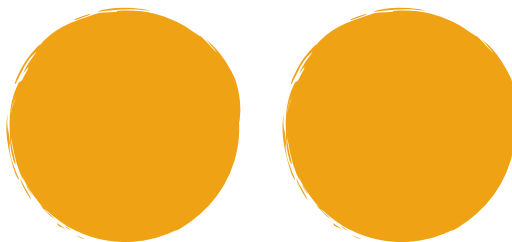
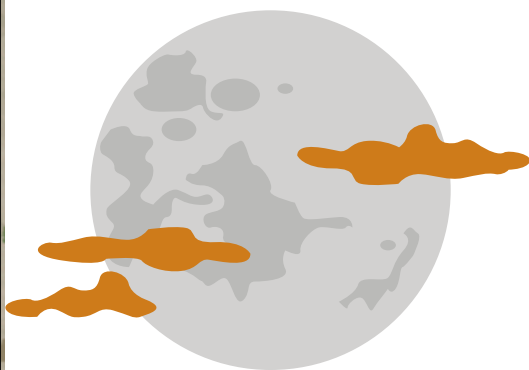
Tacha La sílaba

QUE

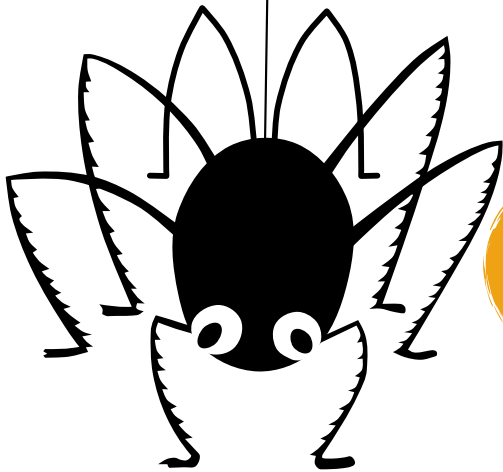


Tacha La sílaba

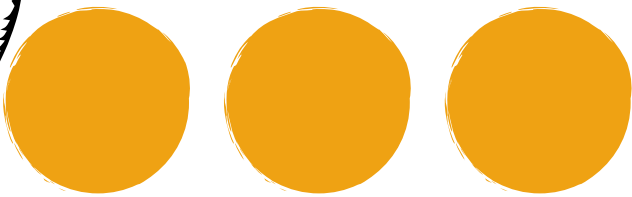
LU



Tacha La sílaba



ra



Tacha La sílaba



miA

