

UNE CON FLECHAS



SÍLABAS CON B,L,M,P,R,S,T





ba

be

bi

bo

bu





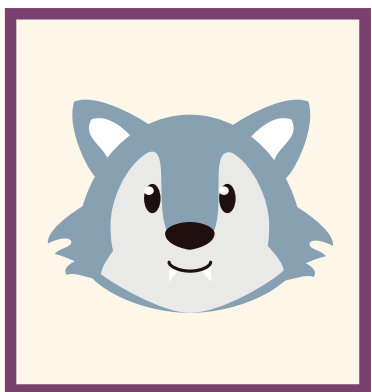
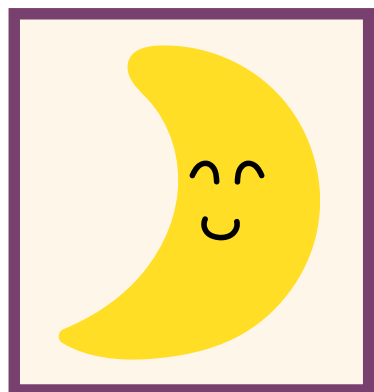
la

le

li

lo

lu





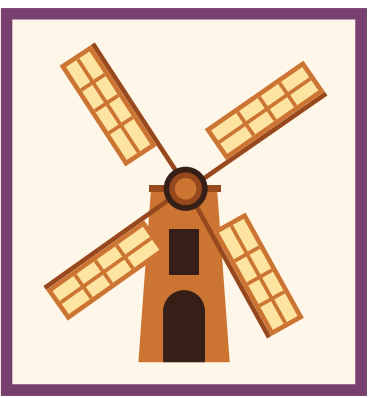
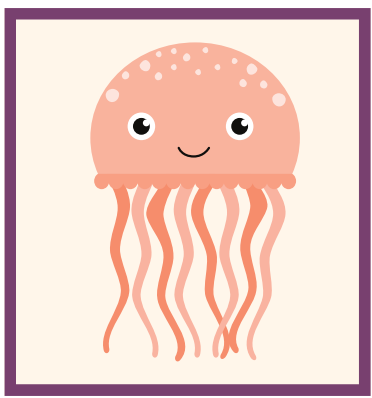
ma

me

mi

mo

mu





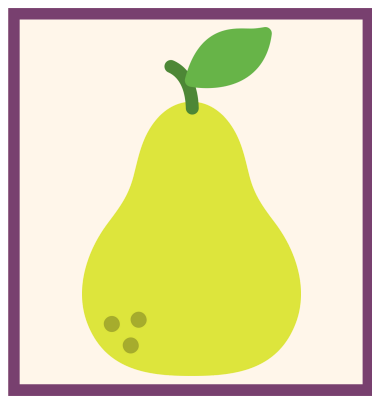
pa

pe

pi

po

pu





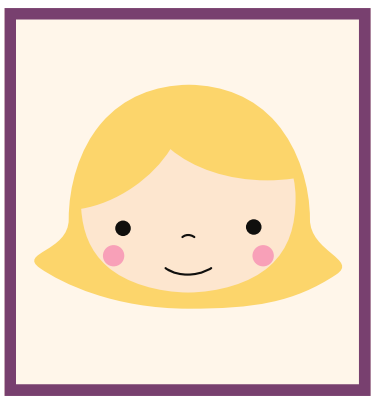
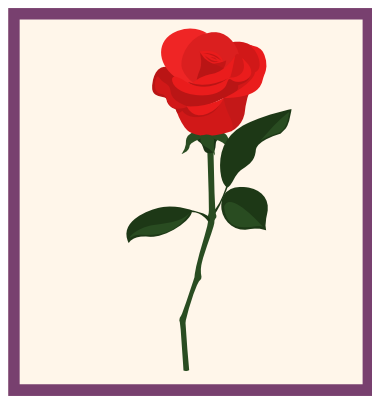
ra

re

ri

ro

ru





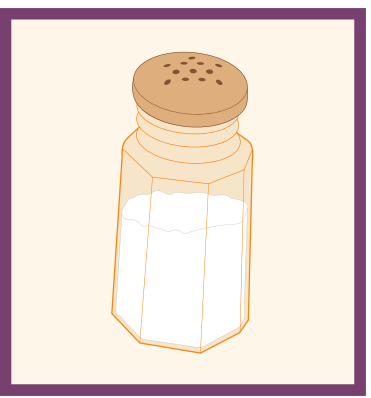
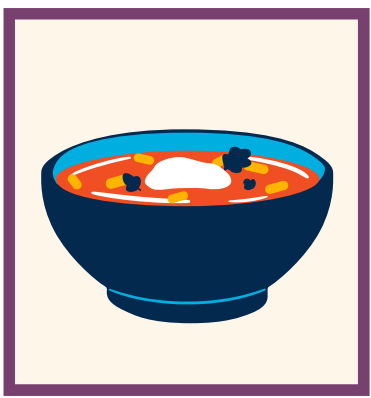
sa

se

si

so

su





ta

te

ti

to

tu

