

MURDOKUS

★ DESAFÍOS DE LÓGICA Y DEDUCCIÓN ★
3 MUNDOS • 100% DIVERSIÓN

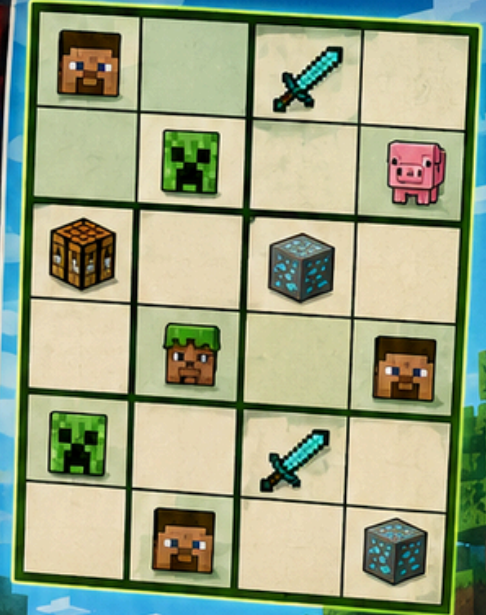
K-POP



STRANGER THINGS



MINECRAFT



A B C D E F G H
I J K L M N O P Q
R S T U V W X Y Z



¡PON A PRUEBA TU MENTE!



ANNADEENGLISH
ENGLISH TEACHER



LÓGICA



DEDUCCIÓN



DIVERSIÓN





WHERE IS WILL KIDNAPPED?

The Demogorgon has taken Will to a place on the map.

Look at the clues and find the only place where he can be.

Only one square is correct. Which one?

SUSPECTS

 MAX She sees many trees in the middle of the map.	 MIKE He is not in a place with any car.	 ELEVEN He is not in the same column as the statue.	 DUSTIN He is not in a place next to the dark forest.	 LUCAS He is not in the picnic area or in the car row.
---	--	---	---	--

HOW TO READ THE MAP

Use the coordinates to find a place.
Example: C-4



CAN BE HERE

- Path
- Bench
- Lamp
- Tree

CANNOT BE HERE

- Building
- Wall
- Car
- Water

WILL

I know I am in a place where there are no cars and no buildings.



	A	B	C	D	E	F
1	Tree	Bench	LIBRARY	Tree	Tree	Tree
2	Lamp	BYERS HOUSE	Tree	FOUNTAIN	Tree	Tree
3	Tree	PLAYGROUND	Tree	Tree	BIKE PARKING	Tree
4	LAKE	Tree	PICNIC AREA	Tree	Tree	Tree
5	Tree	Tree	STATUE	Tree	WHEELER HOUSE	Tree
6	Tree	Building	Car	Tree	DARK FOREST	Tree

DEDUCTION TABLE

	A	B	C	D	E	F
1						
2						
3						
4						
5						
6						

Use the clues to find the only possible square where Will is.

WHERE IS WILL KIDNAPPED?

-

= Can be here
 = Cannot be here

CLUES

- 1 He is near Wheeler house or the bike parking.
- 2 He is not in the same column as the playground.
- 3 He is not in row 1, row 2 or row 6.
- 4 He is in the left half of the map.
- 5 He is not in the same row as the lake.
- 6 There are more trees around benches or lamps.
- 7 He is not near playgrounds, fountains or statues.
- 8 He is in the row with the fewest paths.
- 9 He is very close to the library or the statue.
- 10 He is in a place where there are paths around.

THE MYSTERY OF THE MISSING DIAMOND

In the Minecraft village, a very valuable diamond disappeared from the village chest. Everyone says they did not take it, but one of the villagers is hiding it.



SUSPECTS

STEVE



He likes mining and building. He always has a pickaxe.

ALEX



She takes care of the animals on the farm. She is very kind.

FRIENDLY CREEPER



He is a creeper, but he is friendly. He likes animals and nature.

VILLAGER



He trades with people in the village every day.

EXPLORER



He loves exploring new places and finding hidden things.

PLACES

MINE



FARM



VILLAGE CHEST



VILLAGE HOUSE



RIVER



CLUES

- Steve was not in the river or on the farm.
- Alex was near the crops.
- The friendly creeper was not near the chest in the house.
- The explorer was in the river.
- The person in the village house was hiding the diamond.
- Alex could not hide the diamond because she was helping on the farm.
- Steve was watching the village chest.
- The friendly creeper was in the mine.
- The guilty person was not near the water.
- Only one person was in the village house.



DEDUCTION TABLE

SUSPECTS	MINE	FARM	VILLAGE CHEST	VILLAGE HOUSE	RIVER
STEVE					
ALEX					
FRIENDLY CREEPER					
VILLAGER					
EXPLORER					

WHERE WAS EACH ONE?



Use the clues to find out where each suspect was and solve the mystery of the missing diamond.



THE MYSTERY OF THE NETHER PORTAL

Someone activated the Nether portal without permission and disappeared. Five friends were together, but only one of them had the chance to do it.

SUSPECTS

STEVE



He likes mining and building. He always has a pickaxe.

ALEX



She takes care of animals on the farm. She is very kind.

CREEPER



He is a creeper, but he is friendly. He likes animals and nature.

VILLAGER



He trades with people in the village every day.

EXPLORER



He loves exploring new places and finding hidden things.

PLACES

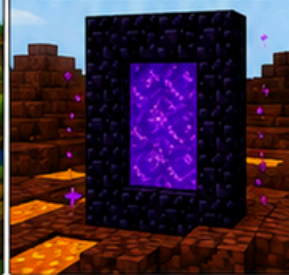
MINE



FARM



NETHER PORTAL



VILLAGE HOUSE



RIVER



CLUES

- 1 Steve and Alex were together for a while.
- 2 Alex was helping on the farm.
- 3 The person by the river was not the one who activated the portal.
- 4 The explorer was near the water looking for something.
- 5 Steve was not in the river or near the portal.
- 6 Steve was mining because he was looking for iron.
- 7 The villager was inside his house.
- 8 The person who activated the portal was alone.
- 9 The person in the mine was helping Alex later.
- 10 Near the portal, some small dirt blocks were removed and a strange green trail was found.

DEDUCTION TABLE

SUSPECTS	MINE	FARM	NETHER PORTAL	VILLAGE HOUSE	RIVER
STEVE					
ALEX					
CREEPER					
VILLAGER					
EXPLORER					

WHERE WAS EVERYONE?

Use the clues to find out where each suspect was and discover who activated the Nether portal.



THE MYSTERY OF THE ENCHANTED SWORD



In the Minecraft village, the enchanted sword disappeared from the blacksmith. Five friends were in different places, but only one of them took it.

SUSPECTS

STEVE



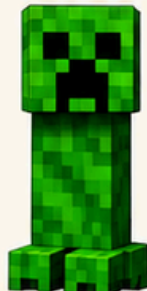
He likes mining and building. He always has a pickaxe.

ALEX



She takes care of animals on the farm. She is very kind.

FRIENDLY CREEPER



He is a creeper, but he is friendly. He likes animals and nature.

VILLAGER



He trades with people in the village every day.

EXPLORER



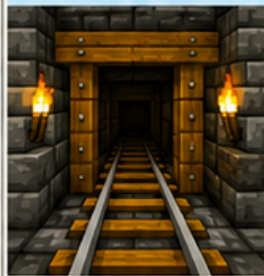
He loves exploring new places and finding hidden things.

PLACES

BLACKSMITH



MINE



LIBRARY



FOREST



RIVER



CLUES

- Steve was in the library looking for an enchantment book.
- Alex was on the farm in the morning.
- The explorer crossed the river to look for treasures.
- The creeper wasn't in the forest.
- The villager was in the village market.
- The sword was not in the chest in the blacksmith.
- The person who took it was in the library.
- The villager wasn't in the mine.
- The explorer wasn't in the forest.
- Only one person was in the library.



DEDUCTION TABLE

SUSPECTS	BLACKSMITH	MINE	LIBRARY	FOREST	RIVER
STEVE					
ALEX					
FRIENDLY CREEPER					
VILLAGER					
EXPLORER					

WHERE WAS EACH ONE?



Use the clues to find out where each suspect was and solve the mystery of the enchanted sword.



In the Minecraft village, a treasure map has disappeared from the chest in the house of the Five Friends. They were in different places, but only one of them took the map.

THE MYSTERY OF THE TREASURE MAP



SUSPECTS

STEVE



He likes mining and building. He always has a pickaxe.

ALEX



She takes care of the animals in the farm. She is very kind.

FRIENDLY CREEPER



He is a creeper, but he is friendly. He likes animals and nature.

VILLAGER



He trades with people in the market every day.

EXPLORER



He loves exploring new places and finding hidden things.

PLACES

LIBRARY



FARM



MINE



FOREST



RIVER



CLUES

- Steve was in the mine looking for coal.
- The explorer was near the river following footprints.
- The villager was in the market.
- The creeper was in the farm looking at the animals.
- The map disappeared from the chest in the house.
- The person who took the map was in the library.
- Alex was not in the mine.
- The villager was not in the forest.
- The explorer was not in the forest.
- Only one person was in the library.



DEDUCTION TABLE

SUSPECTS	LIBRARY	FARM	MINE	FOREST	RIVER
STEVE					
ALEX					
FRIENDLY CREEPER					
VILLAGER					
EXPLORER					

WHERE WAS EACH ONE?



Use the clues to find in which place each suspect was and discover who took the map.



WHERE IS THE VILLAGE DIAMOND HIDDEN?

The special diamond of the village is hidden. It is inside one of the buildings in the village. It is not in the same place as the others. Read the clues carefully and discover where it is. Only one box is correct. Can you find the guilty one?

HOW TO READ THE MAP

Use the coordinates to find places on the map.
Example: C-4

A B C D E F

1					
2					
3					
4					
5					
6					

CAN BE HERE



CANNOT BE HERE



STEVE
He was mining early in the morning.

ALEX
She was taking care of the animals in the farm.

FRIENDLY CREEPER
He does not like water and is friendly with animals.

VILLAGER
He stayed near the market and traded with many people.

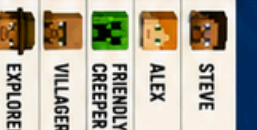
EXPLORER
He loves to explore new places and follows many paths.

SUSPECTS

- The diamond was kept in the library.
- Steve was in the library.
- Alex was in the farm.
- The creeper does not like water.
- The diamond is not in the fountain.
- The explorer was walking on a path that goes in all directions.
- The villager was near the market but did not enter any building.
- There is a lamp in the place where the diamond is hidden.
- In the mine, there is only darkness.
- The explorer stopped for a few minutes in the picnic area.

CLUES

SUSPECTS



DEDUCTION TABLE

SUSPECTS	BLACKSMITH	MARKET	FARM	LIBRARY	MINE	RIVER
STEVE						
ALEX						
FRIENDLY CREEPER						
VILLAGER						
EXPLORER						

	A	B	C	D	E	F
1	Tree	Bench	BLACKSMITH	Tree	Lamp	Bench
2	Lamp	Tree	MARKET	FOUNTAIN	Tree	Bench
3	FARM	Tree	LIBRARY	Tree	STALL	Tree
4	LAKE	Tree	PICNIC AREA	Tree	TRAINING FIELD	Tree
5	Lamp	Tree	STATUE	Tree	ELDERS HOUSE	Tree
6	MINE	Tree	Tree	Tree	Tree	Tree

WHERE IS THE VILLAGE DIAMOND?

(Column) - (Row) = (Place)

- ✓ = It can be in that place.
- ✗ = It cannot be in that place.

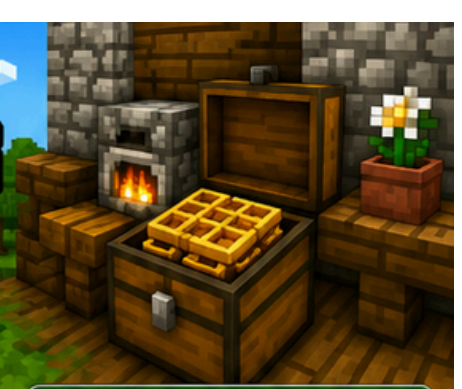
Use the clues to find out where the diamond was hidden and solve the mystery!



THE MYSTERY OF THE MISSING CHESTS



In the Minecraft village, some special chests full of honey were lost. They were hidden in five places in the village. Everyone says they didn't take them... but someone did! Can you find out who took the chests?



SUSPECTS

STEVE



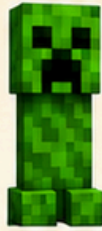
He likes to mine and build. He always carries a pickaxe.

ALEX



She is very organized and helps the villagers in the market.

FRIENDLY CREEPER



He is a creeper, but he is friendly. He loves animals and nature.

VILLAGER



He works on the farm and takes care of all the animals.

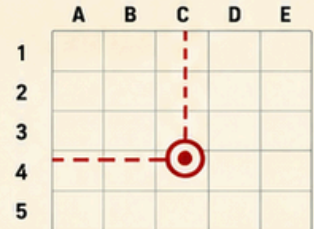
EXPLORER



He loves to explore and find treasures in hidden places.

HOW TO READ THE MAP

Use the coordinates to find places on the map. Look at the example.



Example: C-3

CAN BE HERE



CANNOT BE HERE



MAP PLACES

KITCHEN



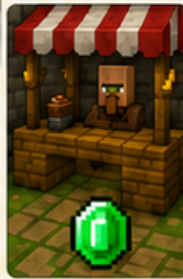
MINE



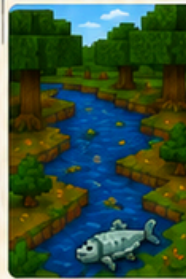
FARM



MARKET



RIVER



CLUES

- Alex saw a mouse in the kitchen early in the morning.
- The villager was working on the farm in the morning.
- The explorer crossed the river using the bridge.
- The creeper was not near water.
- The chests disappeared from the market.
- The person who took them was in the kitchen.
- The villager was not in the farm.
- Alex was not in the river.
- In the mine, there were open barrels.
- Only one person was not near the kitchen.



	A	B	C	D	E
1					
2					
3					
4					
5					

DEDUCTION TABLE

SUSPECTS	KITCHEN	MINE	FARM	MARKET	RIVER
STEVE	<input type="checkbox"/>	<input type="checkbox"/>	<input type="checkbox"/>	<input type="checkbox"/>	<input type="checkbox"/>
ALEX	<input type="checkbox"/>	<input type="checkbox"/>	<input type="checkbox"/>	<input type="checkbox"/>	<input type="checkbox"/>
FRIENDLY CREEPER	<input type="checkbox"/>	<input type="checkbox"/>	<input type="checkbox"/>	<input type="checkbox"/>	<input type="checkbox"/>
VILLAGER	<input type="checkbox"/>	<input type="checkbox"/>	<input type="checkbox"/>	<input type="checkbox"/>	<input type="checkbox"/>
EXPLORER	<input type="checkbox"/>	<input type="checkbox"/>	<input type="checkbox"/>	<input type="checkbox"/>	<input type="checkbox"/>

WHERE ARE THE CHESTS?

- -

Use the map to find the place and discover who took the chests!



THE MYSTERY OF THE MISSING EMERALDS

In the Minecraft village, some emeralds have disappeared from the market... but someone took them! Only one person is correct. Can you find out who is guilty?



SUSPECTS

<p>STEVE He is ready to mine and build. He likes to have fun.</p>	<p>ALEX She is brave and likes to explore high places and watch.</p>	<p>CREEPER He is a creeper. He does not talk. He likes to surprise animals.</p>	<p>VILLAGER He trades with everyone. He is busy with many tasks.</p>	<p>EXPLORER He is always looking for new paths and hidden places.</p>
--	---	--	---	--

CLUES

- Steve was in the forest at the watch tower in the morning.
- Alex went to the mine to look at the village.
- The explorer crossed the river using a hidden bridge.
- The creeper does not like to be near emeralds.
- The emeralds disappeared from the market.
- The person who took them was in the stable.
- The villager was working in the mine.
- Alex was not in the river or near water.
- In the market, some barrels were open.
- Only one person was not far from the market.



MAP PLACES

	A	B	C	D	E
1					
2					
3					
4					
5					

DEDUCTION TABLE

SUSPECTS	MARKET	WATCH TOWER	MINE	STABLE	RIVER
STEVE					
ALEX					
CREEPER					
VILLAGER					
EXPLORER					

WHO TOOK THE EMERALDS?

Write the correct box:

- -
 (Column) (Row) (Place)

Example: C-3



Use the clues to find out where each suspect was and solve the mystery of the missing emeralds.



- = The suspect can be in that place.
- = The suspect cannot be in that place.

THE MYSTERY OF THE MISSING LIGHTSTICK



The K-pop group was going to perform at the Dream K Festival, but their lightstick disappeared from the STARLIGHT building just before the concert.

Each member was in a different place in the city.

SUSPECTS



RUMI

She is the leader of the group. She likes dancing. She always wants everything to be perfect.



MIRA

She is sweet and creative. She always writes songs and composes music.



ZOEY

She is fun and curious. She always wants to learn new things. She loves sweets.



GATO DERPY

He is funny and playful. He likes snacks and taking naps.



ABBY SAJA

He is very talented. Nobody knows what he is thinking.

CLUES

- Rumi was in Star Plaza practicing dance.
- Zoey was at Sweet Beat Café because she was hungry.
- Gato Derpy took a nap in Hanul Park.
- Mira was buying books and accessories at the K-Style Store.
- Abby Saja was watching a show at Dream K Theater.
- The lightstick disappeared from the STARLIGHT Building.
- The person who took it was not in the STARLIGHT Building.
- Rumi wasn't near that building when it disappeared.
- In the STARLIGHT Building there was a red bracelet on the floor.
- Only one member didn't have headphones far from the STARLIGHT Building.

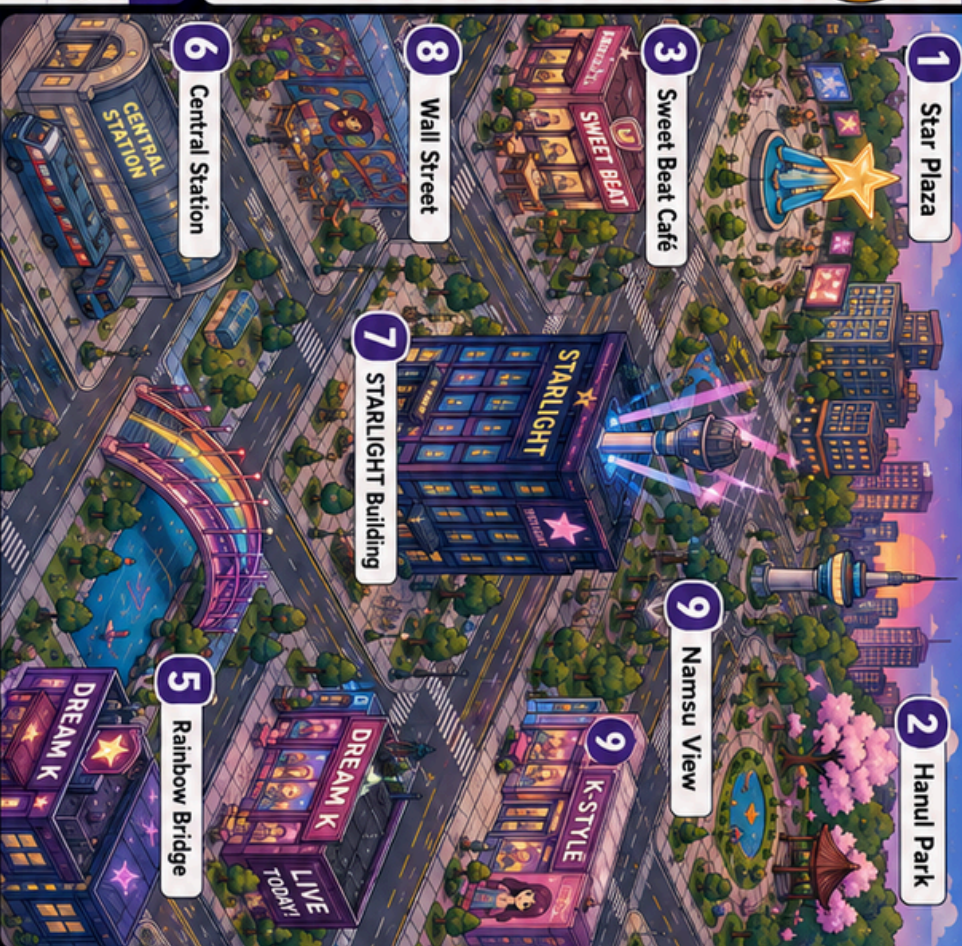


DEDUCTION TABLE

SUSPECTS	1	2	3	4	5	6	7	8	9	10
RUMI	Star Plaza	Hanul Park	Café Sweetbeat	K-Style Store	DreamK Theater	Central Station	Wall Street	STARLIGHT Building	Namsu View	Dream K Theater
MIRA										
ZOEY										
GATO DERPY										
ABBY SAJA										

Use the clues to find out where each member was and discover who hid the lightstick.

CITY MAP



WHO HID THE LIGHTSTICK?

(Write the letter and number in each box)

<input type="text"/>	<input type="text"/>	<input type="text"/>	<input type="text"/>	<input type="text"/>	<input type="text"/>	<input type="text"/>	<input type="text"/>
----------------------	----------------------	----------------------	----------------------	----------------------	----------------------	----------------------	----------------------

✓ = It can be in that location
 ✗ = It cannot be in that location

Attention, detective!
 Only one of the clues is the true opportunity to find where the lightstick is.





WHO POSTED ON SOCIAL MEDIA?

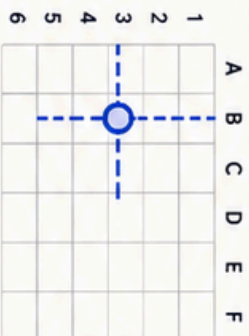
This morning, a photo from a K-pop group's general rehearsal was posted on social media without permission! Each member was in a different place in K-pop City. Use the clues to find out who posted it and where.

WHAT DID EACH ONE DO? ★

RUMI  I was practicing dance moves in the dance studio. After that, I went to the garden.	MIRA  I was recording short videos for my channel in K-Style Street. Then I went to the café.	ZOEY  I was preparing some gifts for the fans in the gift shop. Then I went to the fountain.	GATO DERPY  I was having fun and taking pictures in the park. Then I went to the kiosk.	ABBY SAJA  I was practicing singing in the recording studio. Then I went to the rehearsal room.
---	--	---	--	--

HOW TO READ THE MAP

Use the rows (numbers) and the columns (letters) to find places.
Example: B-3



CAN BE

- Path
- Bench
- Tree
- Fountain
- Lamp

CANNOT BE

- Building
- Car
- Fountain
- Kiosk



CLUES

- The photo was not posted from inside any building.
- It was not posted from the Recording Studio.
- The place is in the Fan Zone Meeting area.
- It is not in column A and it is not in column F.
- The place has a bench or a lamp next to it.
- Mira was not in the café.
- Zoey was not in the fountain.
- Gato Derpy wasn't near the kiosk.
- Abby was not in the rehearsal room.
- It was posted in the morning.
- The photo was posted near a fountain or a lamp.
- Someone saw the person sitting on a bench.



DEDUCTION TABLE

PLACE (WHERE)	RUMI	MIRA	ZOEY	GATO DERPY	ABBY SAJA
Dream Stage (A1)					
K-Style Shop (B2)					
Fountain (C2)					
Fan Zone Meeting (C3)					
Hanul Garden (B4)					
Dance Studio (E4)					
Idol Café (C5)					
Rehearsal Room (D6)					

Use the clues to find the only place where the photo was posted on social media. ★

WHO POSTED ON SOCIAL MEDIA?

Write the name of the member.

WHERE WAS IT POSTED?

Write the coordinates.
Example: B-3

 -

- ✓ = The member could be there.
- ✗ = The member could NOT be there.





WHO LOST THE SONG LETTER?



The K-pop group was practicing for their new song when the song letter disappeared! One of the members lost it in the city. Now they need your help to find out who lost the letter and where!

Who lost the letter and where did it happen?



THE MEMBERS

RUMI



Rumi was in the dance studio in the morning practicing the new dance.

Then she went to the park.

IMPORTANT

Rumi didn't go near the café or the shop.

MIRA



Mira recorded a video in the morning in K-Style Street. After that, she went to the café to buy a drink.

IMPORTANT

Mira wasn't in the park and she wasn't in the dance studio.

ZOEY



Zoey prepared some gifts for the fans in the morning. She stayed in the shop in K-Pop Street.

IMPORTANT

Zoey didn't go to the café or the dance studio.

GATO DERPY



Derpy was in the park in the morning. Then he went to watch the stars in the plaza.

IMPORTANT

Derpy wasn't in the shop and he didn't go to K-Style Street.

ABBY SAJA



Abby practiced singing in the dance studio in the morning.

After that, she went home to rest.

IMPORTANT

Abby didn't go to the plaza and she wasn't in the park.

MAP OF K-POP CITY

	A	B	C	D	E
1	Dance Studio	K-Style Street		Hanul Park	Star Plaza
2		K-POE K-Pop Shop	Café Sweet Beat		
3	Recording Studio			Tree Garden	Fan Zone Meeting

Use the clues and the map to find out who lost the letter and where!

CLUES

- The person was in a place with music.
- They were in row 2.
- The place starts with the letter "C".
- They were not in column A.
- The person was in a place to buy food or drinks.
- It wasn't the shop.
- Rumi wasn't in the same row.
- Gato Derpy wasn't in that place.
- Abby wasn't in that place.
- It happened in the morning.



DEDUCTION TABLE

PLACES (WHERE)	RUMI	MIRA	ZOEY	GATO DERPY	ABBY SAJA
Dance Studio (A1)					
K-Style Street (B1)					
Hanul Park (D1)					
Star Plaza (E1)					
K-Pop Shop (B2)					
Café Sweet Beat (C2)					
Recording Studio (A3)					
Tree Garden (D3)					
Fan Zone Meeting (E3)					

- ✓ = The member could be there.
- ✗ = The member could NOT be there.



WHO LOST THE LETTER?

Write the member's name.



WHERE DID IT HAPPEN?

Write the coordinates (Example: B2).

 -


HOW TO PLAY

- Read all the clues carefully.
- Cross out the places and members that cannot be.
- Find the place and the member that are left.
- Write your answer!





WHO HAS BEEN POSSESSED?



WHAT HAPPENED?

During a K-pop concert, something strange happened... One of the members has been possessed!

Your mission is to find out who and where it started.



The K-pop group was getting ready for the big concert when something strange happened.

Suddenly, one of the members started acting in a very strange way. They forgot the steps, couldn't speak well and didn't hear the music. Now they think a spirit from K-pop City has possessed one of them.

Who has been possessed and where did it start?

THE MEMBERS

RUMI



Rumi was checking the sound on stage and practicing some dance moves. After that, she went to the gardens.

IMPORTANT

Rumi was never near the trees or the big screens.

MIRA



Mira was recording content for her channel in a street full of lights and posters. Then she went to a shop to buy some cards and stickers.

IMPORTANT

Mira was near the shop and the dressing rooms, but not near the stage.

ZOEY



Zoey was preparing a surprise for her fans with gifts and cards. She saw some fans, but she didn't talk to anyone because she was very busy.

IMPORTANT

Zoey was in a decorated area, but she wasn't in the same row as the main stage.

GATO DERPY



Derpy was sleeping under a tree and then he went to look for shadows and leaves.

IMPORTANT

Derpy was in a quiet area with trees, flowers and nothing very loud.

ABBY SAJA



Abby was practicing a new dance in the training room in front of the big mirrors.

IMPORTANT

During those minutes nobody heard a loud sound. He was very focused on his steps.

K-POP CITY MAP

	A	B	C	D	E
1		Dream Stage	K-Pop Street		
2		Recording Studio		Hanul Park	Star Plaza
3	Dance Studio			Tree Garden	Fan Zone Meeting

Each member was in one of these places. Use the map and the clues to find out who has been possessed.

CLUES

- The person was in a place with music or noises.
- They were not in row 1.
- The place starts with the letter 'T'.
- They were not in the same column as the Recording Studio.
- The person was in a place with a garden.
- Rumi was not in a place with trees or flowers.
- Mira was in a place with lights and posters, but not near the stage.
- Zoey was in a decorated area, but not in the main stage row.
- Gato Derpy was in a quiet place without music or dancing.
- The person was in front of mirrors.
- Someone saw the person looking strange and moving very slowly.
- It all started between Tree Garden and Dream Stage.

DEDUCTION TABLE

PLACE					
Dream Stage (B1)	RUMI	MIRA	ZOEY	GATO DERPY	ABBY SAJA
K-Pop Street (C1)					
Recording Studio (B2)					
Hanul Park (D2)					
Star Plaza (E2)					
Dance Studio (A3)					
Tree Garden (D3)					
Fan Zone Meeting (E3)					

Cross ✓ if the member could be there. Cross ✗ if they could NOT be there.

WHO HAS BEEN POSSESSED?

Write the member's name.

WHERE DID IT START?

Write the coordinates (Example: A1)

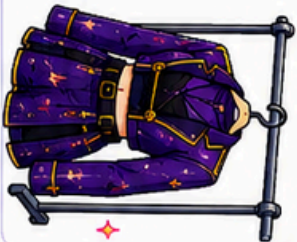
 - 

THE MYSTERY OF RUMI'S COSTUME

The K-pop group was getting ready for the big concert.

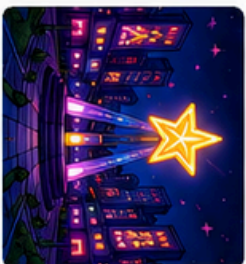
But Rumi's favorite costume disappeared in the dressing room before the show!

Only one person could take it.
Who took it?



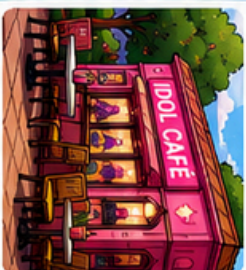
PLACES IN THE CITY

1 Star Plaza



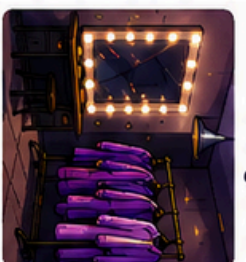
A plaza with big lights and a stage in the center.

2 Idol Café



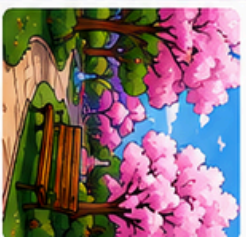
A popular café where idols meet fans and eat sweets.

3 Dream Stage Dressing Room



The dressing room where the group changes clothes.

4 Hanul Park



A peaceful park with trees, flowers and walking paths.

5 K-POP Records Store

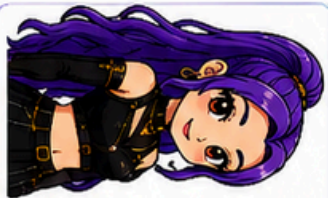


A music store where you can buy CDs, posters and more.

WHAT DID EACH ONE DO?

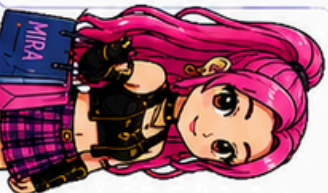
RUMI

I was practicing dance moves in the dance studio in the afternoon. Then I left my costume in the dressing room.



MIRA

I spent the afternoon in the music store looking at albums, posters and accessories. I bought some new albums.



ZOEY

I was very hungry, so I went to Idol Café in the afternoon for a big dessert. Then I stayed there to study.



GATO DERRY

I was bored, so I went to Hanul Park. I ran, hid behind trees, and played with some leaves.



ABBY SAJA

I was practicing singing with some moves and new steps. I helped Rumi and we practiced together.



CLUES

- The costume was not in Star Plaza.
- The person was not in the dressing room.
- It was not in the park.
- It was not in the music store.
- The person was in the café.
- It was in the afternoon.
- Rumi was in the dance studio.
- Mira bought new albums.
- Abby was practicing with Rumi.
- Gato Derry doesn't like cafés.



DEDUCTION TABLE

Use the clues to mark ✓ if the person was in that place or ✗ if they were not. Then discover who took the costume!

PERSON	Star Plaza	Idol Café	Dream Stage Dressing Room	Hanul Park	K-POP Records Store
RUMI					
MIRA					
ZOEY					
GATO DERRY					
ABBY SAJA					

WHO TOOK RUMI'S COSTUME?

After completing the table, who do you think took Rumi's costume?

Culprit:





THE MYSTERY OF THE GOLDEN MICROPHONE



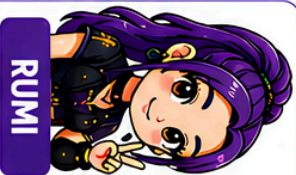
The K-pop group was going to record a special concert, but the golden microphone disappeared just before they started!

Each member was in a different place in the city.

Who took it?

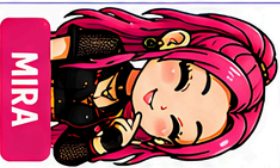


MEMBERS



RUMI

I was practicing dance in the dance studio.



MIRA

I was in the music store looking at albums and posters.



ZOEY

I was in the café in the afternoon eating a dessert.



GATO DERPY

I was in the park, playing with leaves and flowers.



ABBY SAJA

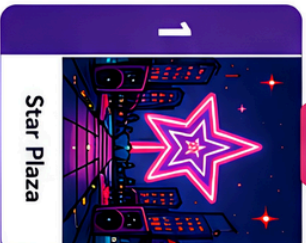
I was in the recording studio practicing singing.

CLUES

- The microphone disappeared in the Dream Sound Studio.
- The person who took it was in Dream Sound Studio.
- Rumi was in Star Plaza.
- Zoey was in a place with food.
- Gato Derpy was in a quiet place with trees and flowers.
- Abby Saja was not in the studio and not in the café.
- Mira was not in the park or in the café.
- In the café, someone lost some sunglasses.
- The guilty person was in the center of the map.
- Only one member didn't have headphones in her place.

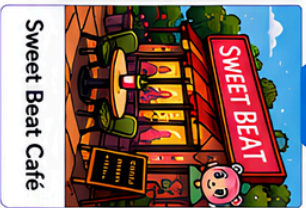


CITY MAP



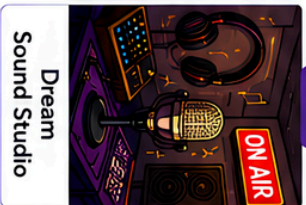
A

Star Plaza



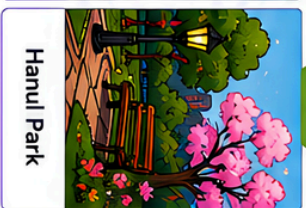
B

Sweet Beat Café



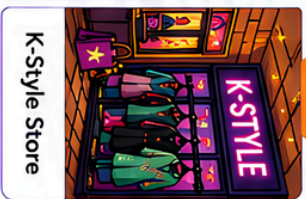
C

Dream Sound Studio



D

Hanul Park



E

K-Style Store

DEDUCTION TABLE



	A1	B1	C1	D1	E1
RUMI					
MIRA					
ZOEY					
GATO DERPY					
ABBY SAJA					

CHARACTER INFO



RUMI

"I was practicing dance with a lot of lights."



ZOEY

"I was eating something because I was very hungry."



ABBY SAJA

"I was practicing for a special concert."



MIRA

"I was not near food or flowers."



GATO DERPY

"I spent the afternoon outside among trees."



WHO TOOK THE GOLDEN MICROPHONE?

THE CULPRIT IS:



